

# Winter Flounder Specifications



February 5, 2019

# Current Mgmt. Measures



Stock	Sector	Trip Limit	Size Limit	Season	Gear
<b>GOM</b>	<b>Com</b>	500 lbs	12"	Maintain closures	Min 6.5" square or diamond mesh
	<b>Rec</b>	8 fish	12"	NA	
<b>SNE/MA</b>	<b>Com</b>	50 lbs	12"	Maintain closures	Min 6.5" square or diamond mesh
	<b>Rec</b>	2 fish	12"	March 1 – December 31	

# Measures Board Can Adjust



Under Addendum III, the Board can adjust the following measures through Board action

## Commercial Measures

- Size Limit
- Season
- Area Closures
- Trip Limit
- Trigger Trip Limit

## Recreational Measures

- Size Limit
- Bag Limit
- Season

# FY17 GOM Catch Estimates



GOM		FY17 ACL (mt)	FY17 Total Catch (mt)	FY17 % Caught
	Total	776	308.1	39.7%
	Sector	607	110	18.3%
	Common Pool	32	2.8	8.9%
	State Waters Sub- Component	122	185.3	151.9%

# FY17 GOM Catch Estimates



GOM		FY17 ACL (mt)	FY17 Total Catch (mt)	FY17 % Caught
	Total	776	308.1	39.7%
	Sector	607	110	18.3%
	Common Pool	32	2.8	8.9%
	State Waters Sub- Component	122	185.3	151.9%

Note: 2018-2020 total ACL is 428 mt and the state waters sub-component is 67 mt.

# FY17 SNE/MA Catch Estimates



		FY17 ACL (mt)	FY17 Total Catch (mt)	FY17 % Caught
SNE/ MA	Total	749	550.5	73.5%
	Sector	515	372	72.2%
	Common Pool	70	37.2	53%
	State Waters Sub- Component	70	23.2	33.2%

Note: 2018-2020 total ACL is 700 mt and the state waters sub-component is 73 mt.



# Questions

# Winter Flounder 2019 FMP Review



February 5, 2019

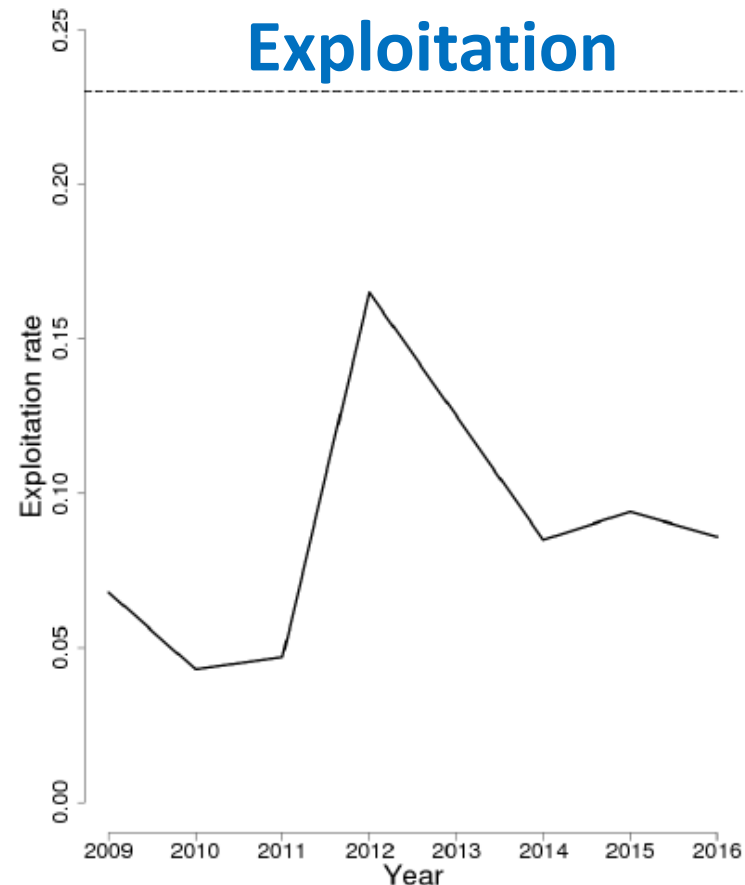
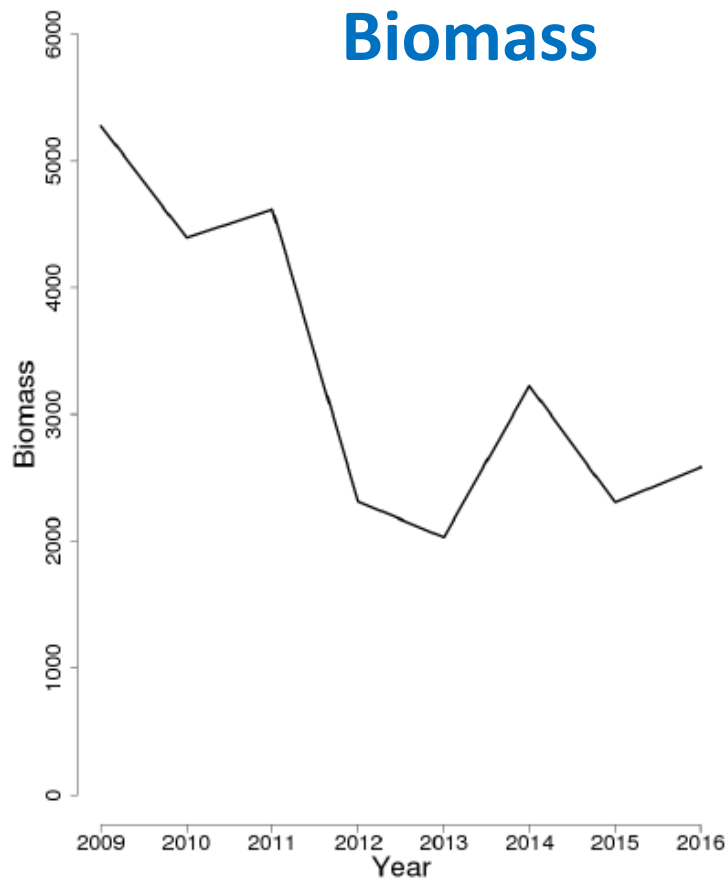


# Status of Stocks - GOM



## 2017 Operational Stock Assessments

- Stock biomass status unknown
- Overfishing is not occurring

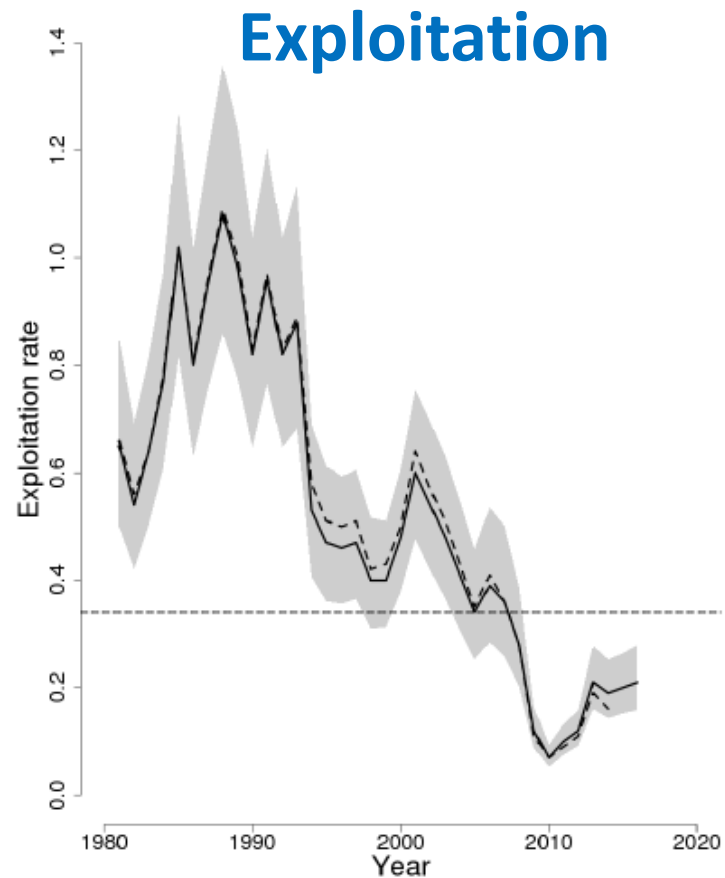
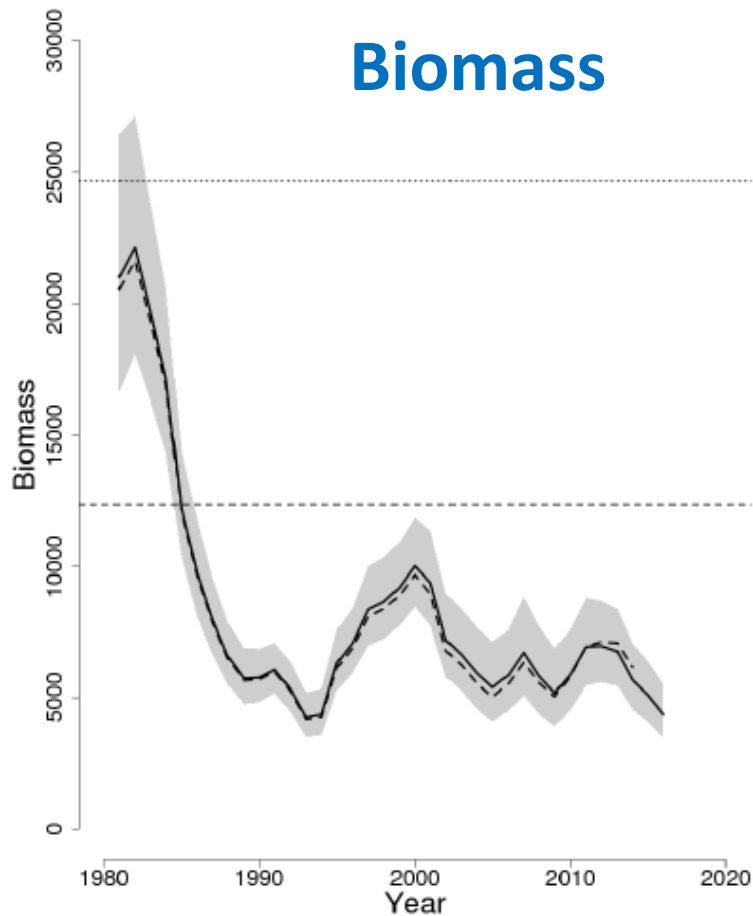


# Status of Stocks – SNE/MA



## 2017 Operational Stock Assessments

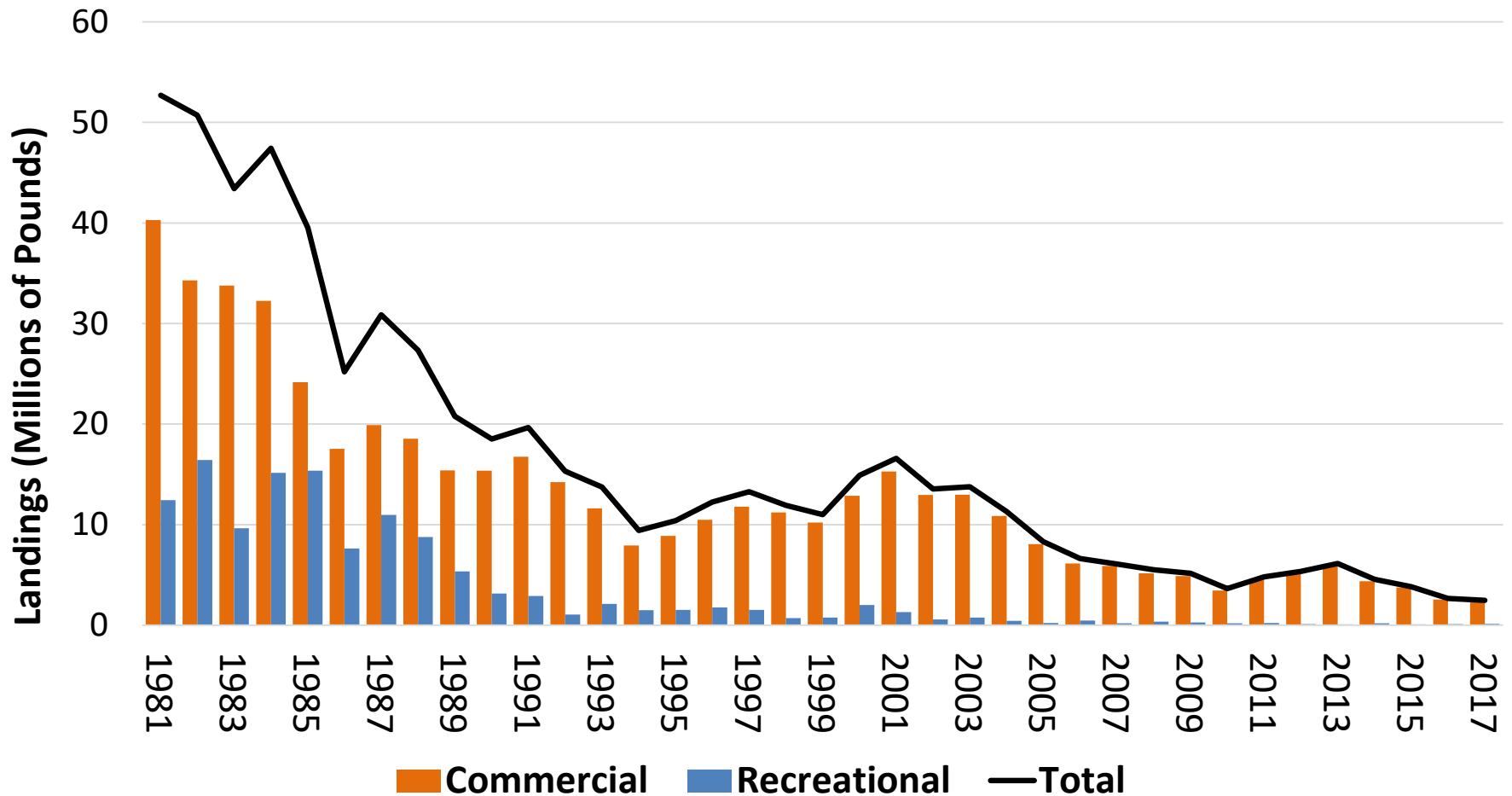
- Stock is overfished
- Overfishing is not occurring



# Status of Fishery







## Commercial and Recreational Winter Flounder Landings (1981-2017)



# Status of Management



Stock	Sector	Trip Limit	Size Limit	Season
<b>GOM</b>	<b>Com</b>	500 lbs	12"	Maintain closures
	<b>Rec</b>	8 fish	12"	NA
<b>SNE/MA</b>	<b>Com</b>	50 lbs	12"	Maintain closures
	<b>Rec</b>	2 fish	12"	March 1 – December 31

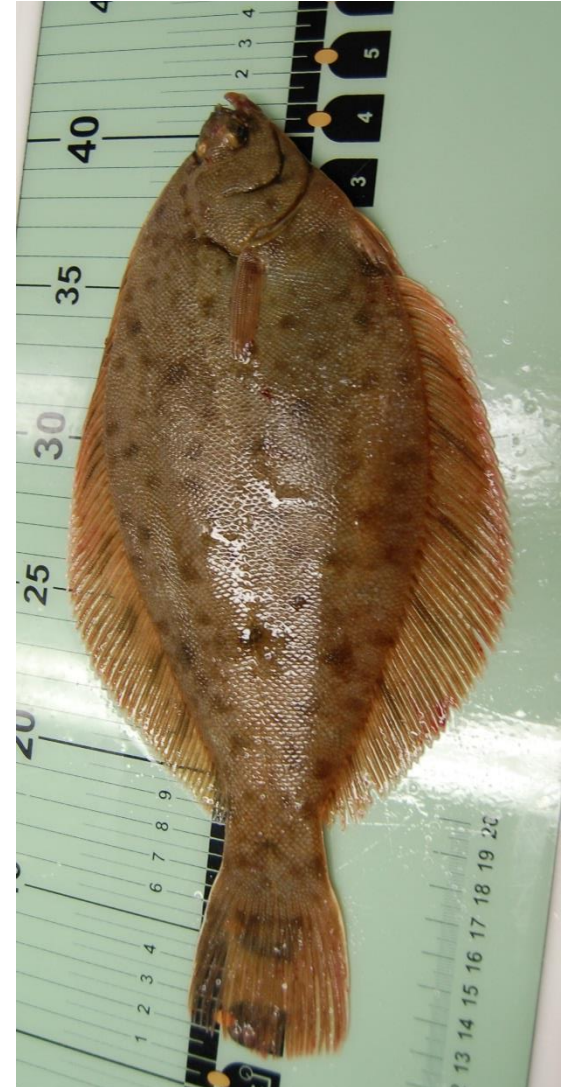
-  Amendment 1
-  Addendum I
-  Addendum II
-  Board Action on February 2014

# Monitoring & Research



Plan-specific requirements:

- Annual juvenile recruitment survey
  - ✓ MA, NY, and RI
- Annual Spawning stock biomass survey
  - ✓ MA, RI, CT, and NJ



# State Compliance



- ✓ States' management programs are consistent with the FMP
- ✓ There were no requests for *de minimis* status
- ✓ PRT recommends the Board “approve the 2019 FMP Review and state compliance reports”