

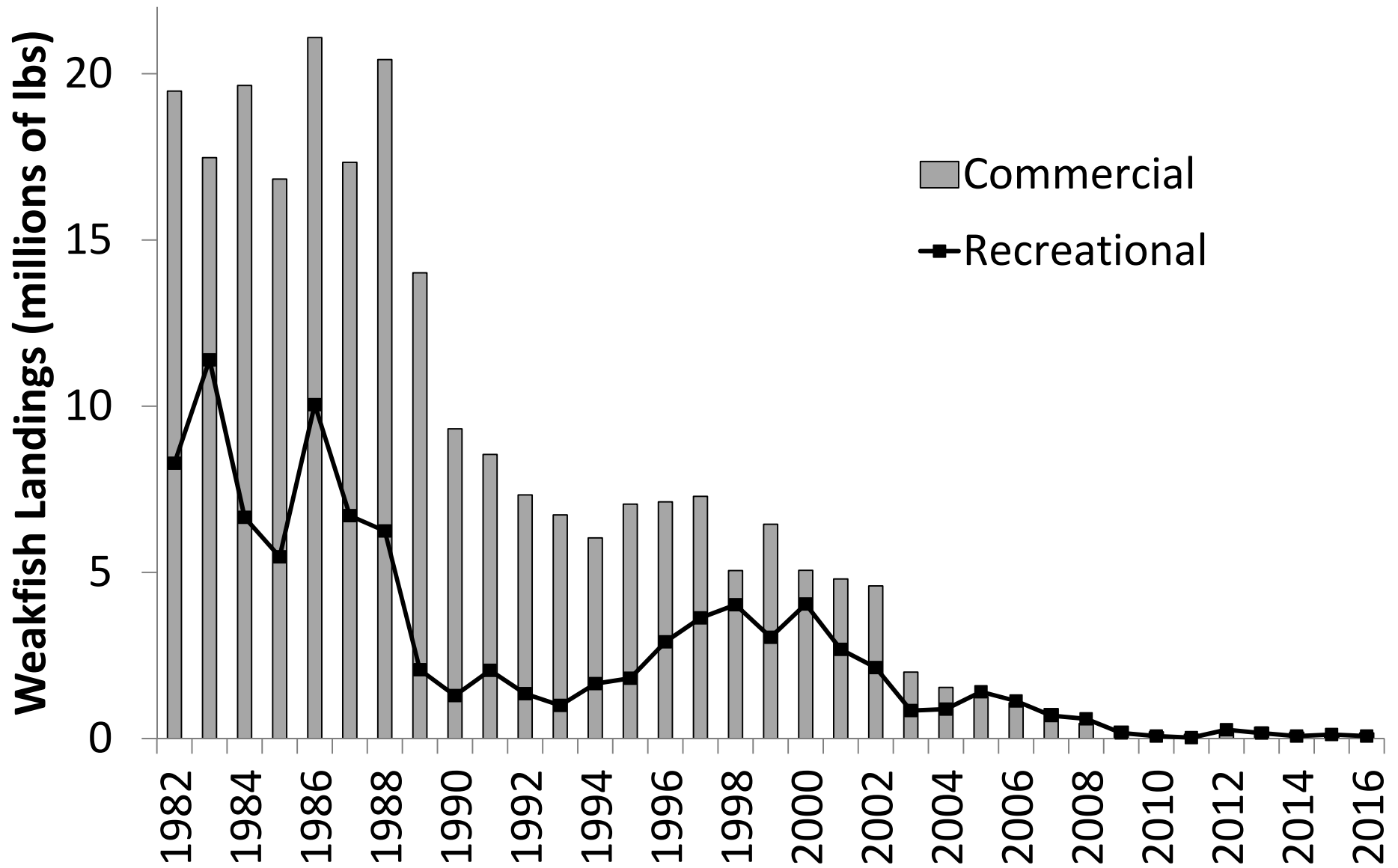


Weakfish 2017 FMP Review

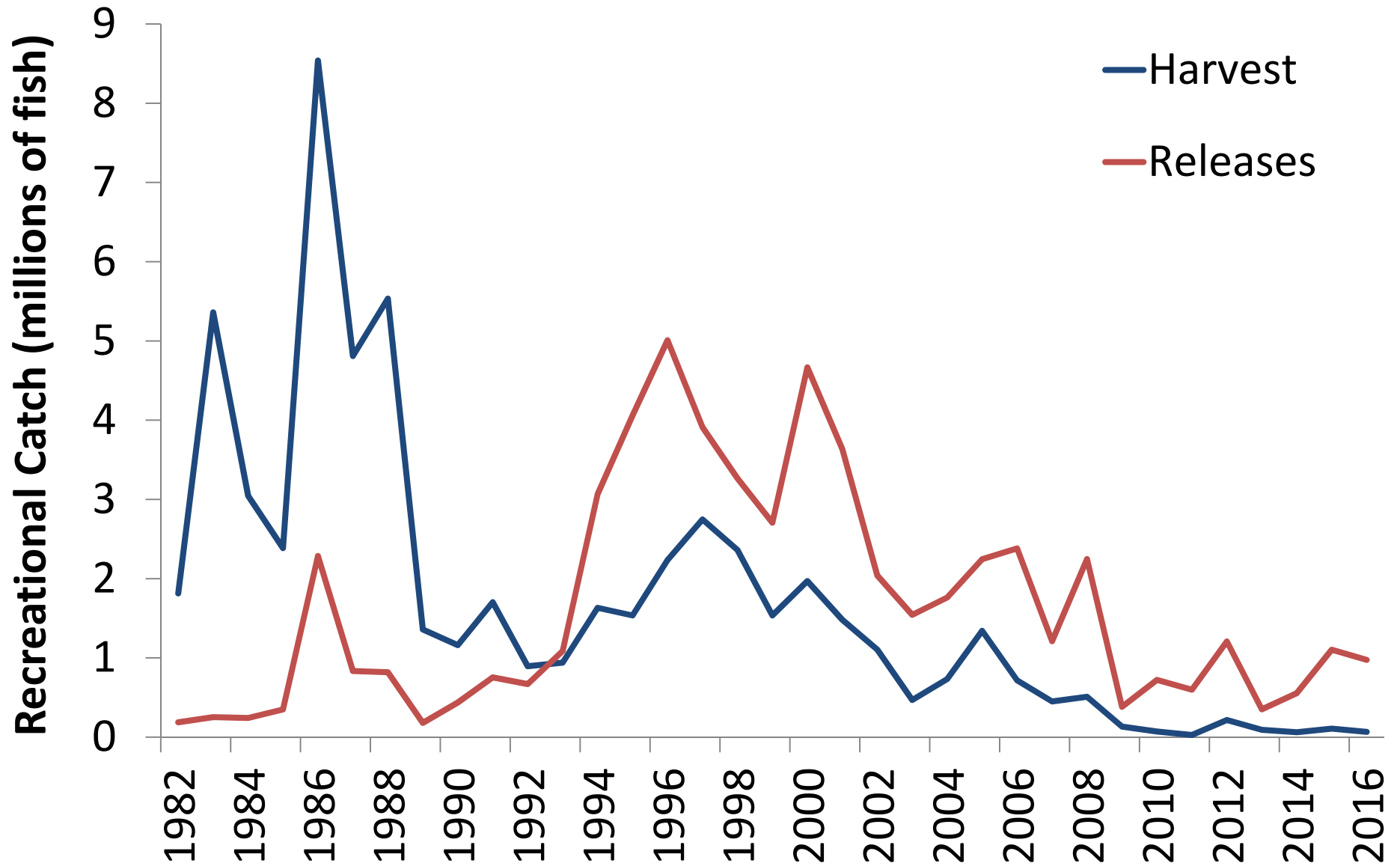


Presented to Weakfish Management Board
February 7, 2018

Status of the Fishery



Status of the Fishery



Biological Sampling



	Samples Required		Samples Completed		Fisheries Sampled
	Ages	Lengths	Ages	Lengths	
MA*			0		NA
RI	9	17	3	232	commercial, RIDFW Trawl Survey
CT*			0	0	NA
NY	35	66	61	61	commercial (GN, TR, PN, H&L)
NJ	43	26	76	80	NJ Ocean Trawl Survey/ research surveys
DE	2	4	48	49	commercial (GN)
MD	4	4	63	64	commercial (PN)
PRFC	0	0	0	0	NA
VA	33	49	284	284	commercial (GN, PN, HS)
NC	178	218	570	2,664	commercial (SN, GN, PN, HS, TR, H&L), recreational
SC	55	0	174	379	fishery independent, recreational
GA*			0	0	NA
FL*			0	0	NA

* = *de minimis* state

Management Triggers



	MA	RI	CT	NY	NJ	DE	MD
2012-2016	1,380	17,098	4,330	62,085	67,836	4,774	4,754
2016	1,492	12,022	5,958	30,643	13,347	6,060	1,238
% change	8%	-30%	38%	-51%	-80%	27%	-74%

	PRFC	VA	NC	SC	GA	FL
2012-2016	27	45,234	133,844	16,056	1,933	1,621
2016	0	50,951	114,500	8,931	1,001	1,274
% change	-100%	13%	-14%	-44%	-48%	-21%

Status of Management



- Amendment 4 (2002)
 - Established biological reference points
 - States required to implement rec and com management measures to achieve F target
- Addendum I (2005)
 - Biological sampling program
- Addendum II (2007)
 - 6 fish bag limit and 150 lb bycatch allowance
 - Management triggers
- Addendum III (2007)
 - Modified BRD certification language
- Addendum IV (2009)
 - 1 fish bag limit, 100 lb trip limit, 100 lb bycatch limit, 100 undersized fish per trip allowance
 - SSB30% target and SSB20% threshold

Status of the Stock



- 2016 Stock Assessment
 - Stock is depleted
 - Overfishing is not occurring
 - F is stable and modest
 - M remains high
 - Low Z from 2011-2014 corresponds to small increase in SSB
- Next assessment: 2019 (update)

State Compliance



- All states are in compliance with Amendment 4 and Addendum I-IV
- De Minimis
 - 2 year average, combined rec and com, 1%
 - Requests: FL, GA, CT, and MA
 - CT landings are 1.46% of coastwide total

Recommendations



Management

- The PRT recommends the Board approve the 2017 Weakfish FMP Review, state compliance reports, and de minimis status for FL, GA, CT, and MA
- The PRT recommends that the Board clarify the use of fishery-independent samples in fulfilling biological sampling requirements of Addendum I to Amendment 4.

Biological Sampling Requirements



- Add I to Amendment 4 to the ISFMP for Weakfish
- **“The weakfish stock assessment requires biological data collected from samples of recreational and commercial catch.”** (Add I)
- *Non-de minimis* Requirements:
 - Maintain 2005 level of rec sampling of individual lengths through MRFSS/MRIP
 - 6 lengths for each commercial mt
 - 3 ages for each total mt (max of 1000 per state); **“Samples may come from commercial and/or recreational fishery as long as they come from the same general area (inshore versus offshore) that those fisheries are prosecuted in.”** (Add I)