



Draft Amendment I Management Options for Board Review

Tautog Management Board

May 2017

Draft Amendment 1 Timeline

2015	Feb	2015 Stock Assessment Update (3 Regions)
	Sept	Board Solicits Public Comment on PID
	Nov	Tasks PDT to Develop Draft Amendment I
2016	May	Tasks TC to Develop a Regional Assessment for LIS & NJ-NYB
	August	Board Reviews Regional Assessment and Tasks TC to Develop a 2016 Stock Assessment Update
2017	Feb	Board Tasks TC and PDT to Develop Regional Management Measures
	May	Board Reviews TC Tasks and Draft Amendment 1; considers approving the document for public comment
	June/ July	Board Solicits Public Comment on Draft Amendment 1 and States Conduct Public Hearings
	August	Consider Final Approval of Amendment I

Options Overview



SECTION 2.0

1. Goals
2. Objectives
3. Biological Reference Points
4. Fishing Mortality Target
5. Probability of Achieving F Target
6. F Reduction Schedule
7. Stock Rebuilding Schedule

Issue/Option Overview



SECTION 4.0

8. Regional Boundaries (4 regions)

9. Long Island Sound Boundaries

- Law Enforcement Committee feedback after the presentation

10. Massachusetts – Rhode Island

- Recreational Management Measures

Issue/Option Overview



SECTION 4.0

Long Island Sound

11. Recreational Measures

- 50% Probability of Achieving F Target
- 70% Probability of Achieving F Target

12. Commercial Measures

- 50% Probability of Achieving F Target
- 70% Probability of Achieving F Target

13. Slot Limit for Recreational and Commercial

Issue/Option Overview



SECTION 4.0

New Jersey – New York Bight

14. Recreational Measures

- 50% Probability of Achieving F Target
- 70% Probability of Achieving F Target

15. Commercial Measures

- 50% Probability of Achieving F Target
- 70% Probability of Achieving F Target

Issue/Option Overview



SECTION 4.0

Delaware – Maryland – Virginia

16. Recreational Measures

17. Commercial Measures

Issue/Option Overview



SECTION 4.0

18. Commercial Quota

19. Commercial Harvest Tagging Program

20. Tag Application

21. Spawning Closures

22. Management Program Equivalency



SECTION 2.0

1. Goals (pg 48-49)

Option A. Maintain the 1996 Goals (A – E)

Option B. Revised Goal Statement

The goal of Amendment 1 is to sustainably manage tautog over the long-term using regional differences in biology and fishery characteristics as the basis for management. Additionally, the Amendment seeks to promote the conservation and enhancement of structured habitat to meet the needs of all stages of tautog's life cycle.

2. Objectives (pg 49-51)

Option A. Maintain the 1996 Objectives (A – J)

Options B – G. Suggest modifying or removing select objectives

Option H. This option will insert all modifications identified under Options B – G. See pg. 51 for revised objectives; summary below:

- F and SSB Targets
- Regional management
- EEZ management
- Habitat
- Monitoring
- Illegal harvest

3. Biological Reference Points (pg. 53-54)

Option A. Status Quo - Reference Points can be Modified via a Management Document

Option B. Reference Points can be Modified via Board Action (i.e., Management Document Not Required)

The TC or SAS can recommend alternative reference points, as long as modifications to the status determination criteria, and their associated values, are the result of the most recent peer-reviewed stock assessments for tautog. In response, the Board may allow for the incorporation of new, peer-reviewed stock status determination criteria, when available, through Board action (at a Board Meeting).

4. F Mortality Target (pg. 54-55)

Option A. Status Quo

Coastwide fishing mortality cannot exceed $F_{\text{target}}=0.15$

Option B. Managing to the Regional Target F

If the current F exceeds the regional threshold level (overfishing), the Board must take corrective action, via a management document, within X year of receiving the overfishing stock status.

Sub-Option B1: No time requirement

Sub-Option B2: Board action within one year

Sub-Option B3: Board action within two years

5. Probability of Achieving F Target (pg. 55)

Option A. Status Quo.

The Board will select the probability of achieving F Target when modified management measures are necessary.

Option B. 50% Probability of Achieving F Target

Management measures will be developed based on at least a 50% probability of achieving F Target.

Option C. 70% Probability of Achieving F Target

Management measures will be developed based on at least a 70% probability of achieving F Target.

6. F Reduction Schedule (pg. 55-56)

Option A. Status Quo

The time frame will be established when the Board initiates a harvest reduction management response.

Option B. Three Years

Fishing mortality will be reduced to the regional target F level in a time frame that is no longer than 3 years.

Option C. Five Years

Fishing mortality will be reduced to the regional target F level in a time frame that is no longer than 5 years.

7. Stock Rebuilding Schedule (pg. 56)

Option A. Status Quo (from Addendum IV)

No required management responses if SSB is below the threshold level.

Option B. A Stock Rebuilding Schedule can be Developed via an Addendum

The Board can initiate a regional SSB rebuilding plan via an addendum.

Option C. A Stock Rebuilding Schedule can be Developed via an Addendum, Not to Exceed 10 Years



End of Section 2.0

QUESTIONS



SECTION 4.0

8. Regional Management (pg. 65-66)

Option A. Status Quo – Coastwide Management

Option B. Regional Management

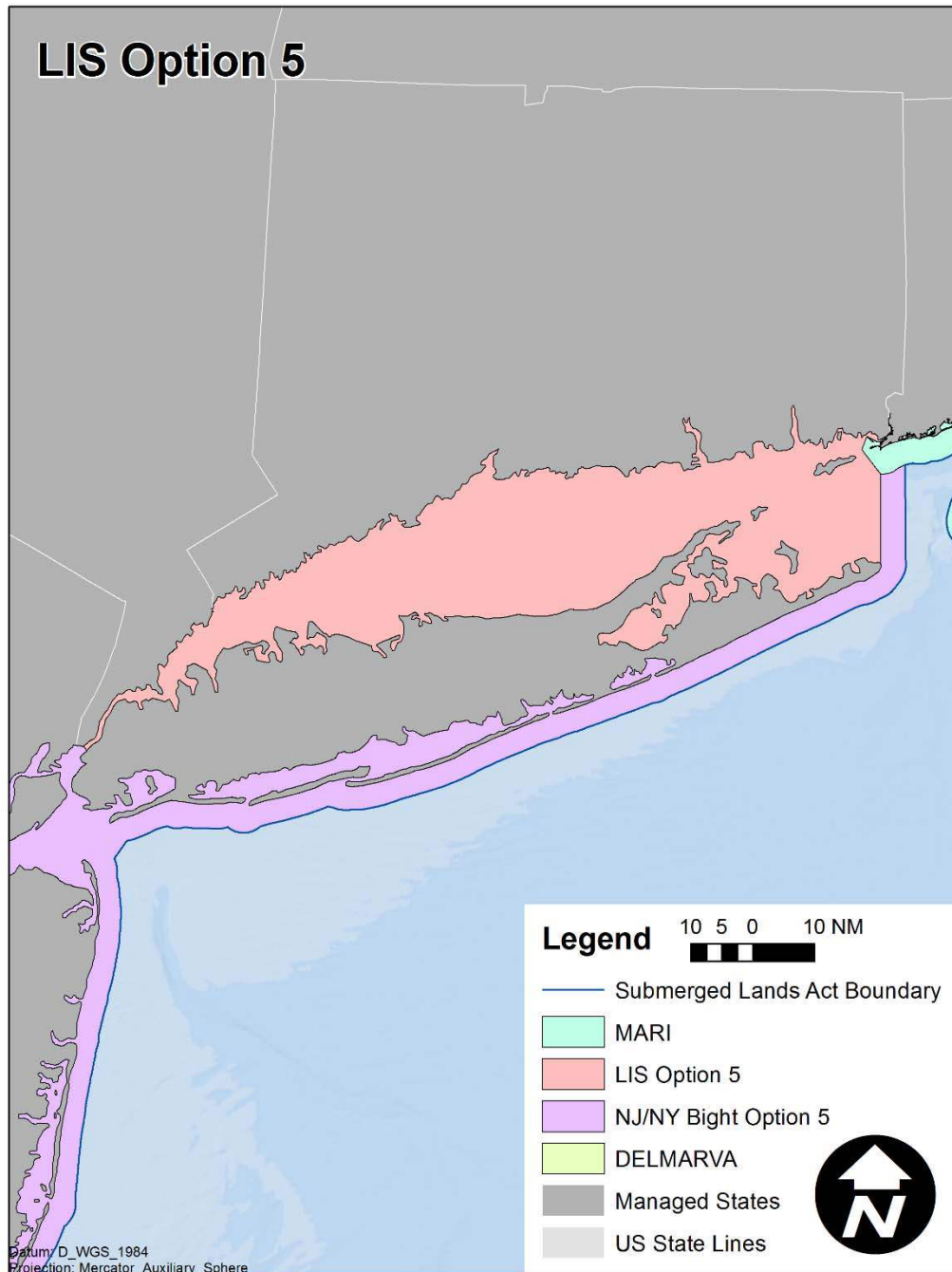
The TC can recommend alternative regional boundaries as more data become available. In response, the Board may adjust the regional boundaries via a management document.

1) Massachusetts – Rhode Island

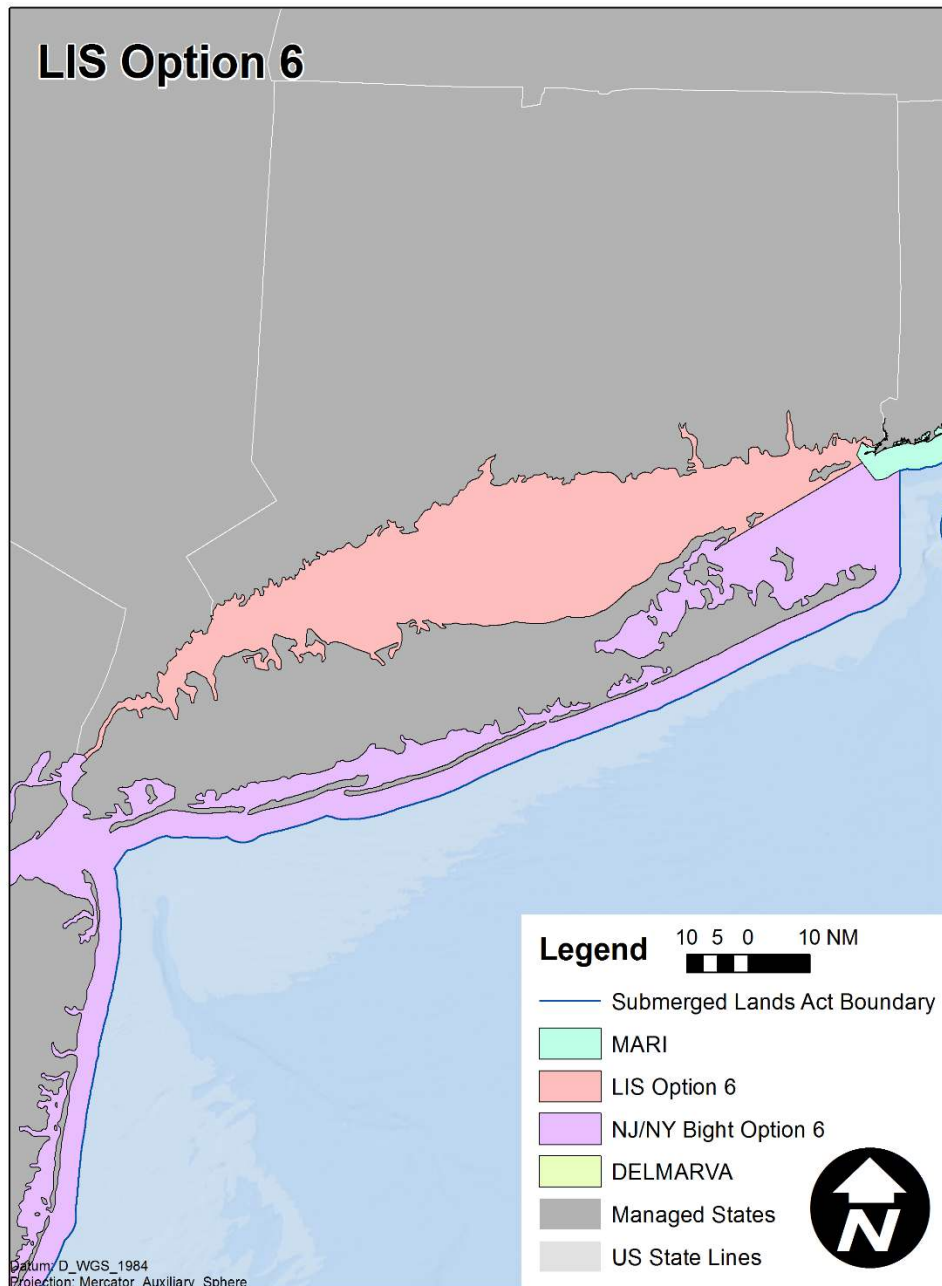
2) Long Island Sound (*CT and NY LIS*)

3) New Jersey – New York Bight (*NJ and NY South Shore*)

4) Delaware – Maryland – Virginia



Sub-Option B1: (pg. 69) Long Island Sound is delineated by a line that runs from **Montauk Point, New York to Watch Hill, Rhode Island**. All waters west of the line will follow the Long Island Sound management measures. The MRIP data that was used to evaluate the LIS stock status is aligned with this option.



Sub-Option B2: (pg. 69)
Long Island Sound is delineated by a line that runs from **Orient Point, New York to Watch Hill, Rhode Island**. All waters west of the line will follow the Long Island Sound management measures.



REGIONAL MANAGEMENT OPTIONS

Management Option Structure



1. **Overfishing is occurring in LIS and NJ-NYB:**

- Recreational
 - Options w/ a 50% Probability of Achieving F Target
 - Options w/ a 70% Probability of Achieving F Target
- Commercial
 - Options w/ a 50% Probability of Achieving F Target
 - Options w/ a 70% Probability of Achieving F Target

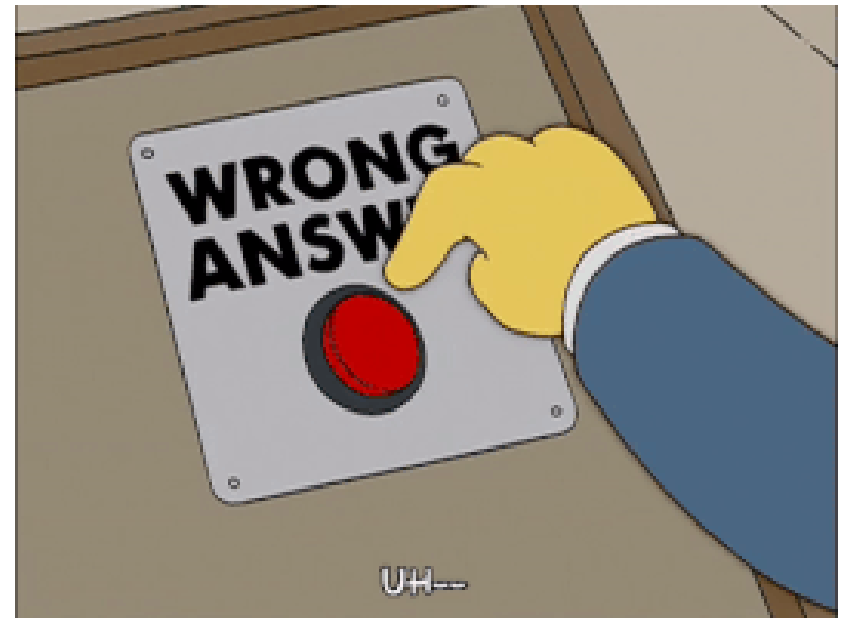
2. **Overfishing is not occurring in MARI or DelMarVa;**
however the regions are proposing recreational regional management options.

LIS & NJ-NYB



When selecting management options, the same level of risk needs to be applied to the recreational and commercial fisheries. For example:

- Recreational
 - Option A (50% probability)
 - Option B (70% probability)
- Commercial
 - Option A (50% probability)
 - Option B (70% probability)



LIS & NJ-NYB



When selecting management options, the same level of risk needs to be applied to the recreational and commercial fisheries. For example:

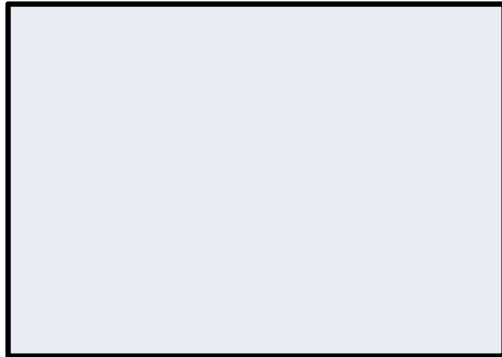
- Recreational
 - Option A (50% probability)
 - Option B (70% probability)
- Commercial
 - Option A (50% probability)
 - Option B (70% probability)





METHODOLOGY

Legend



No fishing / closed season



Open season

1. Massachusetts-Rhode Island

No reductions needed, but options to create consistent regulations across the region are presented.

1. Massachusetts-Rhode Island

RECREATIONAL OPTIONS

Options	Min. Size	Possession Limit	Open Season	% Harvest Reduction
A. Status Quo	16"	Current Mgt. Measures		NA
B. All Measures Consistent	16"	3	Mar 1 - May 31; Aug 1 - Oct 14	9%
		4	Oct 15 - Dec 31	
C. All measures consistent	16"	3	Mar 1 - May 31; Aug 1 – Dec 31	19%

1. Massachusetts – Rhode Island

RECREATIONAL – same options as previous slide

		Size	Jan	Feb	Mar	Apr	May	Jun	Jul	Aug	Sep	Oct	Nov	Dec
A.	MA	16"	3											
	RI	16"					3					6		

B.	MA	16"			3							4		
	RI	16"			3							4		

C.	MA	16"			3									
	RI	16"			3									

Options B and C include proposed spawning closures in June and July

2. Long Island Sound

Overfishing is occurring, and a 47.2% – 52.6% harvest reduction is required.

2. Long Island Sound

RECREATIONAL – state-specific reductions to current measures

Options	State	Min. Size	Possession Limit	Open Season	% Harvest Reduction
A1. Status Quo with Reduction (50%)	CT	17"	1	Apr. 1-30, Aug. 1-31	48.1%
			2	Oct 10-Nov 30	
	NY	16"	1	Oct. 5-Dec. 14	49.5%
A2. Status Quo with Reduction (70%)	CT	16"	1	Apr 1-30, Aug 1-31, Oct. 10-Dec. 6	53%
	NY	16.5"		Oct. 5-Dec. 14	

2. Long Island Sound

COMMERCIAL – state-specific reductions to current measures

Options	State	Min. Size	Possession Limit	Open Season	% Harvest Reduction
A1. Status Quo with Reduction (50%)	CT	16"	10	Apr. 1-30, Aug. 1-31, Oct. 21-Dec. 4	47.3%
	NY	15"	25	Jan. 1-Feb. 28, Apr. 1-30, Aug. 1-Dec. 31	51.3%
A2. Status Quo with Reduction (70%)	CT	16"	10	Apr. 1-30, Aug. 1-31, Oct. 21-Nov. 18	52.8%
		15"	25	Jan. 1-Feb. 28, Aug. 1-Dec. 31	52.9%

2. Long Island Sound

COMMERCIAL – includes regional components to each option

		Quota/ Bag	Jan	Feb	Mar	Apr	May	Jun	Jul	Aug	Sept	Oct	Nov	Dec
50%	B1. 16" Minimum size, commercial quota													
	CT	2,785 lbs	■	■	■	■	■	■	■	■	■	■	■	■
	NY	39,021 lbs	■	■	■	■	■	■	■	■	■	■	■	■
70%	B2. 16" Minimum size, status quo bag limit													
	CT	10 fish	■	■	■	■	■	■	■	■	■	■	■	■
	NY	25 fish	■	■	■	■	■	■	■	■	■	■	■	■
	B3. 16" Minimum size, commercial quota													
	CT	2,500 lbs	■	■	■	■	■	■	■	■	■	■	■	■
NY	35,030 lbs	■	■	■	■	■	■	■	■	■	■	■	■	

2. Long Island Sound

RECREATIONAL & COMMERCIAL SLOT LIMIT: 16 – 18 “

		Seasons											
		Jan	Feb	Mar	Apr	May	Jun	Jul	Aug	Sep	Oct	Nov	Dec
C.	CT				2							4	
	NY										4		

		Possession Limits	
C.	CT	Recreational	See table
		Commercial	10 fish
	NY	Recreational	4 fish
		Commercial	25 fish

Proposed spawning closures are from May through July for the recreational and commercial fisheries in LIS

3. New Jersey – New York Bight

Overfishing is occurring, and a 2% – 11% harvest reduction is required.

3. New Jersey – New York Bight

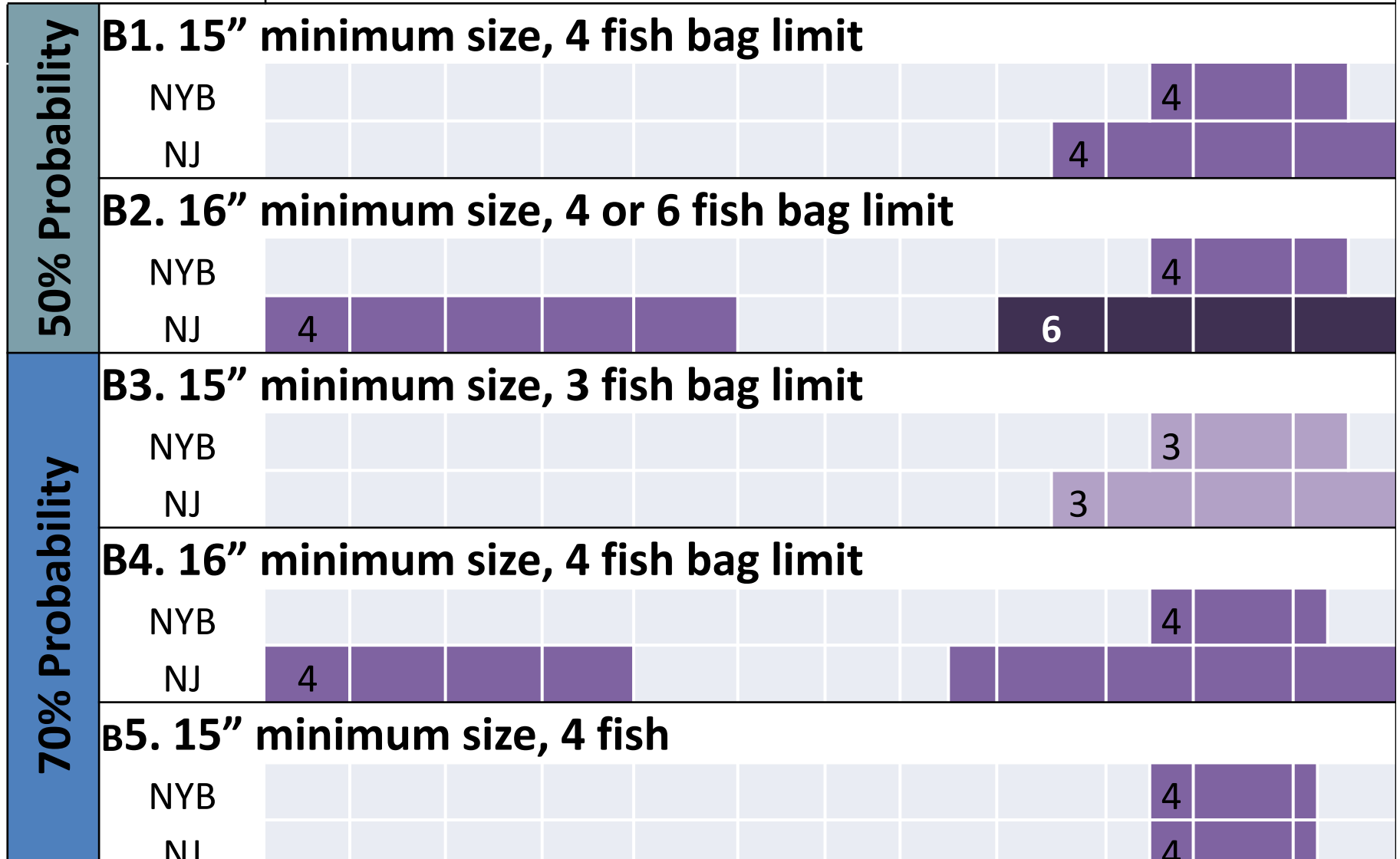
RECREATIONAL – state-specific reductions to current measures

Option	State	Min. Size	Possession Limit	Open Season	% Harvest Reduction
A1. Status Quo w/ Reduction (50%)	NYB	16"	4	Oct 6 - Dec 13	2%
	NJ	15"	4	Jan 1 – Feb 28	
			4	Apr 1 - 18	
			1	Aug 21 – Nov 15	
			6	Nov 16 – Dec 31	
A2. Status Quo w/ Reduction (70%)	NYB	16"	4	Oct 16 - Dec 14	11%
	NJ	15"	4	Jan 1 – Feb 28	
			1	Oct 2 – Nov 15	
			6	Nov 16 – Dec 31	

3. New Jersey – New York Bight

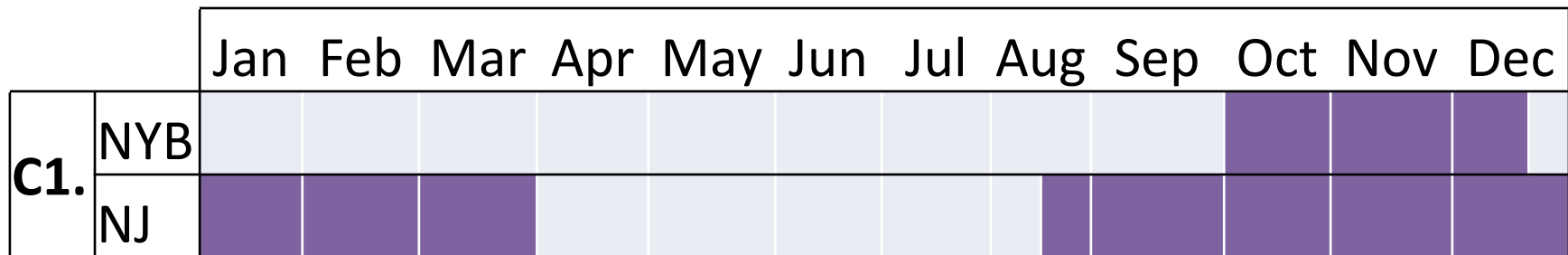
Jan Feb Mar Apr May Jun Jul Aug Sept Oct Nov Dec

RECREATIONAL



3. New Jersey – New York Bight

RECREATIONAL SLOT LIMIT: 15 – 18”, 4 fish bag limit



Proposed spawning closures are from June through July for the recreational and commercial fisheries

3. New Jersey – New York Bight

COMMERCIAL – state-specific reductions to current measures

Option	State	Min. Size	Possession Limit	Open Season	% Harvest Reduction
A1. Status Quo (50%)	NYB	15"	25	Jan 1 - Feb 28; Apr 14 - Dec 31	2%
	NJ		-	Jan 1 - 15; Jun 11 - 30; Nov 12 - Dec 31	
A2. Status Quo (70%)	NYB	15"	25	Jan 1 - Feb 28; May 10 - Dec 31	11%
	NJ		-	Jan 9 -15; June 13 - 30; Nov 15 - Dec 31	

3. New Jersey – New York Bight

COMMERCIAL SLOT LIMIT: 15 – 18”

		Bag	Jan	Feb	Mar	Apr	May	Jun	Jul	Aug	Sep	Oct	Nov	Dec
C4.	NYB	34	■	■	■	■	■	□	□	■	■	■	■	■
	NJ	-	■	■	■	■	□	□	□	■	■	■	■	■

C5.	NYB	31	■	■	■	■	■	□	□	■	■	■	■	■
	NJ	-	■	■	■	■	□	□	□	■	■	■	■	■

Proposed spawning closures are from June through July for the recreational and commercial fisheries

4. Delaware – Maryland - Virginia

No reductions needed, but options to create consistent regulations across the region are presented.

4. Delaware – Maryland - Virginia

RECREATIONAL – current measures

Option	State	Size Limit	Possession Limits	Open Seasons
Option A. Status Quo	Delaware	15"	5	Jan 1 – Mar 31
			3	Apr 1 – May 11
			5	July 17 – Aug 31
			5	Sept 29 – Dec 31
	Maryland	16"	4	Jan 1- May 15
			2	May 16 – Oct 31
			4	Nov 1 – 26
	Virginia	16"	3	Jan 1 – April 30
Sept 20 – Dec 31				

4. Delaware – Maryland - Virginia

RECREATIONAL – regional options shown below

		Size	Jan	Feb	Mar	Apr	May	Jun	Jul	Aug	Sep	Oct	Nov	Dec
B.	DE	15"	4											
	MD	16"	4											
	VA	16"	4											

C.	DE	16"	5			3			5					
	MD		4											
	VA		3											

D.	DE	16"	4											
	MD		4											
	VA		4											

Proposed spawning closures are in May and June



End of Regional Management Options

QUESTIONS

For Consideration



Does the Board want to take out a 50% and 70% probability of achieving F Target for the Long Island Sound and New York-New Jersey Bight regions?

18. Commercial Quota (pg. 87-88)

Option A. Status Quo.

No specific commercial quota procedures.

Option B. Commercial Quota Procedures

A state or region may implement an annual commercial quota if the following procedures are met and Board approval is granted.

Topics included within the section:

- Decision making process within a region
- Quota rollover, transfer and overage

19. Commercial Harvest Tagging Program (pg. 88-91)

Option A. Status Quo.

No commercial harvest tagging program.

Option B. Implement a Commercial Harvest Tagging Program *(Includes Sections 4.4.1 – 4.4.7)*

All states within a regional management unit are required to participate in the commercial harvest tagging program. *De minimis* status does not preclude a state from the requirements of the commercial harvest tagging program.

All states will use the same single-use tag. The tag will be inscribed with the year of issue, state of issue and a unique number. The unique number will be linked back to the permit holder. States will distribute tags to participants. It is unlawful to sell or purchase commercially caught tautog (alive or dead) without a commercial tag.

20. Commercial Tag Application (pg. 89-90)

Sub-Section within the Commercial Harvest Tagging Program Option

Option A. Harvester Application at Harvest or Upon Landing

All commercially caught tautog will be tagged by the commercially-permitted harvester at the time of harvest or at the time of landing. Tautog must be landed in the state that is identified on the tag.

Option B. Application by Dealer

All commercially caught tautog will be tagged by a licensed dealer. The location (state) of the sale must correspond to the state identified on the tag. The tag will be applied to the fish immediately after the dealer buys the fish from the harvester.

21. Spawning Closures (pg. 91)

Option A. Status Quo; state specific spawning closures

Option B. Regional Spawning Closures

The spawning closures are intended to reduce disruption on tautog pairing and protect spawning females in perpetuity. This measure is not subject to conservation equivalency.

- The Massachusetts-Rhode Island and New Jersey-New York Bight tautog fisheries are closed from June through July.
- The Long Island Sound is closed from May through July.
- The Delaware-Maryland-Virginia tautog fisheries are closed from May through June.

22. Management Program Equivalency (pg. 93)

Option A: States can submit an alternative management program for any measures contained in Section 4 of the Amendment.

Option B. States can submit an alternative management program for any measures contained in Section 4 of the Amendment, except for the measures included in *Section 4.6 Spawning Closures*. If implemented, a state cannot open their fishery during the spawning closure.

Possession Limit Regulatory Language (pg. 91)

Concern has been raised that the absence of tautog regulations in federal waters allows for loopholes that potentially contribute to overfishing. Possession restrictions have been used successfully to control federal waters fisheries for other species. While landing restrictions are enforceable, prohibiting possession allows for a larger area where marine enforcement can intercept vessels carrying tautog in amounts or sizes that violate state regulations. This Amendment requires that all state tautog regulations to prohibit *possession*. **In federal waters, a vessel's possession limit is respective to the home port.**

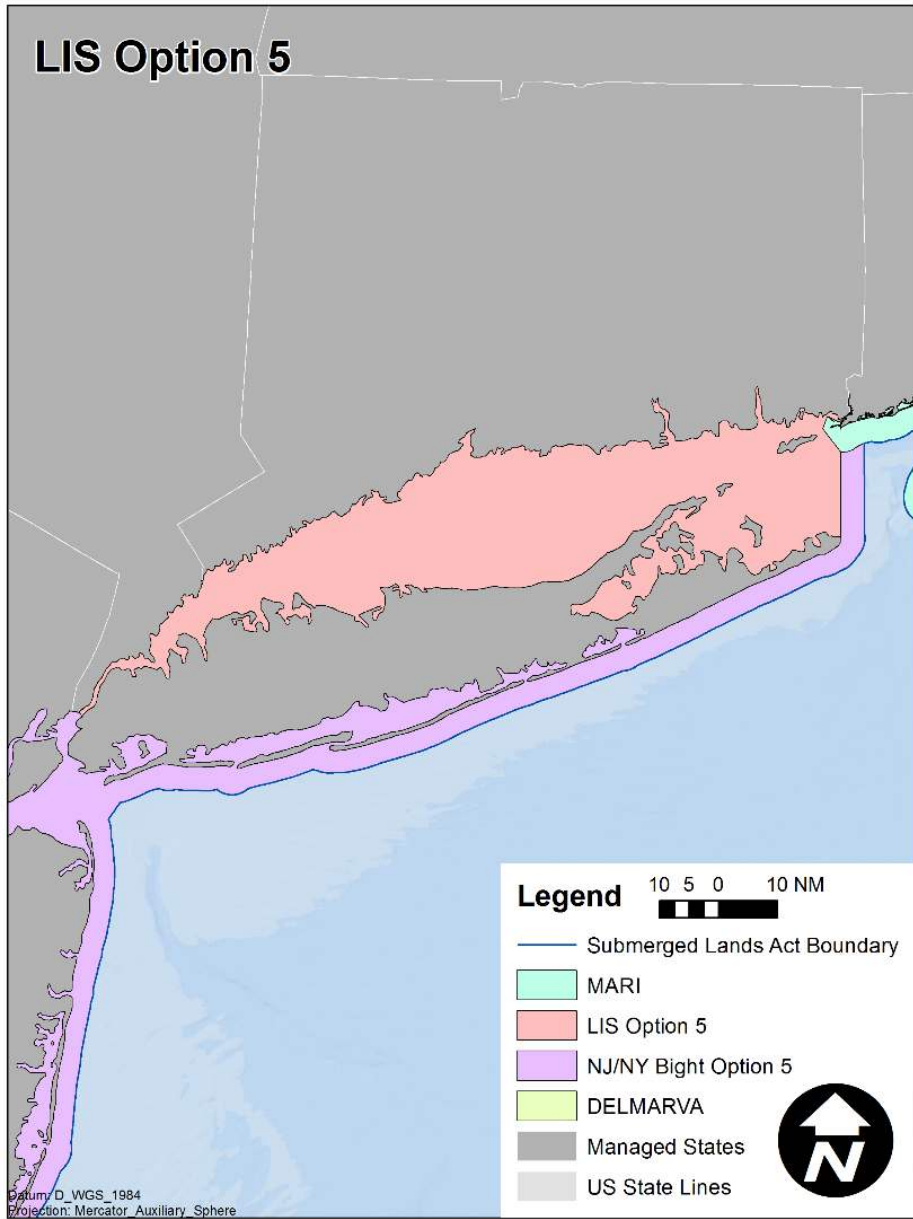


Questions

LEC Feedback

- **Long Island Sound boundaries**
- **Possession limit language in federal waters**

LIS Option 5



LIS Option 6

