



2016 Black Sea Bass Commercial State Quotas

**Summer Flounder, Scup, and Black Sea Bass
Management Board
February 2, 2016**

Background



- October 2015: the Board approved a revised Black Sea Bass commercial quota of 2.71 million lbs
- December 2015: NOAA released final rule on the 2016 Commercial Quotas for Summer Flounder, Scup, and Black Sea Bass
 - finalized 2014 landings
 - 8,896 lb overage
- January 2016: Board received memo on revised 2016 state quotas for Black Sea Bass and 2016 summer period state quotas for Scup

Final 2014 Black Sea Bass Landings



State	Landings (lbs)
Maine	0
New Hampshire	0
Massachusetts	277,276
Rhode Island	245,268
Connecticut	27,036
New York	188,436
New Jersey	486,073
Delaware	102,279
Maryland	235,689
Virginia	410,162
North Carolina	210,989
Coastwide	2,183,208
2014 Coastwide Quota	2,174,312
Overage	8,896

Revised 2016 Commercial Quota



State	% Allocation	Initial 2016 Quota
ME	0.005	13,559
NH	0.005	13,559
MA	0.13	352,525
RI	0.11	297,598
CT	0.01	26,520
NY	0.07	187,986
NJ	0.2	536,558
DE	0.05	135,591
MD	0.11	298,289
VA	0.2	542,375
NC	0.11	298,305
Total	100%	2,702,867



Questions?

2015 Scup Landings & 2016 State Quotas



State	Share	2015 ASMFC Summer Period Quota	2015 Landings ** (10/31/2015)	2016 ASMFC Quota
ME	0.00121	10,007	0	9,646
MA	0.215853	1,785,122	922,141	1,720,818
RI	0.561894	4,646,910	4,844,618	4,479,518
CT	0.031537	260,814	271,518	251,418
NY	0.158232	1,308,592	1,507,266	1,261,453
NJ	0.029164	241,189	353,571	232,501
MD	0.000119	984	17,934	949
VA	0.00165	13,646	56,812	13,154
NC	0.000249	2,059	21,844	1,985
Total	0.999908	8,269,322	7,995,706	7,972,176



Draft Addendum XXVII Public Comment Summary

Summer Flounder, Scup, and Black Sea Bass
Management Board

February 2, 2016



Background

- Draft Addendum XXVII was approved for public comment at the Joint ASMFC/MAFMC December 2015 Meeting
- It proposed regional management options for the Summer Flounder and Black Sea Bass recreational fisheries in 2016 and 2017
- Public comment closed on January 21, 2016



Statement of the Problem (Summer Flounder)

- Concern over equitable access to the Summer Flounder recreational fishery
- State by state harvest targets increasingly viewed as problematic
- Fishery management measures & performance vary along the coast



Proposed Management Program: Summer Flounder

- **Option 1: Coastwide or Conservation Equivalency**
- **Option 2: Adaptive Regional Management**
 - **Sub-Option 2A: 2015 Regions**
 - **Sub-Option 2B: Allows NJ to split regulations to E/W of the COLREGS line in Delaware Bay**

Option 1: Coastwide or Conservation Equivalency



STATE	2015 State Harvest Target (in fish)*	2015 State Harvest through Wave 5 (in fish)**	2016 State Harvest Target (in fish)***
MA	132,563	77,899	103,868
RI	137,383	158,185	107,645
CT	89,179	89,440	69,875
NY	424,201	507,383	332,376
NJ	942,401	485,170	738,404
DE	74,717	49,018	58,544
MD	72,307	37,031	56,655
VA	402,509	158,650	315,380
NC	134,973	39,204	105,756



Option 2: Adaptive Regional Management

- States implement same bag & size limit* management measures within region
 - Seasons may vary within region
 - Proposed measures would be similar to previous years' regulation
- Not intended to implement state allocations & not intended to set a precedent for state allocations.
- TC would develop regional measures → Board review & approve



Option 2A: Adaptive Regional Management Status Quo

STATE	Example Size Limit	Example Possession Limit	Example Season (number of days)
MASSACHUSETTS	16"	5	132
RHODE ISLAND	18"	8	245
CONNECTICUT	18"	5	128
NEW YORK	18"	5	128
NEW JERSEY	18"	5	128
DELAWARE	16"	4	365
MARYLAND	16"	4	365
VIRGINIA	16"	4	365
NORTH CAROLINA	15"	6	365

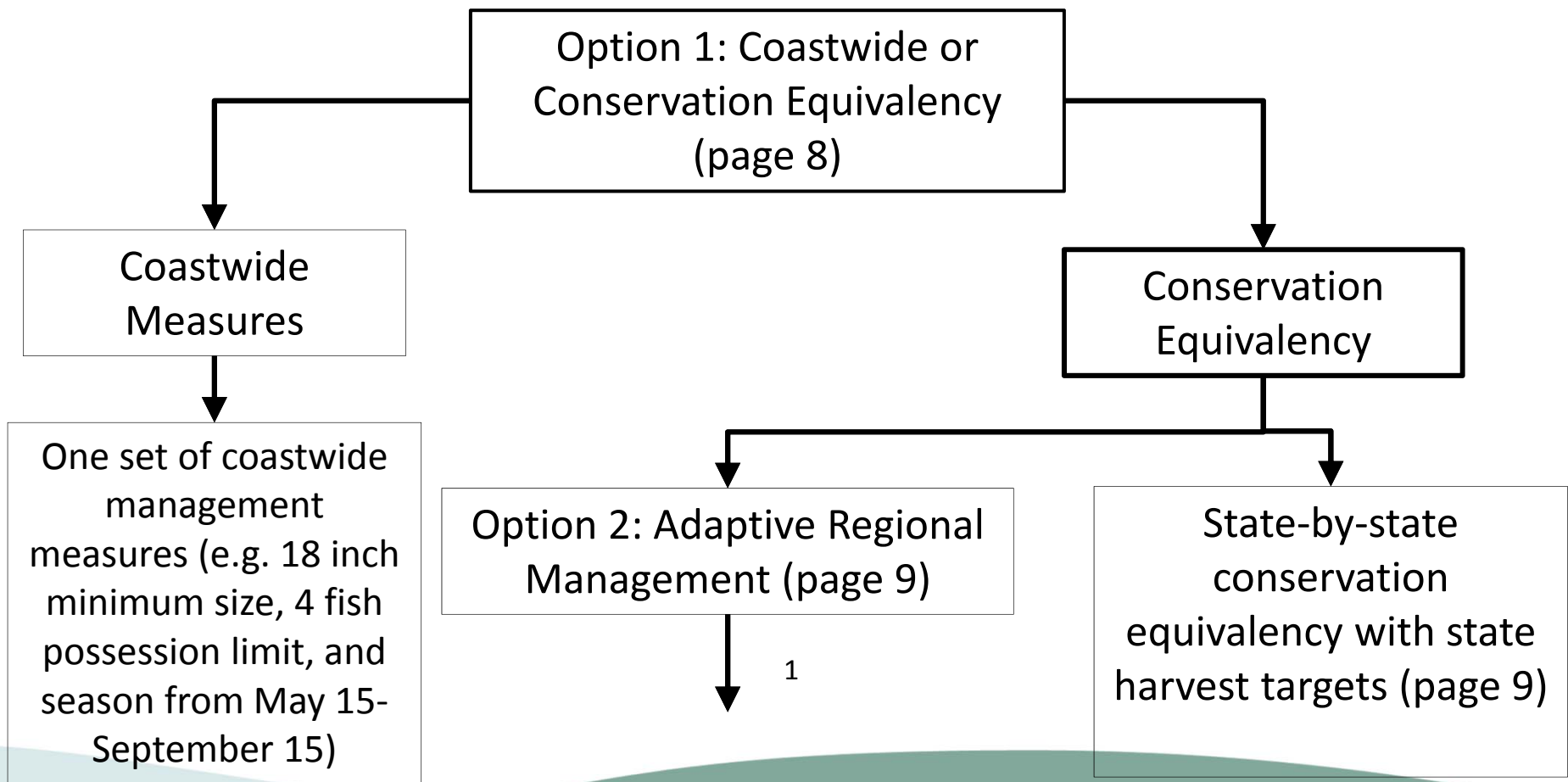
Regional Option 2B: New Jersey Delaware Bay Region



STATE	Example Size Limit	Example Possession Limit	Example Season (number of days)
MASSACHUSETTS	16"	5	132
RHODE ISLAND	18"	8	245
CONNECTICUT	18"	5	128
NEW YORK	18"	5	128
NEW JERSEY*	18"	5	128
NEW JERSEY/ DELAWARE BAY COLREGS**	17"	4	128
DELAWARE	16"	4	365
MARYLAND	16"	4	365
VIRGINIA	16"	4	365
NORTH CAROLINA	15"	6	365



ASMFC Decision Tree for Draft Addendum XXVII for Summer Flounder Recreational Management





Summer Flounder Regional Management Options

Option 2: Adaptive Regional Management (page 9)

Regional Management Option 2A: (Regional Approach used in 2014 and 2015; MA, RI, CT-NJ, DE-VA, NC)

Set Time Frame

Regional Management Option 2B: New Jersey-Delaware Bay Proposed Region(MA,RI, CT-NY, NJ, DE-VA, NC)

Set Time Frame



Proposed Management Timeframe: Summer Flounder

- **Option 1: No extension**
- **Option 2: One year through 2017**
- **Option 3: Two year through 2018**
- **Option 4: no sunset**



Draft Addendum XXVII for Public Comment (Black Sea Bass)



Statement of the Problem (Black Sea Bass)

- Wide geographic range of Black Sea Bass presents management challenges
 - Coastwide measures impact each state differently
- Addendum XXI (2011)
 - Regional management for Recreational Fishery
- Continued regional approaches through Addenda from 2012-2015



Proposed Management Program: Black Sea Bass

- **Option 1: Status Quo: Coastwide**
- **Option 2: Ad-Hoc Regional Management**



Proposed Management Program: Black Sea Bass

- **Option 2: Ad Hoc Regional Measures**
 - **Two Regions**
 - **Northern Region (MA-NJ)**
 - **Southern Region (DE-NC)**



Proposed Management Timeframe: Black Sea Bass

- **Option 1: No extension stops at end of 2016**
- **Option 2: One year through 2017**
- **Option 3: Two year through 2018**
- **Option 4: no sunset**

Public Comment Summary



- **Public Hearings**

- Virginia thru Massachusetts in January 2016
- 105 people attended across 7 states
- Commissioners in attendance

- **Written Submitted Comments**

- A total of 52 comments were received
- 9 groups/organizations provided comments

Public Hearings Summary



Summer Flounder

- Support was split between 4 states for Option 2A, regional management status quo and Option 2B, NJ Delaware Bay region
 - No clear majority in New York, Virginia, and Massachusetts
- Total numbers from public hearings favored support for Option 2B (42) compared to support for regional management status quo Option 2A (10)

Public Hearings Summary Cont'd



Summer Flounder Cont'd

Reasons cited in support of Option 2B: New Jersey Delaware Bay Region

- Concern over different size limits in the DE Bay has had economic impact on southern NJ anglers
- Concern over different management measures on shared water body
- Fishing on same size fish

Preferred timeframe was Option 1: 2016 only

- Return to state by state conservation equivalency in 2017

Public Hearings Summary Cont'd



Summer Flounder Cont'd

Reasons cited in support of Option 2A: Regional Management Status Quo

- Regional Management measures have worked the past two years
- Concern over New Jersey becoming its own region
- Concern over the number of regions/management measures under option 2B

Preferred Timeframe option varied along the coast for multiple years

Public Hearings Summary Cont'd



Black Sea Bass

- Few comments in support of options
- 13 in support of Option 2: Ad Hoc Regional Management
 - Ad Hoc Regional management measures have worked the past two years
 - Interest in separate measures between north and south

Preferred Timeframe option varied between 1 and 2 years (2016 or 2016-2017)

- Mismatch in observed abundance & harvest limits
- Consider going out of compliance (NJ)

Written Comment Summary



Summer Flounder

- Majority did not specify an option in the draft addendum
 - Many requesting 17” size limit for southern NJ
- 15 were in favor of Option 2B: NJ/DE Bay region

Reasons cited

- Concern over different size limits in the DE Bay has had economic impact on southern NJ anglers
- Concern over different management measures on shared water body

Preferred timeframe option was option 1: 2016 only

Written Comment Summary Cont'd



Summer Flounder

Few comments in favor of Option 2B: Regional Management Status Quo

Reasons cited

- Regional Management measures have worked the past two years
- Concern over New Jersey becoming its own region
- Preferred Timeframe option varied along the coast for multiple years

Written Comment Summary



Black Sea Bass

- Majority did not specify an option in the draft addendum
 - Recommended that 23% reduction not be implemented in 2016
- 3 in favor of continuing Option 2: Ad hoc regional management
 - Reasons cited: ad Hoc Regional management measures have worked the past two years

Advisory Panel Summary



Summer Flounder

- 6 were in support of Option 2B: New Jersey Delaware Bay Region

Reasons cited

- Concern over different size limits in the DE Bay has had economic impact on southern NJ anglers
- Concern over different management measures on shared water body
- 2 in support of Option 2A: Regional Management Status Quo

Black Sea Bass

- 6 were in favor of continuing Option 2: Ad Hoc Regional Management
 - Preference for ad hoc regional approaches over coastwide measures



Questions?



TC Review of Draft Addendum XXVII

Rec. Summer Flounder Harvest 2013-2015



STATE	2013 HARVEST (A+B1 fish)	2014 HARVEST (A+B1 fish)	2015 HARVEST (A+B1 fish) through Wave 5	2015:2014
MA	31,228	112,840	77,899	0.69
RI	127,713	184,668	158,185	0.86
CT	269,650	119,502	89,440	0.75
NY	518,016	509,131	507,383	1.00
NJ	1,244,432	1,175,383	485,170	0.41
DE	58,279	93,029	49,018	0.53
MD	53,180	79,513	37,031	0.47
VA	186,916	139,431	158,650	1.14
NC	44,941	45,708	39,204	0.86

Regional Option 2B (New Jersey Delaware Bay)



STATE	Example Size Limit	Example Possession Limit	Example Season (in number of days)	2016 Regional Harvest Estimate	2016 RHL
MA	16"	5	132	77,899	
RI	18"	8	245	158,185	
CT	18"	5	128		
NY	18"	5	128	596,823	
NJ*	18"	5	128		
NJ/ DE BAY COLREGS**	17"	4	128	490,626	
DE	16"	4	365		
MD	16"	4	365	244,852	
VA	16"	4	365		
NC	15"	6	365	39,466	
Total				1,607,852	1,882,562

NJ DE Bay 2015 SFL harvest was 15,501 fish.

Proposed liberalization of regulations:
-17"
-4 fish
-128 days

Liberalizes harvest by 35.2% or 5,456 additional fish.



Regional Option 2B (NJ/DE Bay) cont.

	New Jersey			Delaware	
YEAR	Total Harvest A+B1 fish	DE Bay A+B1 fish	35.2% Lib. (fish)	Total Harvest A+B1 fish	DE Bay A+B1 fish
2012	1,130,407	83,767	29,486	45,474	17,060
2013	1,244,432	0	0	58,279	17,359
2014	1,175,383	87,335	30,742	93,029	40,035
2015	485,170	15,501	5,456	49,018	17,883

2015 SFL rec. harvest was lower than 2014 harvest for 8 out of 9 states, but significantly lower in NJ – MD (MRIP? Availability? Stock size?)

To account for estimate volatility, TC looked at NJ harvest in DE Bay in other years that better reflect normal magnitude of NJ's DE Bay harvest:

- ~31,000 to ~6,000 fish liberalization at 17.0", 4 fish, and 128 days**
- 2016 RHL is 1.87 million fish**

2016 SFL Adaptive Regional Management



Current projections for 2016 based upon Regional Options 2A & 2B estimate ~1.6 million fish harvested

These options project an *under-harvest* of the 2016 RHL of over 200,000 fish based upon

Performance of rec. SFL fisheries in 2015:

- **Same measures in 2014 states harvested 2.46 mil fish**
- **RHL will drop again in 2017, by 2.6% according to the annual specs. approved in August 2015**
- **Continued depressed recreational harvest would corroborate the most recent assessment update findings (June 2015)**
- **Next assessment update is planned for Summer 2016**

RI Charter Captains' Cooperative



- Limited entry group of charter vessels seek an allotment of summer flounder to better serve their customers and businesses:
 - Seeking flexibility with regards to size limit
 - Reduce discards
 - More stable business environment
 - Higher quality catch reporting and monitoring
- Used RSA in 2013 and 2014 for pilot program
- RSA suspended, similar program request failed to gain Board support for 2015 season
- MRIP data will be biased and confounded
- Where do fish come from? Harvest needs thus far (2014-2015) have been fluid across regions as long as RHL hasn't been exceeded



Questions?



LEC Comments

Draft Addendum XXVII

Presented to Summer Flounder, Scup
& Black Sea Bass Management Board

February 2016



LEC Review

- Conference Call on January 7, 2016
- 18 enforcement members participated
- General Comment on Timing
 - For both summer flounder and black sea bass
 - Extend timeframes of measures as long as possible



Summer Flounder

- LEC reviewed new option for New Jersey
 - Recognize intent to provide consistency in Delaware Bay
 - Consistency trade-off
 - Increased confusion in southern New Jersey
 - Example of differing regs in state parks
- No Consensus but LEC urges broader consistency in recreational regulations



Black Sea Bass

- LEC supports continuation of ad hoc measures
- Strongly recommends continuing efforts to maximize regional consistency



Scup Recreational Proposals

Summer Flounder, Scup and Black Sea Bass
Management Board

February 2, 2016

Background



- December 2015, the Board & Council approved federal recreational scup management measures for 2016:

9" minimum size

50 fish possession limit

Open Season: January 1-December 31

- Board moved to continue regional approach in state waters in 2016 and finalize state measures at Winter Meeting
- No new proposals- status quo measures for 2016

Background (cont'd)



- 2015 Recreational Harvest ~4.75 million lbs of Scup (4.38 million fish)
- Northern States (MA-NY) account for 99% of Atlantic coast landings of Scup in 2015
- Harvest compared to 2015 RHL: 70%
- 2016 RHL: 6.09 million lbs
- Northern Region could liberalize ~28%

2016 Recreational Scup Measures



- Massachusetts, Rhode Island, Connecticut & New York:
 - Status quo
 - 10” min size, 30 fish, May 1-December 31
 - Single wave “bonus season” for For-Hire vessels (45 fish possession limit)
- New Jersey through North Carolina
 - 9” min size, 50 fish, January 1-December 31



Questions?



Black Sea Bass Recreational Proposals

Summer Flounder, Scup and Black Sea Bass
Management Board

February 2, 2016

Background



December 2015 the Board and MAFMC Council members voted to continue ad hoc regional approach as stipulated in Addendum XXV.

- Northern Region (MA – NJ): Varied proposals
- Southern Region (DE – NC N of Cape Hatteras)
 - Measures consistent w/ Federal Rule. Currently recommended:
12.5” min. size, 15 fish possession limit, 5/15 - 9/21 & 10/22– 12/31

Background Cont'd.



- Total Harvest for 2015 is projected to be 3.64 million lbs (2.08 million fish)
 - 2015 RHL was 2.33 million lbs (1.32 million fish)
- 2016 black sea bass RHL is 2.82 million lbs (1.61 million fish)
- 23.2 % reduction is needed to achieve the RHL
 - Taken from Northern Region (MA-NJ) which accounts for 97% of 2015 harvest

TC Review of Black Sea Bass Proposals



- Attempt to construct similar regulations at the regional level
- Interaction Calculation for Reduction
 $(X+Y) - (X*Y)$
X= % decrease associated seasonal closure
Y- % decrease associated with size/possession limit
- TC is seeking Board approval of methodologies and general principles to allow for future:
 - Consideration of Wave 6 data
 - Public input into final measures adopted by each state

TC Review of Black Sea Bass Proposals



Use of minimum size increases in harvest reductions

- Average fish size (weight) increases and full reduction is not actually realized even if number of fish decreases appropriately
- TC has not settled upon an appropriate approach to analyze this effect
- The TC is committed to addressing this issue through harvest specification setting later in 2016

TC Review of Black Sea Bass Proposals



Particularly among Northern States (MA-NJ), success in meeting required harvest limits varies by state and year

- Entire region is subject to same uniform reduction regardless of performance of measures
- Perhaps in the future a different method of addressing BSB recreational management is required
 - True regional measures
 - Allocations

TC Review of Black Sea Bass Proposals



Regulatory complexity continues to be a problem

- Possession limits and season lengths differ by mode and/or wave
- Calculating and evaluating complex proposals is difficult
- Many aspects of generating measures have yet to be standardized among states
- Some TC members objected to liberalizing aspects of measures (season or min. size or possession limit) during a reduction

TC Review of Black Sea Bass Proposals



Ad-hoc regional management Addendum language states that “*while not required, states will work to develop consistent regulations...*”

- Measures from state to state lack any sense of consistency
- Consistency is possible but requires Board support
- One TC member suggested that any future liberalizations be utilized to create greater regional consistency

TC Review of Black Sea Bass Proposals



Current management is heavily impaired by catch limits

- Repeated year to year reductions have eroded stability, credibility and compliance
- 2016 Benchmark Stock Assessment is scheduled for peer review December 2016
- Post review, new regional alignments may be appropriate
- Ad-hoc regional management should be reviewed at this time

Massachusetts Rec Black Sea Bass Proposal



MA's 2015 recreational BSB fishery was:

14" minimum size, 8 fish 5/23 – 8/27

–2015 harvest of 351,000 fish (PSE 16.9)

Options use season length and bag limit to achieve 23.2% reduction (2014 daily rate used to extend season into Wv 5)

Seasonal Reduction Only				
Open Date	Close Date	Bag Limit	Minimum Size	Expected Reduction (%)
21-May	4-Jul	8	14"	23.5
28-May	30-Jul	8	14"	23.3
Bag Limit Reduction and Seasonal Adjustment				
Open Date	Close Date	Bag Limit	Minimum Size	Expected Reduction (%)
28-May	20-Aug	5	14"	23.2
30-May	5-Sep	4	14"	23.5
28-May	12-Sep	3	14"	23.9

Rhode Island Rec Black Sea Bass Proposal



RI's 2015 recreational BSB fishery:

14" minimum size, 1 fish 7/2 – 8/31 & 7 fish 9/1 – 12/31

–2015 projected harvest of 234,747 fish (~17.3 PSE)

Options use season length and bag limit to achieve 23.2% reduction

Bag Limit		Minimum Size	Wave 3 (open days)	Wave 4 (open days)	Wave 5 (open days)	Wave 6 (open days)	Reduction
Split Bag	3	14	-	62		-	0.235
	7		-	-	39	-	
Split Bag	3	14	-	38	-	-	0.236
	4		-	-	53	-	
Single Bag	3	14	-	62	40	0	0.236
Single Bag	3	14	-	43	61	61	0.236

Rhode Island Rec Black Sea Bass Proposal cont'd



Proposed mode split for P&C (w/ additional reporting):

Mode	Bag Limit	Minimum Size	Wave 3 (open days)	Wave 4 (open days)	Wave 5 (open days)	Wave 6 (open days)	Reduction
Shore and Private/Rental Boat	3	14	-	43	61	61	0.272
Party and Charter	7	14	-	-	61	61	

2015: 14" minimum size, 1 fish 7/2 – 8/31 & 7 fish 9/1 – 12/31

- TC opposes mode splits due to data quality issues, regulatory complexity, and future calculation difficulties
- Mode splits have occurred in CT and MA for BSB
- RI P&C mode is relatively small, 13% in 2015, 16% 3yr Avg
- Reduction is greater than 23% to account for uncertainty
- Optional mode split, MRIP data could be biased and will be confounded

Connecticut Rec Black Sea Bass Proposal



CT's 2015 recreational BSB fishery:

14" minimum size

Private mode: 3 fish 6/1-8/31 & 5 fish 9/1-12/31

P & C mode(LOA): 8 fish 6/21-12/31

–Projected 2015 harvest of 262,396 fish (~19.7 PSE)

Data quality suffers at smaller scales

CT P&C program is NOT optional (MRIP data not confounded)

Additional reporting (logbooks) is required

CT P&C program in effect since 2013

CT proposal uses changes to the minimum size limit, season length and possession limit to achieve 23% reduction

Connecticut Rec Black Sea Bass Proposal cont'd



	2015 MEASURES	OPTION 1	OPTION 2	OPTION 3	OPTION 4
PRIVATE MODE SEASON	June 1 – Dec 31	June 27 – Dec 31	July 24 – Dec 31	May 1 – Dec 31	June 16 – Oct 9 Nov 1 – Dec 31
PARTY/CHARTER SEASON	June 21 – Dec 31	June 27 – Dec 31	July 24 – Dec 31	May 1 – Dec 31	June 16 – Oct 9 Nov 1 – Dec 31
MINIMUM LENGTH	14”	14.5”	14”	15”	14”
PRIVATE MODE CREELWAVE 3 AND 4	3	3	3	5	5
PRIVATE MODE CREEL WAVE 5 AND 6	5	5	5	5	5
PARTY CHARTER CREEL	8	6	6	8	6

New York Rec Black Sea Bass Proposal



NY's 2015 recreational BSB fishery:

14" minimum size, 8 fish 7/15-12/31

–2015 projected harvest 714,016 fish (~17.1 PSE)

NY proposal uses changes to the season length and bag limit to achieve the 23% reduction

OPTION	POSSESSION LIMIT	OPEN SEASON
<i>2015</i>	<i>8/10</i>	<i>July 15-Oct. 31/Nov. 1-Dec. 31</i>
1	3	July 16-Dec.31
2	4	July 22-Dec. 31
3	4	July 21-Oct. 31
4	4	July 15-Oct. 13
5	4	July 15-Sept. 21 and Oct. 10-Dec. 31
6	5	July 15-Sept. 21 and Oct. 21-Dec. 31
7	5	July 27-Dec. 31
8	5	July 15-Oct. 2
9	2/8/10	July 11-Aug. 31/Sept. 1-Oct. 31/Nov. 1-Dec. 31

New Jersey Rec Black Sea Bass Proposal



NJ's 2015 recreational BSB fishery:

12.5" minimum size, 15 fish 5/27-6/30, 2 fish 7/1-7/31, &
15 fish 10/22-12/31

–2015 projected harvest 449,927 fish (~27.0 PSE)

NJ proposal uses changes to the minimum size limit, season length and bag limit to achieve the 23% reduction

New Jersey Rec Black Sea Bass Proposal



1		Wave 3	Wave 4	Wave 5	Wave 6	Perc Redx
2016	bag3	15	2	15	15	23.8
	size1	12.5	12.5	12.5	12.5	
	days2	22	31	10	61	
	Season	June 9-June 30	July 1-July 31	Oct 22-Oct 31	Nov 1-dec 31	
2		Wave 3	Wave 4	Wave 5	Wave 6	Perc Redx
2016	bag3	14	2	14	14	23.01
	size1	13	13	13	13	
	days2	33	31	10	61	
	Season	May 29-June 30	July 1-July 31	Oct 22-Oct 31	Nov 1-dec 31	
3		Wave 3	Wave 4	Wave 5	Wave 6	Perc Redx
2016	bag3	10	2	10	10	24.28
	size1	12.5	12.5	12.5	12.5	
	days2	26	31	10	61	
	Season	June 5-June 30	July 1-July 31	Oct 22-Oct 31	Nov 1-dec 31	
4		Wave 3	Wave 4	Wave 5	Wave 6	Perc Redx
2016	bag3	7	2	7	7	23.07
	size1	12.5	12.5	12.5	12.5	
	days2	33	31	10	61	
	Season	May 29-June 30	July 1-July 31	Oct 22-Oct 31	Nov 1-dec 31	

2015
12.5" min. size
15 fish
5/27-6/30

2 fish 7/1-7/31
15 fish
10/22-12/31



Questions?



Black Sea Bass and Summer Flounder Amendment Process

Summer Flounder, Scup and Black Sea Bass
Management Board

February 2, 2016

Background



- August 2015: the Board and Council agreed to initiate a scoping process for a draft Scup Amendment before the end of the year
- October 2015: Council discussed tabling the Scup Amendment process and move forward with a new Black Sea Bass Amendment.
- December 2015: the Board and Council agreed to initiate a draft Amendment for Black Sea Bass

Background (cont'd)



- Board expressed interest in addressing Black Sea Bass ahead of Scup due to current challenges
- Black Sea Bass Amendment was initiated to address current challenges
 - 2016 Benchmark Stock Assessment
 - Overages and Harvest limits
 - Commercial landings accountability
 - Regional approaches to recreational management

Next Steps



- Summer Flounder Amendment
 - FMAT working groups will convene over the spring-summer 2016 to begin development of management alternatives
 - Draft alternatives would be presented to the Board in August 2016
- Black Sea Bass Amendment
 - Draft Scoping Document would be developed over the spring-summer 2016
 - Board would consider Scoping Document for public comment in August 2016
 - Scoping Hearings and public comment would be in Fall 2016



Questions?