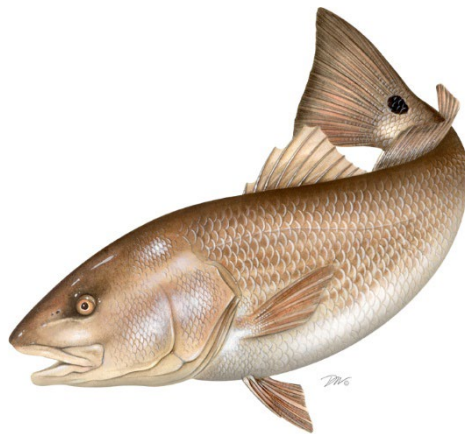




Update on Board Tasks to Red Drum Technical Committee



Sciaenids Board
February 4, 2025

Board Tasking



- Original task:
 - *Produce the static spawning potential ratio for a range of slot size limits (between 14" and 27") associated with bag limits ranging from 0 to 5 fish per person for: (a) the southern region and/or (b) SC, GA, FL individually*
- Additional guidance requested:
 - Interpretation of yellow traffic light results (“Moderate Action”)
 - Determine if there are methods for providing estimates of bag and slot limit regulation change impacts on the northern stock, despite not having a SS model to provide projections

Revised Board Tasking



- TC determined southern stock task could not be addressed in a reasonable timeframe without a narrow set of management options to consider
- Administrative Commissioners from southern stock states agreed to revise task via email:
 - *Determine stockwide catch reduction necessary to achieve management target of $SPR_{40\%}$ and regulation changes that will achieve the necessary catch reduction*

TC Meetings



- TC met on 11/7/2024
 - Developed request for Board guidance on tasking
 - Formed a working group to develop catch reduction methods and tools
- Working group met twice
 - 11/20/2024
 - 1/13/2025
- TC met on 1/31/2025
 - Reviewed catch reduction methods and tools
 - Reviewed southern stock projections
 - Discussed guidance on northern stock items

Catch Reduction Analyses



- Status quo catch adjusted according to proposed bag, vessel, and/or size limit changes
- Catch adjustments account for dead discards due to shifting harvest to releases
- Adjusted catch compared to status quo catch to determine reduction in dead catch (harvest+dead discards) from proposed regulations

Catch Reduction Analyses

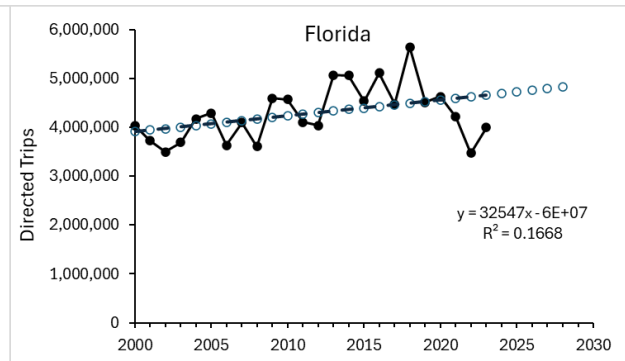
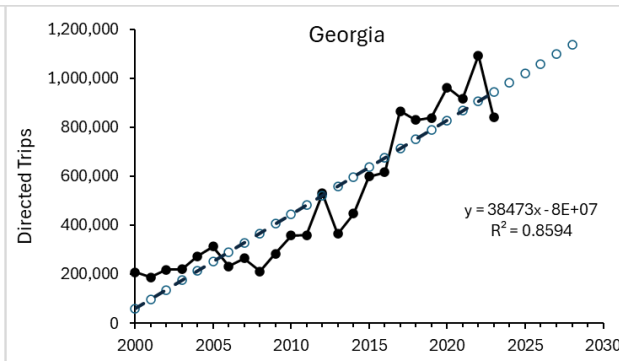
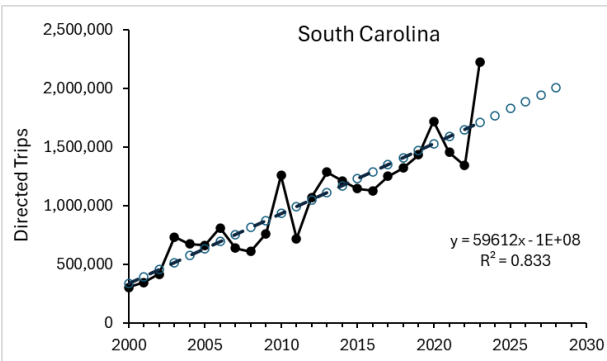


- Uses MRIP data from 2018-2021 fishing years as status quo catch
 - Consistent management across states
- Analyses account for additional documented mortality (non-compliance and observed dead discards) based on observed rates
- TC reviewed and approved methods and tools, will now apply these to their data under proposed regulation changes

Effort Change Sensitivity



- Inform the Board of risk due to increasing effort
- MRIP directed trips (red drum primary or secondary target)



*****2023 Data preliminary

Data	SC	GA	FL
2018-2021 average	1,497,105	810,111	4,541,441
2025-2028 average	1,914,392	1,079,423	4,769,270
% Increase	28%	33%	5%

Projections for Southern Stock

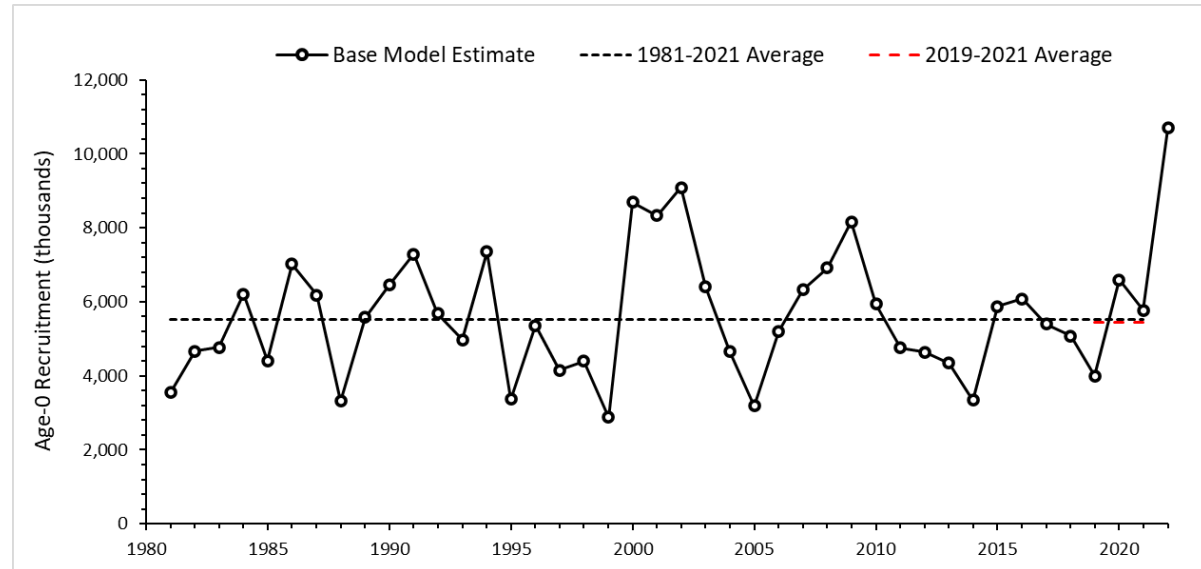


- Project stock forward from terminal year
- Project until equilibrium catches reached
- Compare catch at end of projection period under status quo F and $F_{40\%}$ to determine stockwide catch reduction needed to achieve $F_{40\%}$
 - $F_{40\%}$ is the F level associated with $SPR_{40\%}$

Projections for Southern Stock



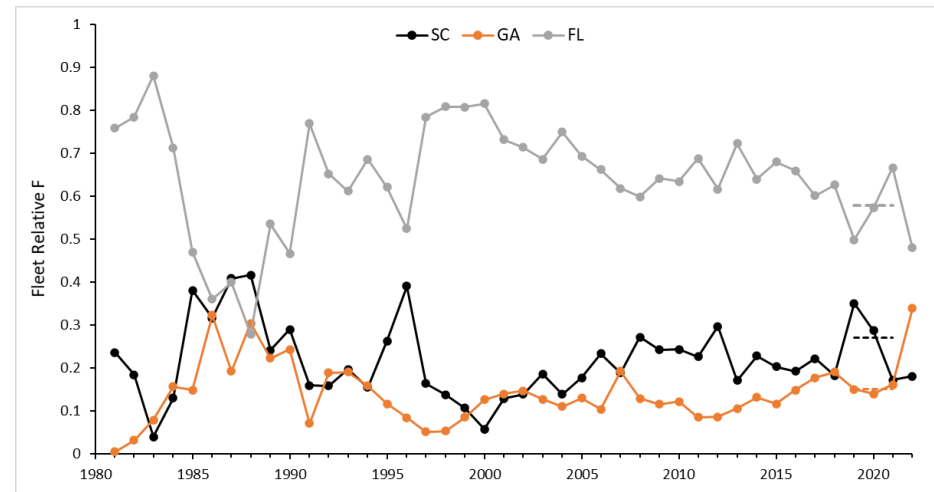
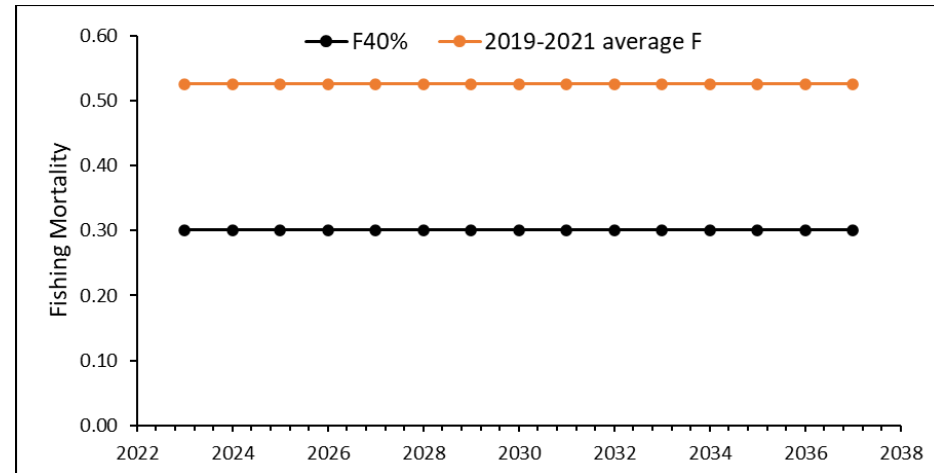
- Recruitment
 - Average over specified year range
 - Full model time series from 1981-2021
 - 2022 model estimates not recommended for status estimates



Projections for Southern Stock



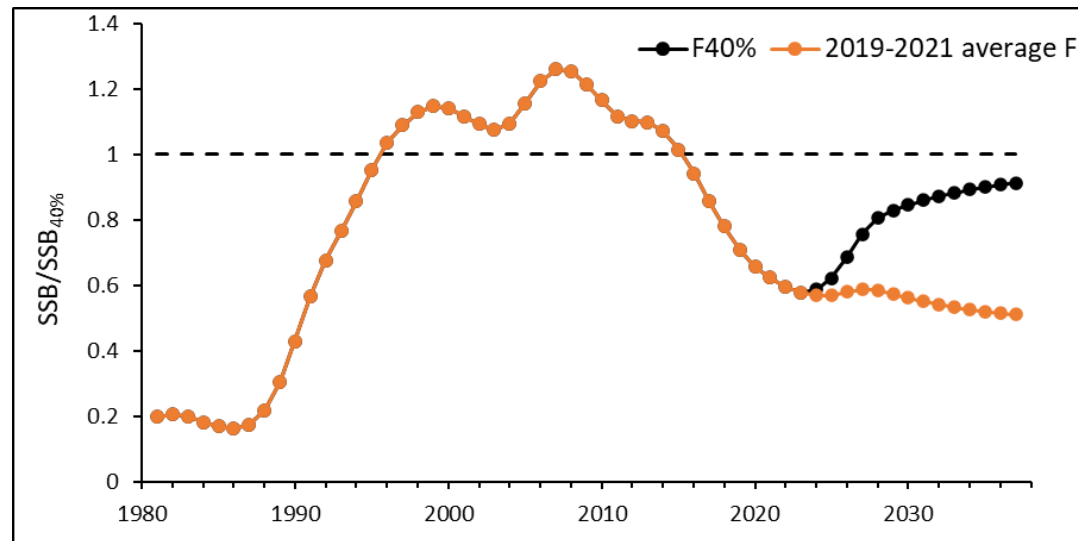
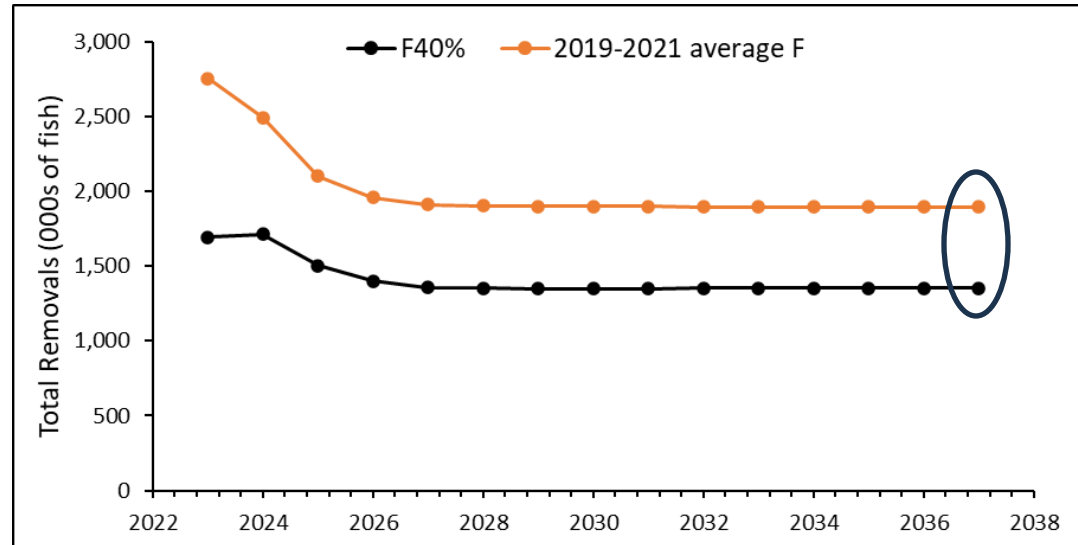
- Fishing Mortality
 - Projections use specified F
 - Projection 1: Status quo F projection
 - Average F from status years (2019-2021; 0.526)
 - Projection 2: $F_{40\%}$ projection
 - Model estimated $F_{40\%}$ reference point (0.301)
 - F partitioned among fleets based on 2019-2021 average relative F
 - FL regulation changes in September 2022 not accounted for in time series used for stock status determination
 - To be accounted for in catch reduction analyses



Projections for Southern Stock



- 15 year projections
- Constant F levels across projection years within projection
- Catch reduction from status quo F to $F_{40\%} = 28.7\%$



Next Steps



- Southern stock TC members will use catch reduction analyses to determine proposed regulations that meet the specified percent reduction
- TC will meet again to review proposed regulations and finalize guidance on northern stock items
- Final report provided in meeting materials for May Board meeting

Board Feedback



- TC recommends additional documented mortality be accounted for in catch reduction analyses
 - Does the Board agree?
- TC recommends sensitivity analysis of changing effort on catch reductions
 - Is this something the Board would like?
- Should all states aim for even catch reductions equal to the stockwide reduction estimated with projections or collaborate to reach the stockwide reduction?

Questions?

