



***ISFMP Policy Board Directive to  
the Summer Flounder, Scup, and  
Black Sea Bass Board for  
Changes to Section 3.1.1 of  
Addendum XXXIII***

# Addendum XXXIII



- *Ad XXXIII was approved February 2021 by the Board and Council*
- *New York appealed the allocation decisions in Addendum XXXIII*
- *The ISFMP Policy Board:*
  - *Reviewed the NY Appeal*
  - *Found the appeal justified*
  - *Directed the Summer Flounder, Scup and Black Sea Bass Board to take corrective action*

# Long Island Sound and the Original Allocations Established by Amendment 13



**Table 14. Black sea bass commercial landings by distance from shore, 1999.**

	Black Sea Bass			% EEZ
	0-3 miles ( <u>'000 lbs</u> )	3-200 miles ( <u>'000 lbs</u> )	Total ( <u>'000 lbs</u> )	
ME	NA	NA		
NH	NA	NA		
MA	571	3	574	0.5
RI	65	111	176	63.1
CT	2	12	14	85.7
NY	82	127	209	60.8
NJ	8	493	501	98.4
DE	NA	NA		
MD	78	407	485	83.9
VA	2	738	740	99.7
NC	26	564	590	95.6
Total	834	2455	3289	74.6

Source: NMFS General Canvass Data.

# Long Island Sound: Shared State Waters and Shared Abundance

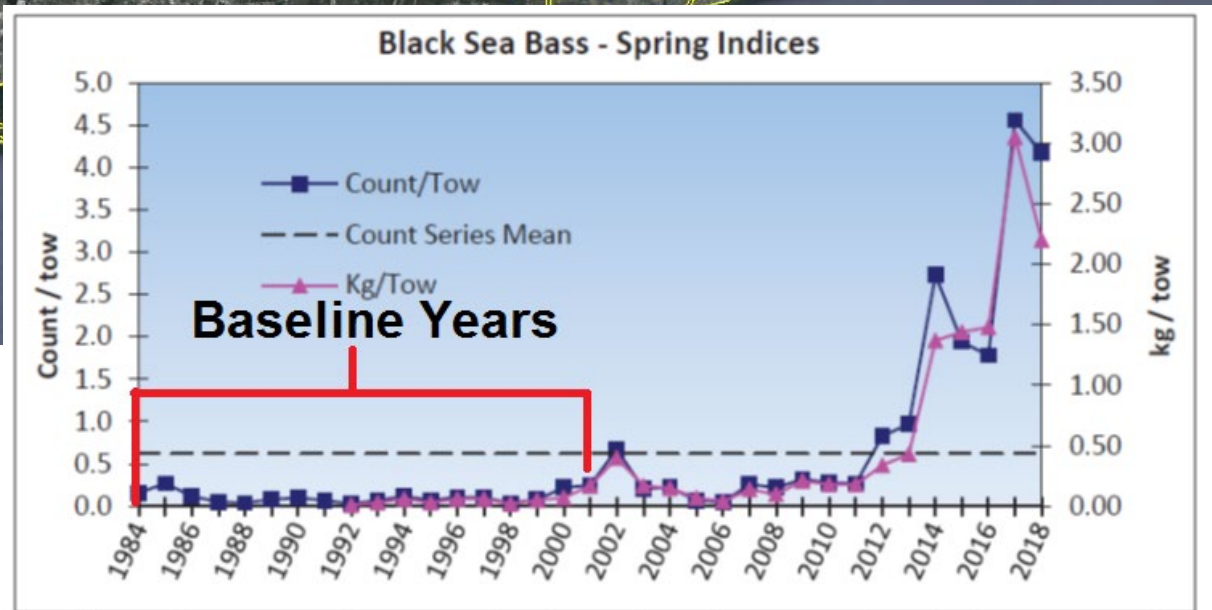
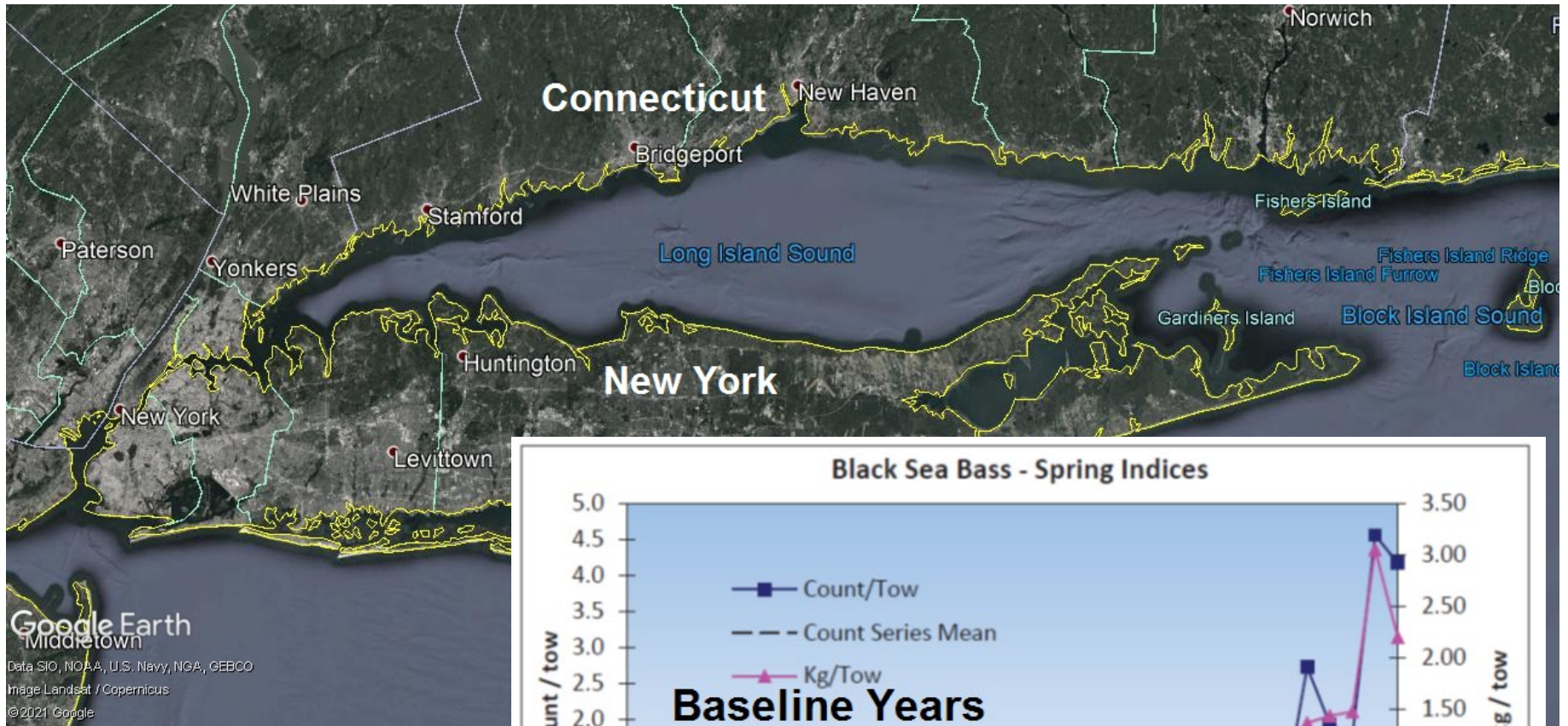
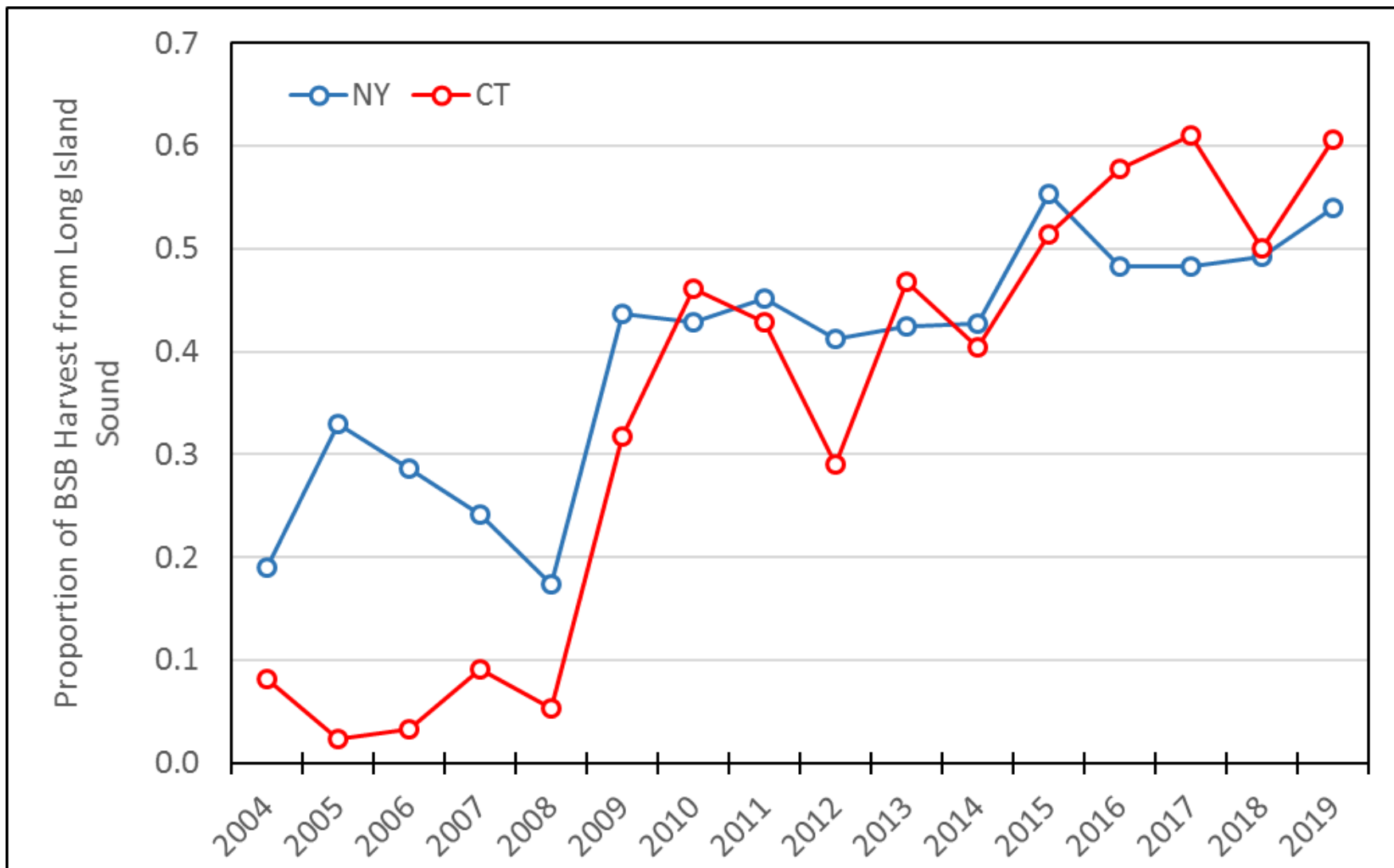


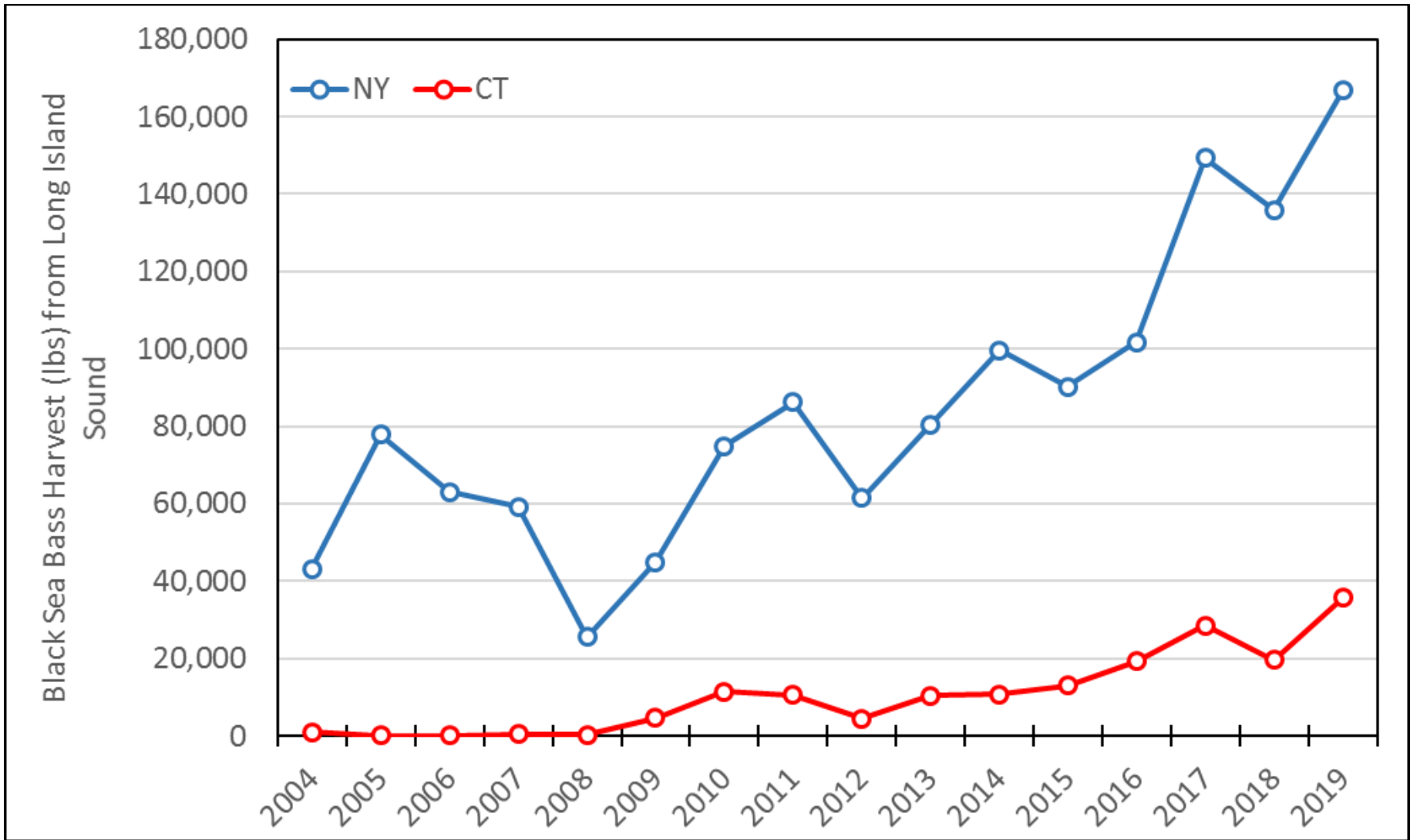
Figure 5. Connecticut Long Island Sound Trawl Survey Spring Black Sea Bass Index

# Long Island Sound Black Sea Bass Harvest as a Proportion of the Each State's Total Annual Black Sea Bass Harvest





# Commercial Black Sea Bass Harvest from LIS



# ISFMP Policy Board Direction



1. Addresses impacts to New York's baseline in a manner comparable to the consideration given CT for the expansion of black sea bass into LIS
2. Increase NY's baseline quota up to 2%
3. Do not decrease Connecticut baseline allocation
4. Do not change the % of quota redistributed according to regional biomass.

# Current Ad XXXIII Allocations



State	Approved Addendum XXXIII Baseline Allocations	Approved Addendum XXXIII Allocations with Regional Component
ME	0.25%	0.40%
NH	0.25%	0.40%
MA	12.77%	15.71%
RI	10.81%	13.29%
CT	3.00%	3.69%
NY	7.00%	8.61%
NJ - N	9.83%	20.11%
NJ - S	9.83%	
DE	5.00%	4.08%
MD	10.81%	8.83%
VA	19.65%	16.05%
NC	10.81%	8.83%
<b>Total</b>	<b>100%</b>	<b>100.00%</b>



# Increase NY Baseline by 2%



State	Addendum XXXIII Approved Baseline Allocations	New Baseline Allocations	Difference for New Baseline	Resulting 2022 Allocation
ME	0.25%	0.25%	0.00%	0.40%
NH	0.25%	0.25%	0.00%	0.40%
MA	12.77%	12.47%	-0.30%	15.17%
RI	10.81%	10.55%	-0.26%	12.84%
CT	3.00%	3.00%	0.00%	3.65%
NY	7.00%	9.00%	2.00%	10.95%
NJ - N	9.83%	9.59%	-0.23%	19.52%
NJ - S	9.83%	9.59%	-0.23%	
DE	5.00%	5.00%	0.00%	4.09%
MD	10.81%	10.55%	-0.26%	8.64%
VA	19.65%	19.19%	-0.47%	15.70%
NC	10.81%	10.55%	-0.26%	8.64%
<b>Total</b>	<b>100%</b>	<b>100%</b>	<b>0%</b>	<b>100.00%</b>

# Questions?



# Increase NY Baseline by 1%



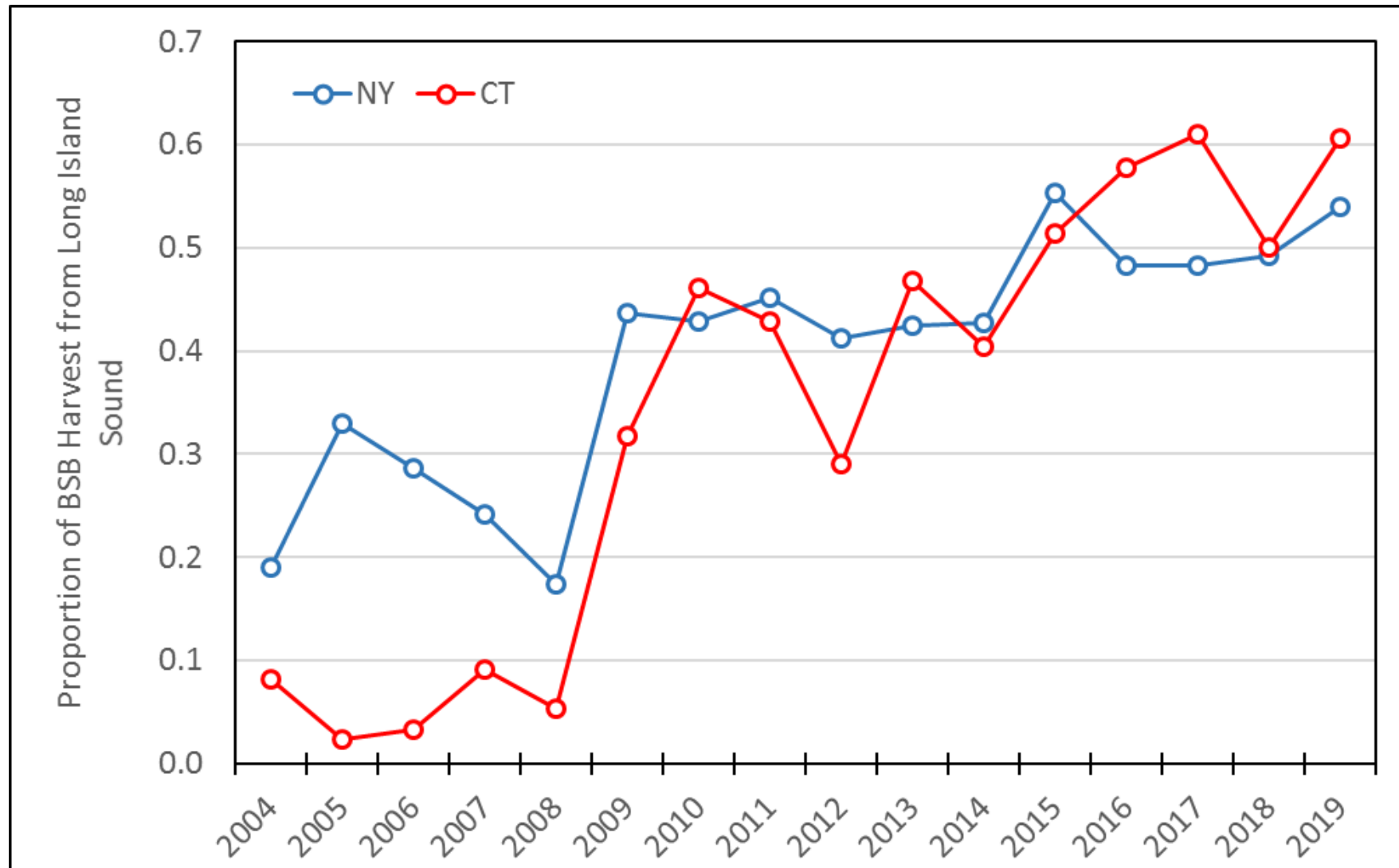
State	Addendum XXXIII Approved Baseline Allocations	New Baseline Allocations	Difference for New Baseline	Resulting 2022 Allocation
ME	0.25%	0.25%	0.00%	0.40%
NH	0.25%	0.25%	0.00%	0.40%
MA	12.77%	12.62%	-0.15%	15.44%
RI	10.81%	10.68%	-0.13%	13.06%
CT	3.00%	3.00%	0.00%	3.67%
NY	7.00%	8.00%	1.00%	9.79%
NJ - N	9.83%	9.71%	-0.12%	19.81%
NJ - S	9.83%	9.71%	-0.12%	
DE	5.00%	5.00%	0.00%	4.09%
MD	10.81%	10.68%	-0.13%	8.73%
VA	19.65%	19.42%	-0.23%	15.88%
NC	10.81%	10.68%	-0.13%	8.73%
<b>Total</b>	<b>100%</b>	<b>100%</b>	<b>0%</b>	<b>100.00%</b>

# Increase NY Baseline by 1.25%

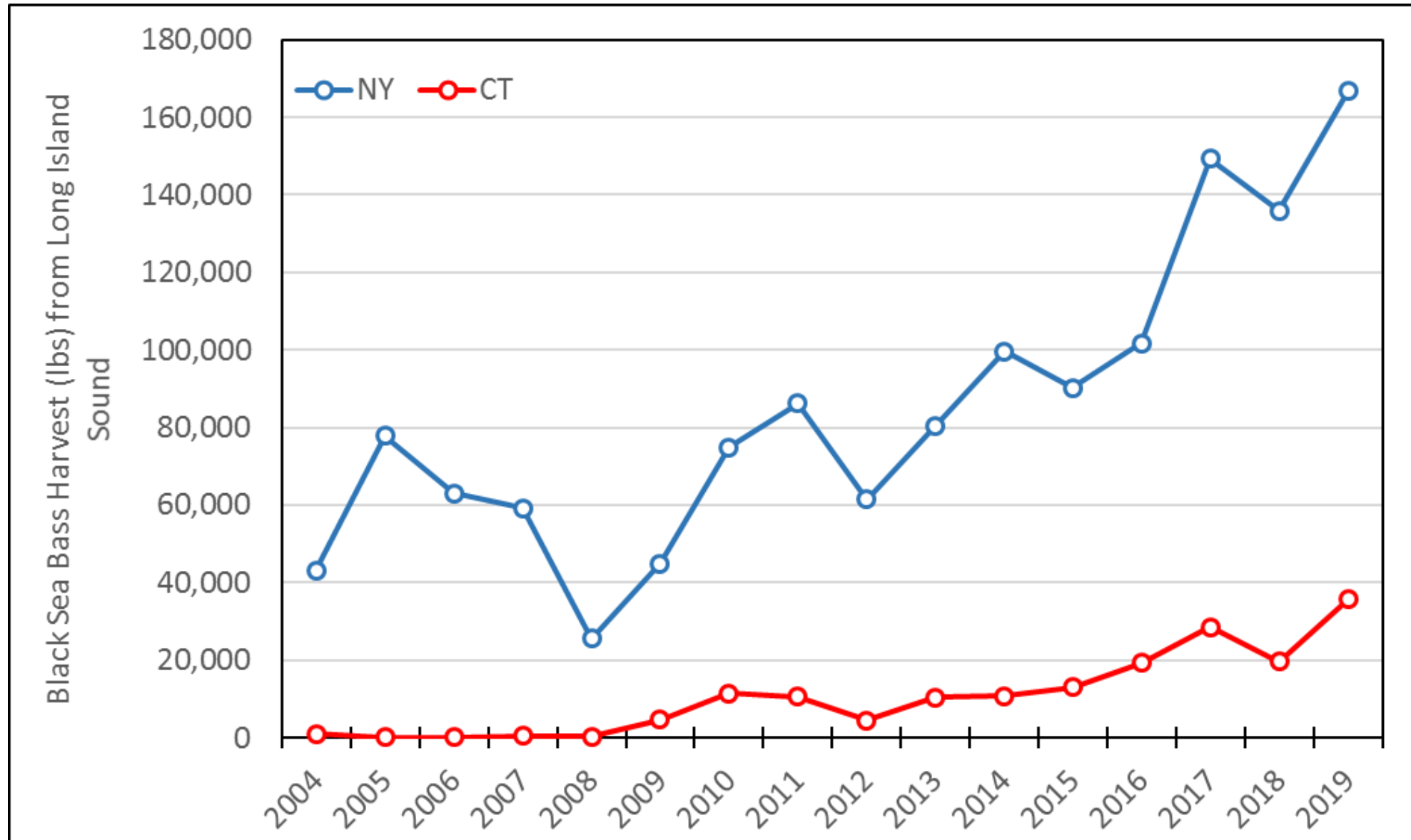


State	Addendum XXXIII Approved Baseline Allocations	New Baseline Allocations	Difference for New Baseline	Resulting 2022 Allocation
ME	0.25%	0.25%	0.00%	0.40%
NH	0.25%	0.25%	0.00%	0.40%
MA	12.77%	12.58%	-0.19%	15.37%
RI	10.81%	10.65%	-0.16%	13.01%
CT	3.00%	3.00%	0.00%	3.66%
NY	7.00%	8.25%	1.25%	10.08%
NJ - N	9.83%	9.77%	-0.06%	19.74%
NJ - S	9.83%	9.77%	-0.06%	
DE	5.00%	5.00%	0.00%	4.09%
MD	10.81%	10.65%	-0.16%	8.71%
VA	19.65%	19.36%	-0.29%	15.83%
NC	10.81%	10.65%	-0.16%	8.71%
<b>Total</b>	<b>100%</b>	<b>100%</b>	<b>0%</b>	<b>100.00%</b>

# Long Island Sound Black Sea Bass Harvest as a Proportion of the Each State's Total Annual Black Sea Bass Harvest



# Commercial Black Sea Bass Harvest from LIS





**NY Appeal 2022 Allocation Changes From Add. 33 (After Reg. Biomass Distribution 85/15)**

<b>STATE</b>	<b>2% to NY</b>	<b>1.5% to NY</b>	<b>1.25% to NY</b>	<b>1.0% to NY</b>
<b>ME</b>	0.0%	0.0%	0.00%	0.00%
<b>NH</b>	0.0%	0.0%	0.00%	0.00%
<b>MA</b>	-0.5%	-0.4%	-0.34%	-0.27%
<b>RI</b>	-0.5%	-0.3%	-0.28%	-0.23%
<b>CT</b>	0.0%	0.0%	-0.03%	-0.02%
<b>NY</b>	2.3%	1.8%	1.47%	1.18%
<b>NJ</b>	-0.6%	-0.4%	-0.37%	-0.30%
<b>DE</b>	0.0%	0.0%	0.01%	0.01%
<b>MD</b>	-0.2%	-0.2%	-0.12%	-0.10%
<b>VA</b>	-0.4%	-0.3%	-0.22%	-0.17%
<b>NC</b>	-0.2%	-0.2%	-0.12%	-0.10%

*1% = 64,700 Pounds Assuming 2022 Commercial Quota = 6.47 Million Pounds*

State	Amdmt 13	Add. 33		2% to NY		1.5% to NY		1.25% to NY		1.0% to NY	
		Baseline	2022	Baseline	2022	Baseline	2022	Baseline	2022	Baseline	2022
ME	0.50	0.25%	0.40%	0.25%	0.40%	0.25%	0.40%	0.25%	0.40%	0.25%	0.40%
NH	0.50	0.25%	0.40%	0.25%	0.40%	0.25%	0.40%	0.25%	0.40%	0.25%	0.40%
MA	13.00	12.77%	15.71%	12.47%	15.17%	12.55%	15.31%	12.58%	15.37%	12.62%	15.44%
RI	11.00	10.81%	13.29%	10.55%	12.84%	10.62%	12.95%	10.65%	13.01%	10.68%	13.06%
CT	1.00	3.00%	3.69%	3.00%	3.65%	3.00%	3.66%	3.00%	3.66%	3.00%	3.67%
NY	7.00	7.00%	8.61%	9.00%	10.95%	8.50%	10.37%	8.25%	10.08%	8.00%	9.79%
NJ	20.00	19.66%	20.11%	19.18%	19.52%	19.30%	19.67%	19.36%	19.74%	19.42%	19.81%
DE	5.00	9.83%	4.08%	5.00%	4.09%	5.00%	4.09%	5.00%	4.09%	5.00%	4.09%
MD	11.00	5.00%	8.83%	10.55%	8.64%	10.62%	8.68%	10.65%	8.71%	10.68%	8.73%
VA	20.00	19.65%	16.05%	19.19%	15.70%	19.30%	15.79%	19.36%	15.83%	19.42%	15.88%
NC	11.00	10.81%	8.83%	10.55%	8.64%	10.62%	8.68%	10.65%	8.71%	10.68%	8.73%