



# Habitat Committee Report

Presentation to ASMFC Policy Board

October 31<sup>st</sup>, 2019

# Fall In-Person Meeting



- Met yesterday (Wednesday)
- Discussed current fish habitat assessments underway in the Atlantic (ACFHP and NRHA)
- ACFHP update
- Worked on Fish Habitats of Concern designations
- Discussed possibility of developing SAV monitoring protocols
- Reviewed progress on:
  - Habitat Hotline
  - Acoustic Impacts to Fish Habitat
  - Fish Habitats of Concern

# Aquaculture Impacts to Fish Habitat



- Habitat Committee has been working on various iterations of this document since 2014
- Based on survey results from the spring, tailored the document in the summer and fall
- Ready for approval – focusing on text and not formatting/layout

# Aquaculture Impacts to Fish Habitat



- Sections on:
  - Effects of aquaculture on habitat
    - Water quality
    - Sediment
    - Populations and communities
  - Common practices
    - Tidal water mariculture
    - Land-based mariculture
  - Siting considerations
    - Minimizing user conflicts
    - Protecting habitats
    - Carrying capacity

# Aquaculture Impacts to Fish Habitat



- Sections on (con't):
  - Conclusions
  - Common practices by state (table)
  - Resources for BMPs
  - Policy Guidance
  - Links to state-specific permitting and leasing information
  - References



# Report to the Atlantic States Marine Fisheries Commission

ISFMP Policy Board

October 31<sup>st</sup>, 2019

# Steering Committee Meeting



- Met Monday and Tuesday
  - Confirmed FY20 project recommendations
  - Update on conservation mapping projects
  - Developed new Action Plan
  - Discussed outreach and communications initiatives
  - Reviewed funding initiatives for new Business Plan
  - Discussed status of National Fish Habitat Conservation Through Partnerships Act

# FY2020 NFHP-USFWS Projects



- Received 13 applications (2<sup>nd</sup> highest)
- Seven states (North, Mid-, and South Atlantic)
- Seven passage projects, six benthic habitat projects (tidal vegetation, seagrass, shellfish beds)
- Will be recommending six to the USFWS for funding (recommendation deadline January 10<sup>th</sup>, 2020)



# 2020 – 2021 Action Plan



- Based on 2017 – 2021 Conservation Strategic Plan
- Highlights include:
  - Compiling BMPs affecting our priority habitats
  - Sharing the importance of water quality on human and fish health
  - Developing a methodology for using our habitat assessments
  - Developing a fundraising strategy

# Project Endorsements



## Pamlico Sound, NC

- Swan Island Oyster Sanctuary
- Led by NC DEQ-DMF and NCCF
- Part of the long-term management and restoration strategy in the Jean Preston Oyster Sanctuary network.
- 60 acres total of harvest-protected area containing nearly 40 acres of developed oyster habitat

# Project Endorsements



## Pamlico Sound, NC

- Constructed of limestone and granite
- Estimated to support nearly 50 million oysters
- Intended to restore oyster and finfish populations through habitat availability, seed production, and water quality improvements
- Federal, state, NGO, and industry collaboration

# NFHP – AFS Film Festival



## 2019 American Fisheries Society Meeting

- Reno, NV Sept. 29 – Oct. 3<sup>rd</sup>
- Over 80 films on fish habitat conservation
- ACFHP helps during the festival
- Some films from ACFHP region, including some endorsed projects
- When they are uploaded to YouTube, we will share the link



**New vice chair:  
Jessica Coakley, MAFMC  
Same chair: Kent Smith,  
FL FWC**



**ACFHP would like to  
thank ASMFC for your  
continued operational  
support**



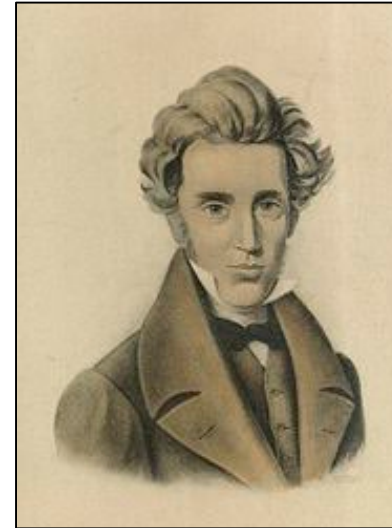
# Management and Science Committee

*ISFMP Policy Board  
New Castle, New Hampshire  
October 31, 2019*

# MSC's Purpose



**Where am I? Who am I? How did I come to be here? What is this thing called the world? How did I come into the world? Why was I not consulted? And If I am compelled to take part in it, Where is the director? I want to see him.**



*Kierkegaard, 1843*

An oversight committee providing advice to the Commissioners on issues spanning coastal fisheries science and fisheries management

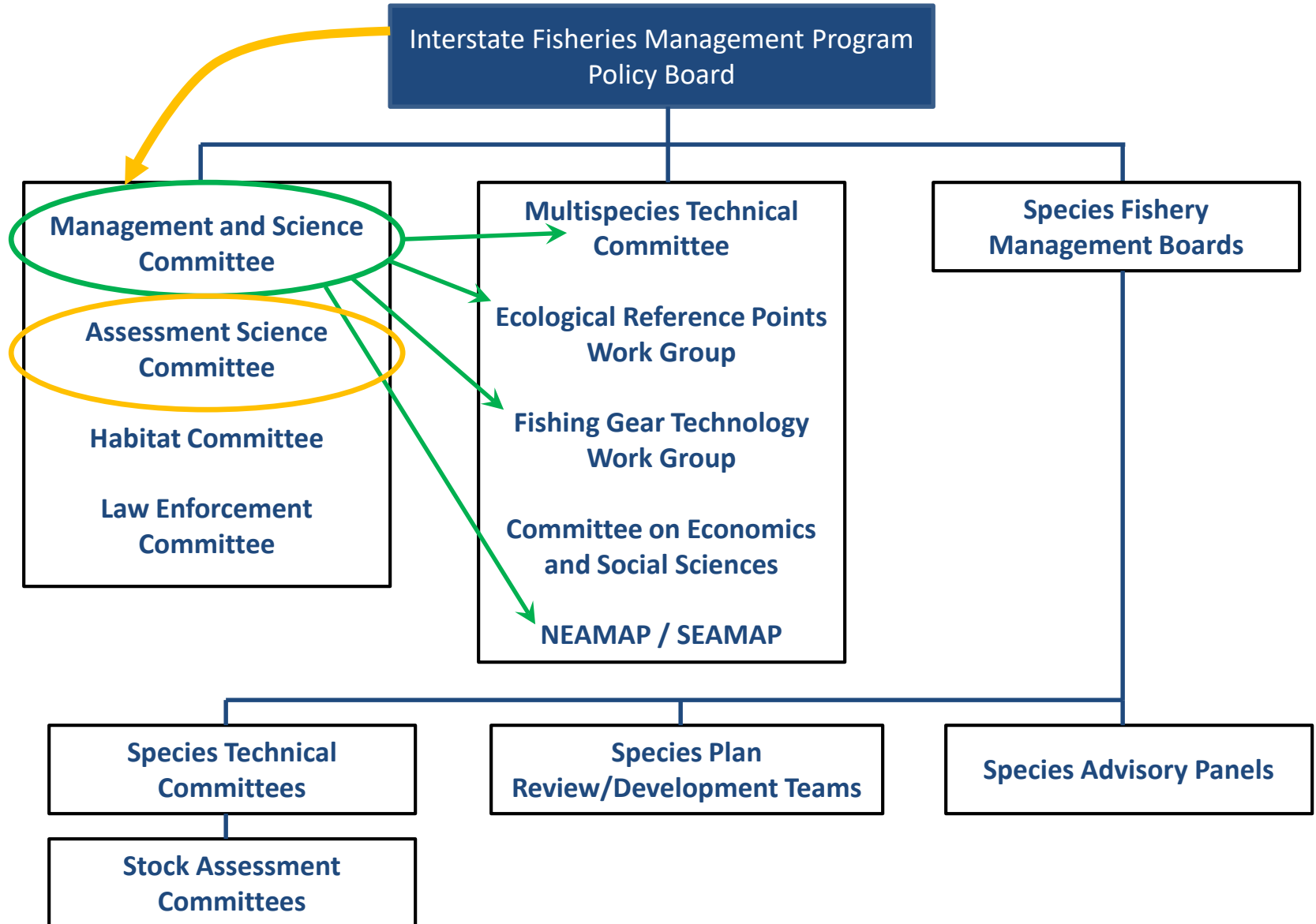


# Roles and Responsibilities



1. Serve as the senior review body for the Commission, Executive Committee, and ISFMP Policy Board
2. **Evaluate and provide advice on cross-species issues**
3. Review and provide advice on individual species issues, as requested by the Policy Board
4. Coordinate technical and scientific workshops
5. **Provide oversight to ASMFC peer review processes**
6. Evaluate the state of science regarding species interactions and provide guidance to fisheries managers on **multispecies and ecosystem issues**, with a focus on modifying the single-species approach to FMPs and/or stock assessments

# MSC in ASMFC Process



# Past Projects

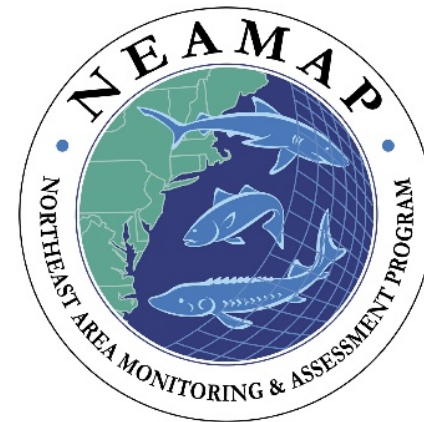
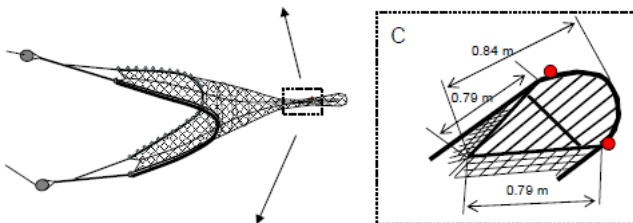
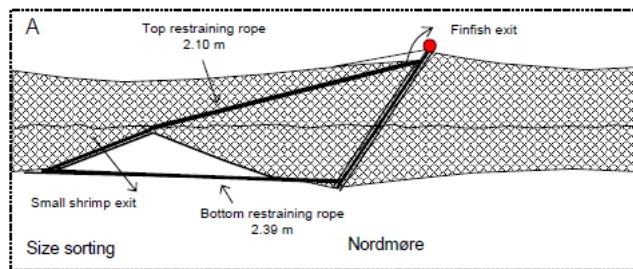


Atlantic States Marine Fisheries Commission

*Research Priorities and Recommendations to Support Interjurisdictional Fisheries Management*



April 2018

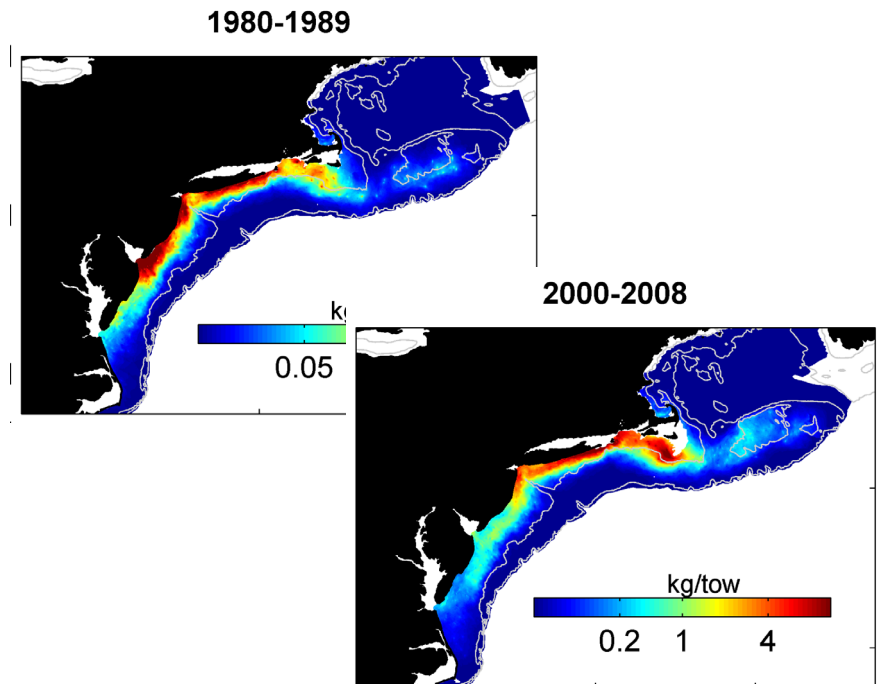
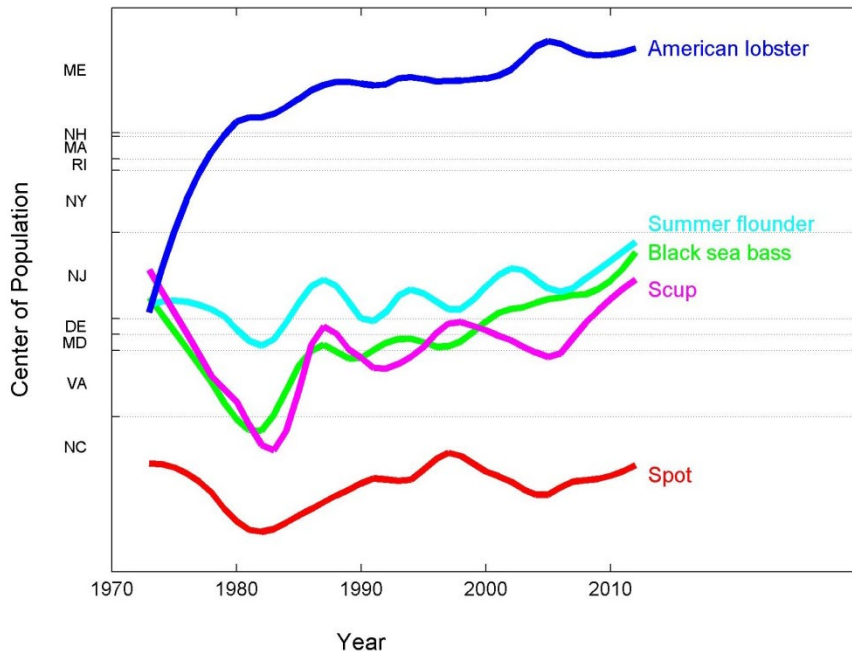


# Past Projects



## Climate Change and Fisheries Issues

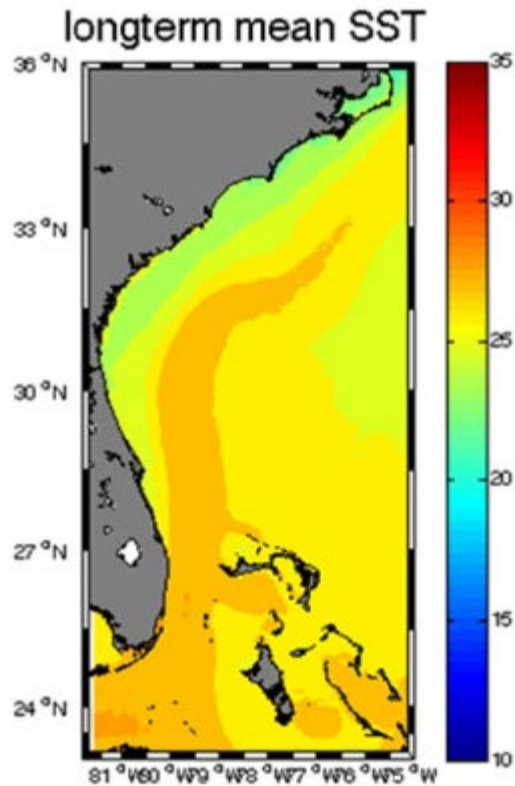
- Completed Policy Board task on 4 stocks
- Contributed to ASMFC Climate Science and Fisheries Management Strategies



# MSC Meeting Summary



## NMFS South Atlantic Climate Vulnerability Assessment



Biological Sensitivity	Very High		Ocean Quahog Northern Quahog	Atlantic Salmon Bay Scallop
	High		Atlantic Halibut Atlantic Sea Scallop Dusky Shark Porbeagle Thorny Skate Tilefish Atlantic Surfclam	Ocean Pout Atlantic Wolffish Witch Flounder Northern Shrimp Green Sea Urchin Sand Tiger Cusk
	Moderate		Sand Lances Barndoor Skate Acadian Redfish Smooth Skate American Lobster Atlantic Hagfish	Atlantic Cod White Hake Atlantic Mackerel Rosette Skate Cancer Crabs Pollock
	Low		Butterfish Longfin Inshore Squid Silver Hake Atlantic Saury Spiny Dogfish Winter Skate Northern Shortfin Squid Bluefish Deep-sea Red Crab Red Hake Offshore Hake	Little Skate Clearnose Skate Smooth Dogfish Anchovies Monkfish Haddock Atlantic Herring Windowpane Yellowtail Flounder American Plaice
				American Shad Blueback Herring Eastern Oyster Hickory Shad Shortnose Sturgeon Alewife Rainbow Smelt Atlantic Sturgeon Winter Flounder
				Bloodworm Blue Mussel Horseshoe Crab Tautog Striped Bass Channeled Whelk Knobbed Whelk Softshell Clam Blue Crab
				Red Drum American Eel Conger Eel Black Sea Bass Spotted Seatrout
				Summer Flounder Spanish Mackerel Atlantic Croaker Spot Northern Kingfish Atlantic Menhaden Weakfish Scup
		Low Moderate	High	Very High
				Climate Exposure

# MSC Meeting Summary



## USGS Scientific Support to ASMFC

- Development of an American eel habitat model to support stock assessment
- Improving downstream passage for American eels
- Eel migration/chemical attractants passage study
- Horseshoe crab survival analysis USFWS tagging data
- Updating the ASMFC Horseshoe Crab Adaptive Resource Management (ARM) Model
- Characterize seasonal distribution, abundance, and movement patterns and diets for invasive catfish

# MSC Meeting Summary



## Wind Energy and Fisheries discussion

- MSC role in gathering science on wind development effects on fisheries resources
- Supporting pre- and post-construction monitoring, including utilizing turbines as monitoring platforms
- **Consult Policy Board on need for separate ASMFC committee of state, federal staff working on wind issues vs. state direct participation in ROSA and/or RODA**



# What's on the MSC Horizon?



- Management Strategy Evaluations (MSE) tool and candidate stocks (drum, shad, striped bass, menhaden)
- Establish clear stock status definitions for Performance of the Stocks annual review
- ASMFC Research Priorities – proposal development
- Advise ERP WG and Boards on next steps with EBFM\*
- Explore new approaches to soliciting public input to fisheries management process





# **Assessment Science Committee Report to the ISFMP Policy Board**

**October 2019**

# ASC Update



The Assessment Science Committee met on August 29<sup>th</sup>, 2019, to address several agenda items, including receiving updates from the Red Drum Subcommittee, discussing stock assessment training workshops, and reviewing the ASMFC stock assessment schedule.

# Proposed Stock Assessment Schedule



Species	2012	2013	2014	2015	2016	2017	2018	2019	2020	2021	2022
American Eel	ASMFC					Update					x
American Shad									ASMFC		
American Lobster				ASMFC					ASMFC		
Atlantic Croaker						ASMFC					x
Atlantic Menhaden	Update		SEDAR			Update		SEDAR			Update
Atl. Menhaden ERPs	Update		Update					SEDAR			Update
Atlantic Sea Herring	SARC 54			Update			SARC-Spring		Management		Management
Atlantic Striped Bass		SARC 57		Update	Update		SARC-Fall			Update	
Atlantic Sturgeon						ASMFC					x
Black Drum			ASMFC								x
Black Sea Bass	Update	Update	Update	Update	SARC- Fall	Update	Update	Operational*		Management	SARC - Fall
Bluefish	Update	Update	Update	SARC-Spring	Update	Update	Update	Operational*		Management	SARC - Fall
Coastal Sharks		SEDAR		SEDAR	SEDAR	SEDAR			SEDAR		SEDAR
Cobia								SEDAR			
Horseshoe Crab		Update						ASMFC			
Jonah Crab											
Northern Shrimp	Update	Update	SARC-Spring	Update	Update	Update	ASMFC			Update	
Red Drum				SEDAR							SEDAR
River Herring	ASMFC					Update					x
Scup	Update	Update	Update	SARC-Spring	Update	Update	Update	Operational*		Management	
Spanish Mackerel	SEDAR 28									Operational	
Spiny Dogfish	Update	Update	Update	Update	Update	Update	Update				SARC - Spring
Spot						ASMFC					x
Spotted Seatrout				VA/NC	FL						
Summer Flounder	Update	SARC 57	Update	Update	Update	Update	SARC-Fall			Management	
Tautog					ASMFC					Update	
Weakfish					ASMFC			Update			
Winter Flounder			Update	Update		Update			Management		Management

SEDAR Peer Review  
 ASMFC Peer Review  
 Fall SARC Review (November) (Research Track)

Spring SARC Review (June) (Research Track)  
 x = 5 year trigger date or potential review  
 Completed

# Northeast Region Assessment Changes



- Changes were made to Northeast Region assessment types and frequency to match assessment demands with assessment capacity
- Two main types of assessments:
  - Management track: assessments allowing small to moderate changes (similar to assessment updates)
  - Research track: assessments open to all changes (similar to benchmark assessments); also includes Research Topics

# Proposed Schedule Changes



- Assessment triggers were added in 2022 for **American eel, Atlantic croaker, Atlantic sturgeon, river herring & spot**
- **American shad:** assessment shifted from 2019 to 2020
- **Atlantic menhaden:** update added in 2022
- **Atlantic menhaden ERPs:** update added in 2022 to match the single-species update schedule
- **Atlantic herring:** management track assessments added in 2020 & 2022

# Proposed Schedule Changes



- **Atlantic striped bass:** update shifted from 2020 to 2021
- **Black drum:** assessment trigger shifted from 2019 to 2022
- **Black sea bass:** 2020 update removed; 2021 management track assessment added; 2022 research track assessment added (SARC)
- **Bluefish:** 2020 assessment trigger removed; 2021 management track assessment added; 2022 research track assessment added (SARC)

# Proposed Schedule Changes



- **Coastal sharks:** 2020 Atlantic blacktip shark & 2022 hammerhead sharks assessments added (SEDAR)
- **Jonah crab:** added to the species list
- **Northern shrimp:** 2019 & 2020 updates removed
- **Red drum:** 2022 benchmark assessment added (SEDAR)
- **Scup:** management track assessment added in 2021

# Proposed Schedule Changes



- **Spanish mackerel:** 2020 benchmark assessment removed; 2021 operational assessment (SEDAR) added
- **Spiny dogfish:** 2019 & 2020 updates removed; 2022 research track assessment added (SARC)
- **Summer flounder:** 2019 & 2020 updates removed; 2021 management track assessment added
- **Winter flounder:** 2020 & 2022 management track assessments added



# Proposed Stock Assessment Schedule



Species	2012	2013	2014	2015	2016	2017	2018	2019	2020	2021	2022
American Eel	ASMFC					Update					x
American Shad									ASMFC		
American Lobster				ASMFC					ASMFC		
Atlantic Croaker						ASMFC					x
Atlantic Menhaden	Update		SEDAR			Update		SEDAR			Update
Atl. Menhaden ERPs	Update		Update					SEDAR			Update
Atlantic Sea Herring	SARC 54			Update			SARC-Spring		Management		Management
Atlantic Striped Bass		SARC 57		Update	Update		SARC-Fall			Update	
Atlantic Sturgeon						ASMFC					x
Black Drum			ASMFC								x
Black Sea Bass	Update	Update	Update	Update	SARC- Fall	Update	Update	Operational*		Management	SARC - Fall
Bluefish	Update	Update	Update	SARC-Spring	Update	Update	Update	Operational*		Management	SARC - Fall
Coastal Sharks		SEDAR		SEDAR	SEDAR	SEDAR			SEDAR		SEDAR
Cobia								SEDAR			
Horseshoe Crab		Update						ASMFC			
Jonah Crab											
Northern Shrimp	Update	Update	SARC-Spring	Update	Update	Update	ASMFC			Update	
Red Drum				SEDAR							SEDAR
River Herring	ASMFC					Update					x
Scup	Update	Update	Update	SARC-Spring	Update	Update	Update	Operational*		Management	
Spanish Mackerel	SEDAR 28									Operational	
Spiny Dogfish	Update	Update	Update	Update	Update	Update	Update				SARC - Spring
Spot						ASMFC					x
Spotted Seatrout				VA/NC	FL						
Summer Flounder	Update	SARC 57	Update	Update	Update	Update	SARC-Fall			Management	
Tautog					ASMFC					Update	
Weakfish					ASMFC			Update			
Winter Flounder			Update	Update		Update			Management		Management

SEDAR Peer Review  
 ASMFC Peer Review  
 Fall SARC Review (November) (Research Track)

Spring SARC Review (June) (Research Track)  
 x = 5 year trigger date or potential review  
 Completed