



Atlantic Herring Area 1A

Fishery Performance + Alternative Management Measures

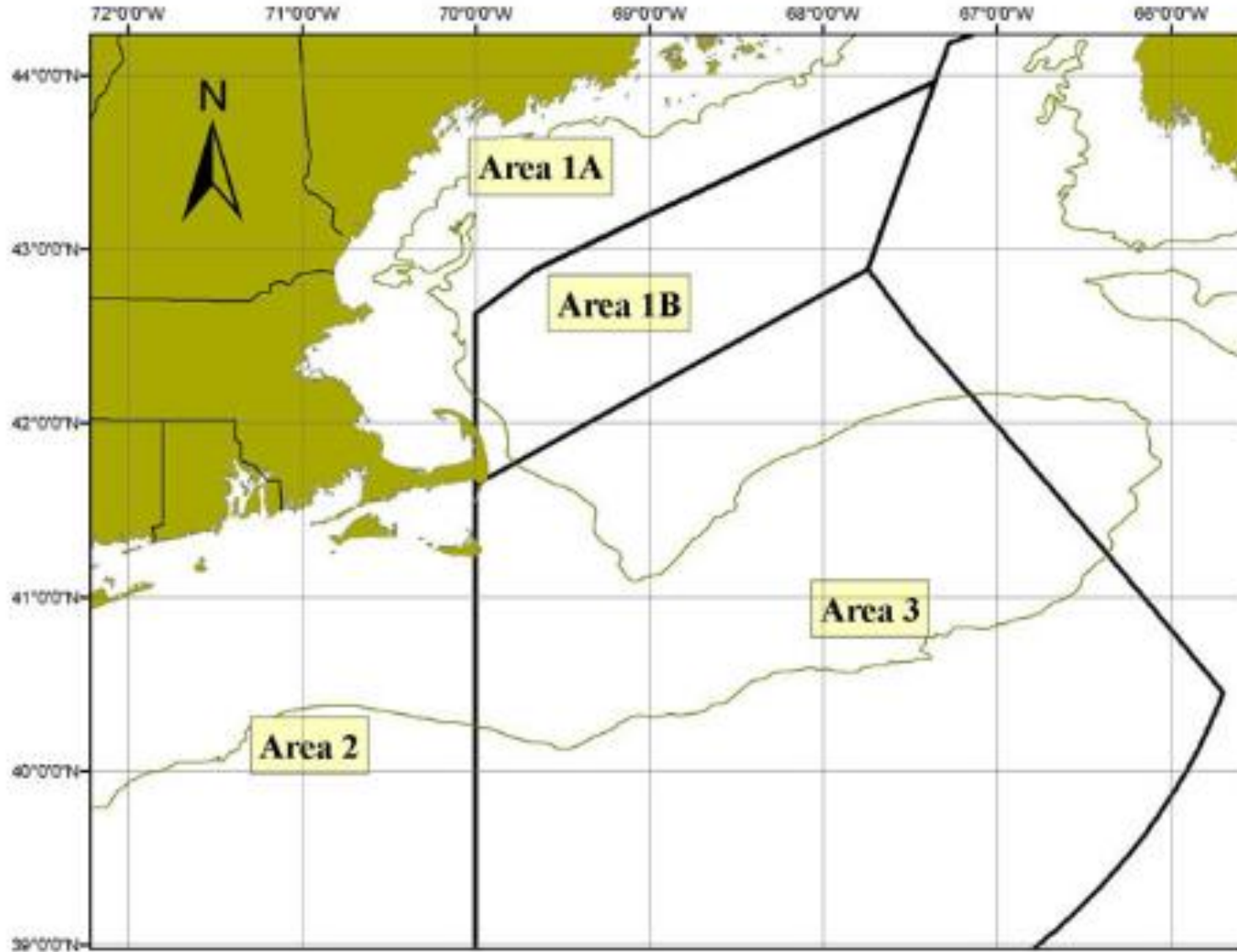
Presented to ASMFC Atlantic Herring Section
October 27, 2016

Overview



- This presentation summarizes the white paper that was included in briefing materials.
- Focal points:
 - Inshore Gulf of Maine (Area 1A)
 - 2015 and 2016 fishing seasons
 - Effort in Trimester 2 (June – September)

Management Areas



Area 1A Effort Controls



Seasonal Quotas (2016)

| | |
|----------------------------|-------|
| Trimester 1 (Jan-May) | 0% |
| Trimester 2 (June-Sept) | 72.8% |
| Trimester 3 (Oct-Dec) | 27.2% |

Days Out of the Fishery (2016)

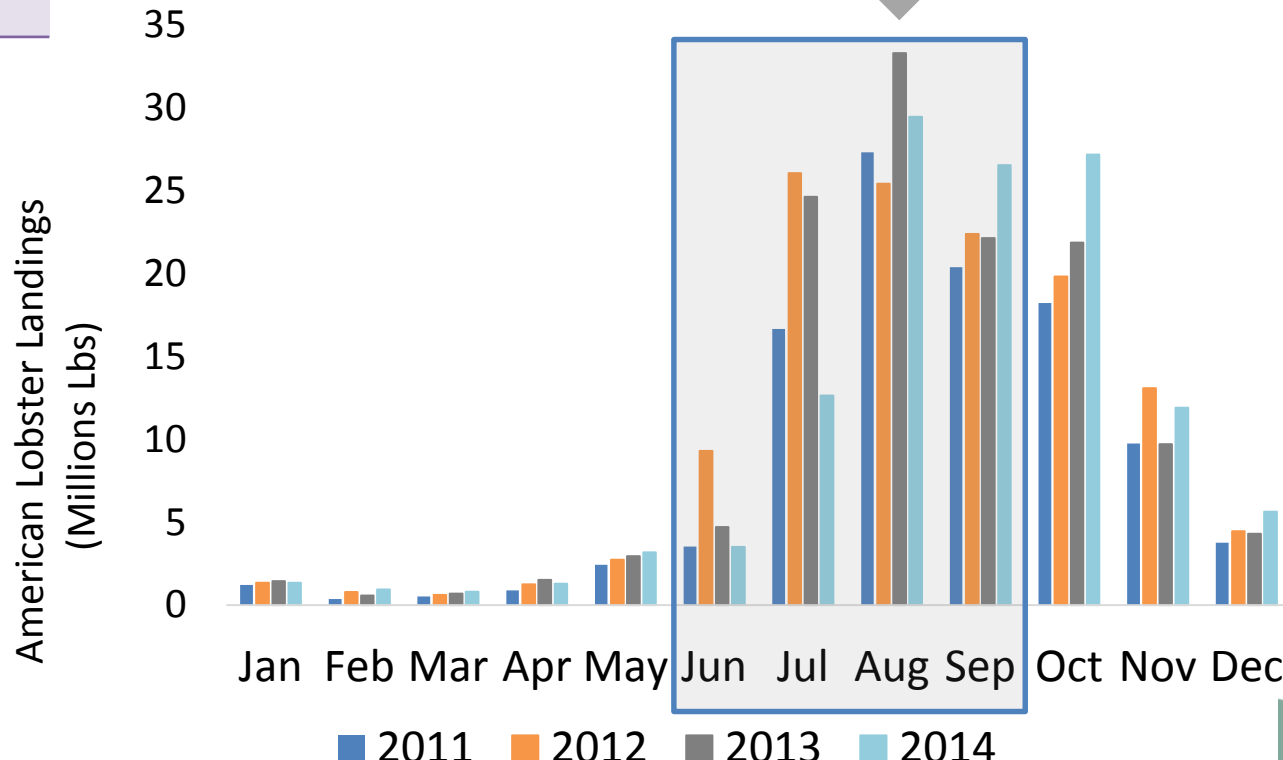
| Trimester 2 | Landing Days/Week |
|------------------------------------|-------------------|
| June 1 – 30 | 3 |
| July 1-14 | 4 |
| July 15-23 | 5 |
| July 24 – Sept 17 (reactionary) | 2 |
| Sept 18 – Sept 30 (reactionary) | 0 |

Seasonal Quotas

Seasonal Quotas (2016)

| | |
|-------------|-------|
| Trimester 1 | 0% |
| Trimester 2 | 72.8% |
| Trimester 3 | 27.2% |

Monthly landings of American lobsters in Maine (2011-2014)



Days Out of the Fishery – Landing Days per Week

| Year | Trimester 2 | Landing Days | Comments |
|------|--|--------------|--|
| 2011 | June 1 – June 26 | 2 | 3 in-season planned changes; 1 reactionary |
| 2011 | June 27 – July 17 | 3 | |
| 2011 | July 18 – Aug 7 | 4 | |
| 2011 | Aug 8 – Sept 30 (<i>reactionary</i>) | 7 | |
| 2012 | June 1 - 30 | 2 | 3 in-season planned changes |
| 2012 | July 1 – 14 | 4 | |
| 2012 | July 15 – Sept 30 | 7 | |
| 2013 | June 1 – Sept 30 | 7 | 1 reactionary in-season change |
| 2013 | Sept 9 – 30 (<i>reactionary</i>) | 0 | |
| 2014 | June 1 – July 6 | 5 | 1 reactionary in-season change |
| 2014 | July 7 – Sept 30 (<i>reactionary</i>) | 7 | |
| 2015 | June 1- July 5 | 5 | 2 in-season planned changes; 1 reactionary |
| 2015 | July 6 – Aug 27 | 7 | |
| 2015 | Aug 28 – Sept 30 (<i>reactionary</i>) | 0 | |
| 2016 | June 1 – 30 | 3 | 3 in-season planned changes; 2 reactionary |
| 2016 | July 1-14 | 4 | |
| 2016 | July 15-23 | 5 | |
| 2016 | July 24 – Sept 17 (<i>reactionary</i>) | 2 | |
| 2016 | Sept 18 – Sept 30 (<i>reactionary</i>) | 0 | |

2015 Fishing Season



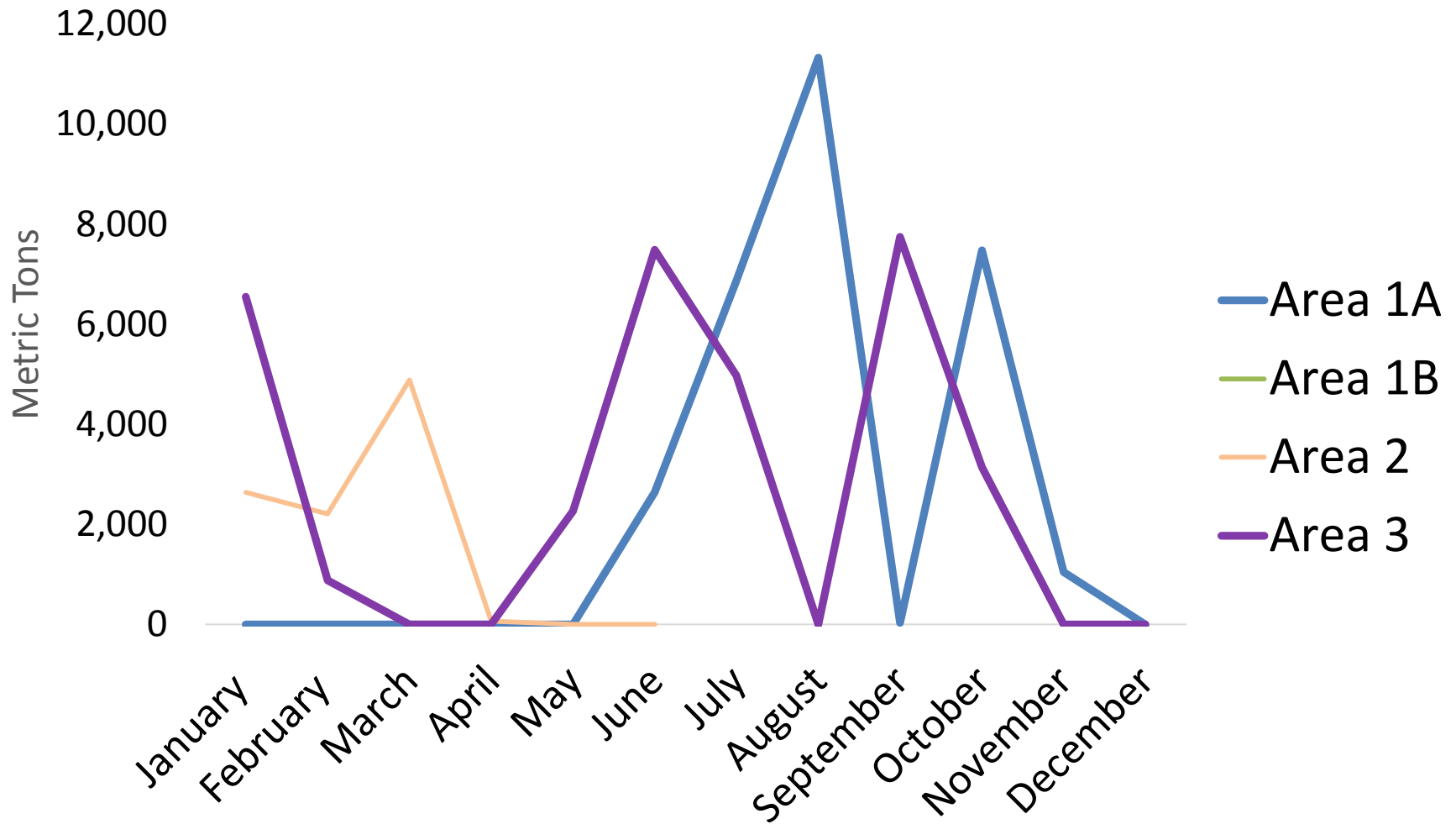
Concern: In Area 1A the rate of landings accelerated in August such that the seasonal quota was exceeded on August 28; triggering a zero landing day scenario for all of September.

| August 2015 | | | | | | | 1 |
|-------------|----|--------|----|----|----|----|---|
| 2 | 3 | 4 | 5 | 6 | 7 | 8 | |
| 9 | 10 | 11 | 12 | 13 | 14 | 15 | |
| 16 | 17 | 18 | 19 | 20 | 21 | 22 | |
| 23 | 24 | 25 | 26 | 27 | 28 | 29 | |
| 30 | 31 | Notes: | | | | | |

| September 2015 | | | | | | |
|----------------|----|-------|----|--------|----|----|
| | | 1 | 2 | 3 | 4 | 5 |
| | | ————— | | | | |
| 6 | 7 | 8 | 9 | 10 | 11 | 12 |
| ————— | | | | | | |
| 13 | 14 | 15 | 16 | 17 | 18 | 19 |
| ————— | | | | | | |
| 20 | 21 | 22 | 23 | 24 | 25 | 26 |
| ————— | | | | | | |
| 27 | 28 | 29 | 30 | Notes: | | |
| ————— | | | | | | |

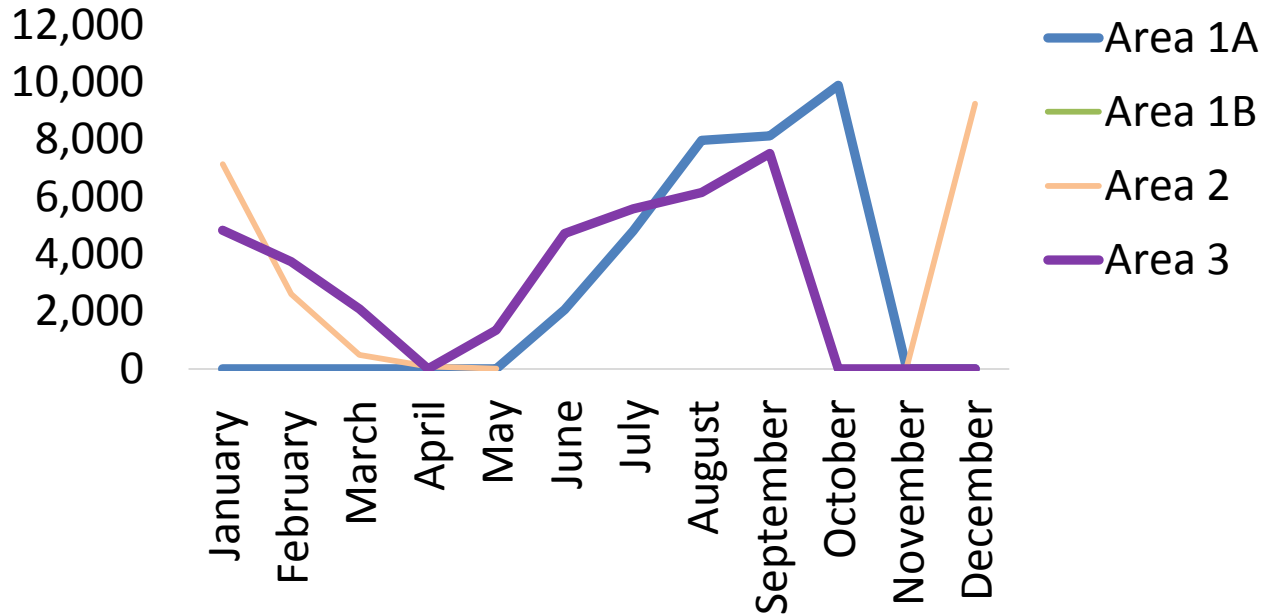
————— Zero landings days available

2015 Monthly Atlantic Herring Landings by Management Area. Area 1A and 3 were active in the summer/fall of 2015.

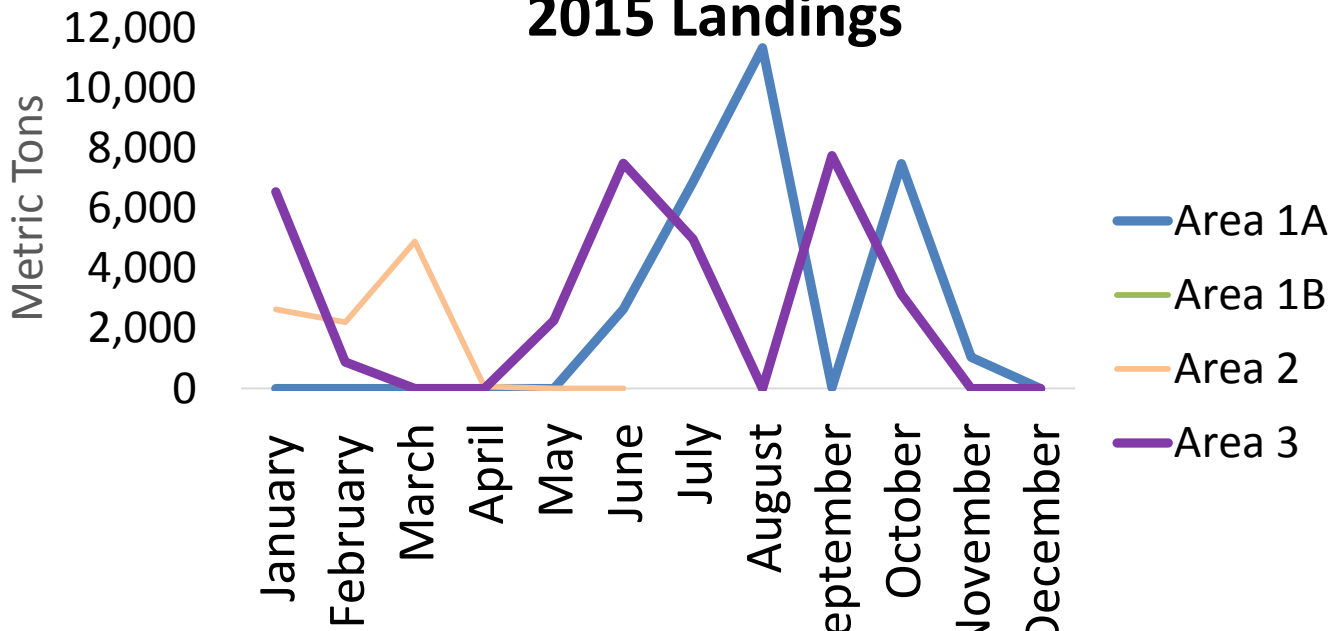


Source: NMFS. This is preliminary landings data, confidential data has been omitted

2014 Landings



2015 Landings



2016 Fishing Season

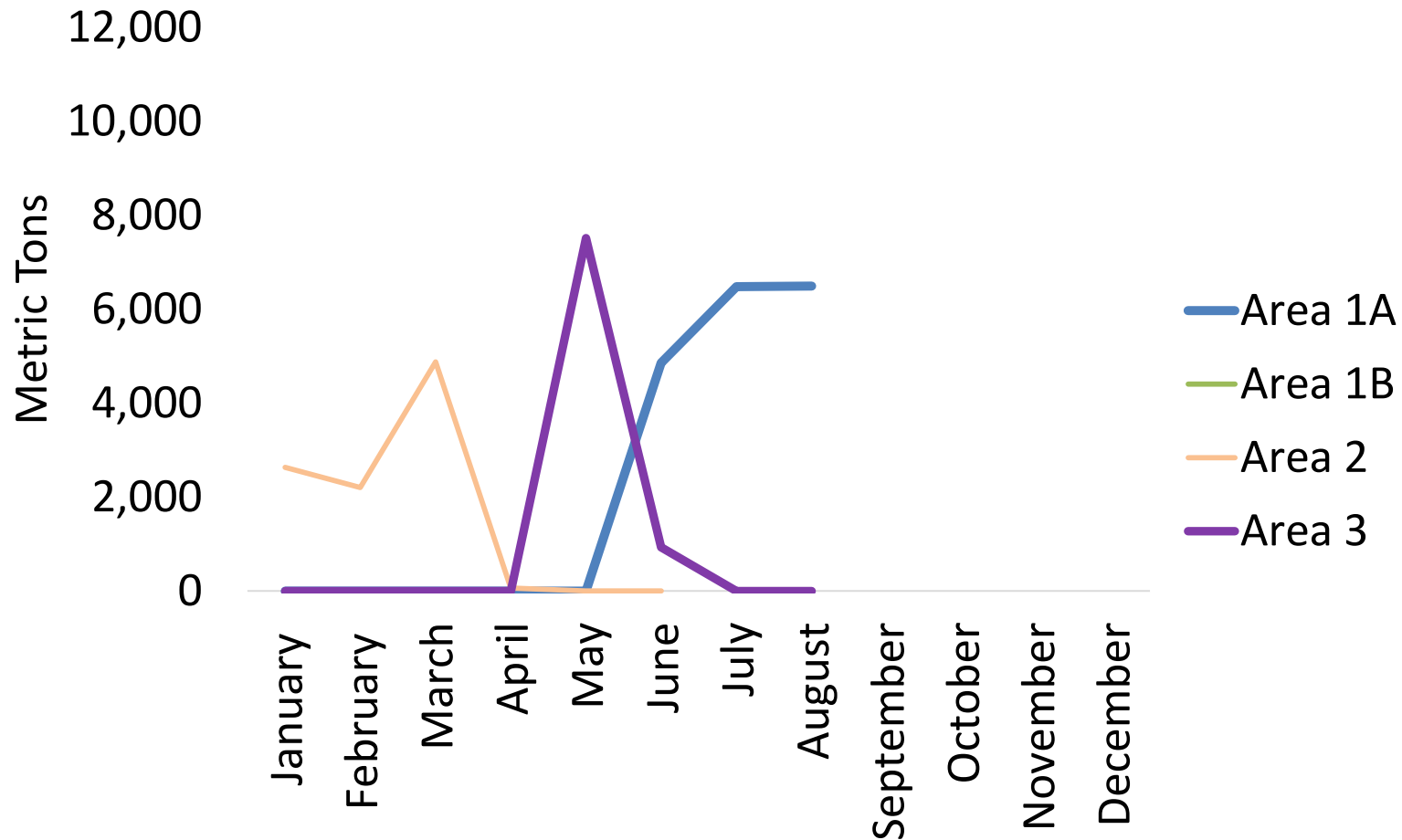


Concern: Above-average landings at the start of the season, and thereafter, led to emergency restrictions for vessels landing in Maine (on behalf of Maine DMR), which were more restrictive than those of the Commission.

| September 2016 | | | | 1 | 2 | 3 |
|-----------------------|----|----|----|----|----|----|
| 4 | 5 | 6 | 7 | 8 | 9 | 10 |
| 11 | 12 | 13 | 14 | 15 | 16 | 17 |
| 18 | 19 | 20 | 21 | 22 | 23 | 24 |
| 25 | 26 | 27 | 28 | 29 | 30 | |

 Zero landings days available

2016 Monthly Atlantic Herring Landings by Management Area. Area 1A and 3 were active in the summer/fall of 2015.



Source: NMFS. This is preliminary landings data, confidential data has been omitted

Maine DMR Emergency Rule



The final measures, effective July 9, 2016, included:

- Weekly landing limit of 600,000 pounds (15 trucks)
- 3 consecutive fishing days
- 2 consecutive landing days
- Harvester vessels are limited to making one landing per 24-hour period
- Harvester vessels are limited to making at-sea transfers to only one carrier per week.
- All carrier vessels landing herring are limited to receiving at-sea transfers from one vessels per week.

DMR's measures only applied to vessels landing in Maine.

Management Alternatives



1. Modify the Area 1A in-season allocation.
2. Modify the Days Out program such that landing days are no longer consecutive days.
3. Modify the Days Out program to restrict fishing days, in addition to landing days.
4. Modify the Days Out program to create a weekly landing limit (pounds & trucks). In addition, harvester vessels are limited to making at-sea transfers to only one carrier per week. All carrier vessels landing herring are limited to receiving at-sea transfers from one vessel per week.
5. Restrict a vessel from operating a vessel using a different gear mid-season in Area 1A.
6. Clarify what it means for states to “agree” on the numbers of days out in the fishery, does this mean consensus or vote? If states, cannot agree then what is the default landing day scenario, 7 landing days?

Management Alternatives (SMBT)



1. Modify the Days Out program such that the small-mesh bottom trawl (SMBT) could have a different allocation of landings days and times that are separate from the purse seine and mid-water trawl fleet landing days.
2. Set-aside a percentage or value of the Area 1A sub-ACL for the SMBT.

Questions





Atlantic Herring Area 1A

Specifications

Presented to ASMFC Atlantic Herring Section
October 27, 2016

Specifications



- At the 2015 Annual Meeting, the Section approved the Area 1A sub-ACL as part of the 2016-2018 Atlantic herring specifications. The Area 1A sub-ACL of 30,300 metric tons (mt) represents 28.9% of the stockwide ACL (104,800 mt).
- Since 2009, the Section has split the Area 1A sub-ACL into trimesters, where 0% is allocated from January 1-May 31, 72.8% is allocated from June 1 – September 30 and 27.2% is allocated from October 1- December 31.

2016 Fishing Season



- 95% of Trimester 2 seasonal quota was harvested
- Area 1A fishery closed on October 18, 2016

Questions

