



# Atlantic Herring Draft Addendum II



Atlantic Herring Management Board

# Timeline

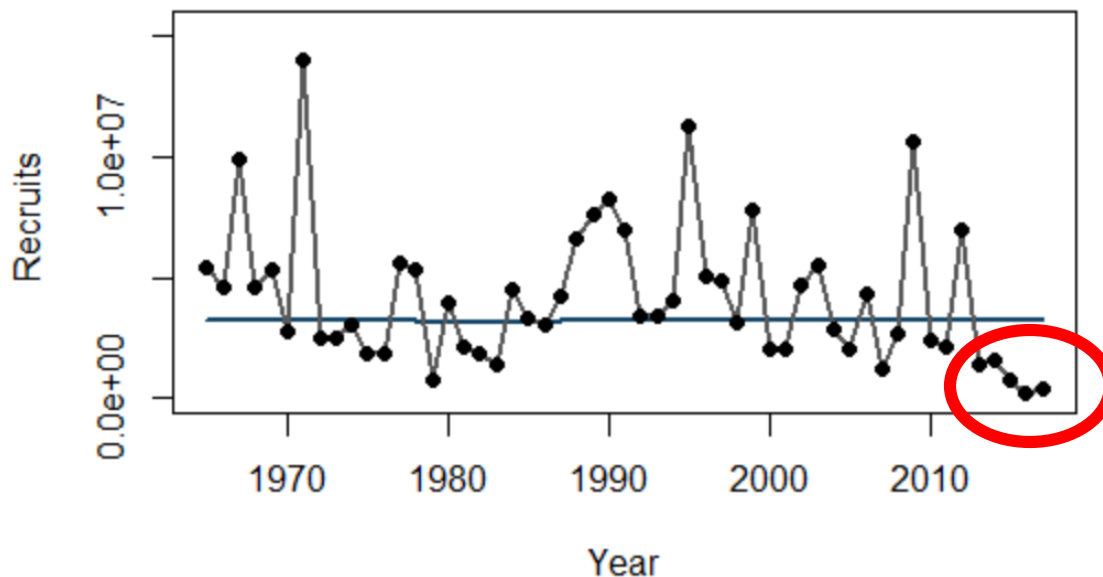


October 2018	Board Initiates Draft Addendum II
November 2018 – January 2019	PDT Develops Draft Addendum II
<b>February 2019</b>	<b>Board Reviews Draft Addendum II and Considers Approving It For Public Comment</b>
March – April 2019	Public Comment Period
May 2019	Board Reviews Public Comment; Final Approval of Addendum II

# Purpose



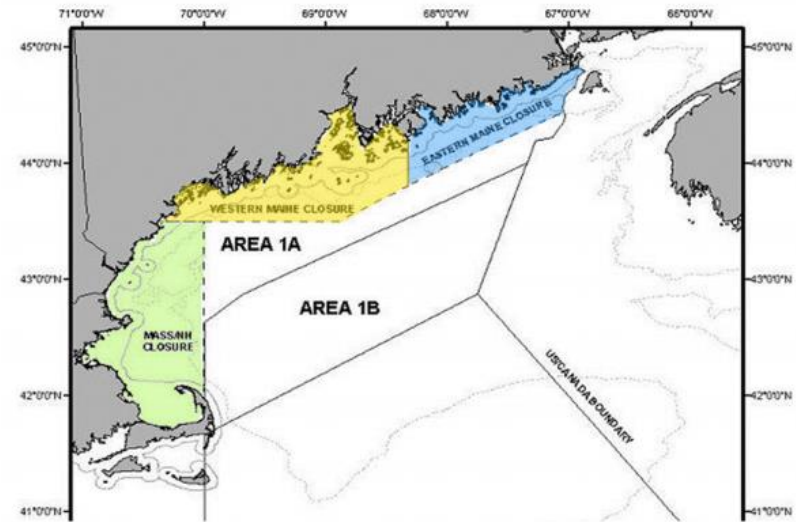
- 2018 Stock Assessment showed reduced levels of recruitment over the last five years
- In response, Board initiated Draft Addendum II to strengthen existing spawning protections in Area 1A
- Addendum should consider measures including the  $GSI_{30}$  trigger value and the closure period length



# Existing Spawning Program



- Closures occur in three areas
- Samples used to forecast timing of spawning by modeling relationship between GSI and date
- Initiation of a spawning closure is determined by a trigger value
- If there are insufficient samples, use a default closure date
- Spawning closure length is 4 weeks but can be extended by 2 weeks if samples indicate a significant number of spawning herring

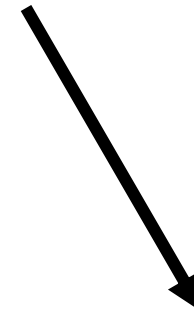
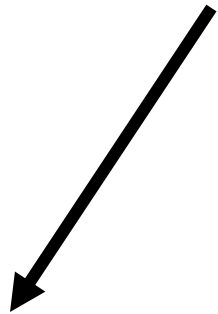


# Addendum II Overview



## 1. Trigger Value

- What is the trigger value used to initiate a closure?



## 3. Re-Closure Protocol

- Should there be a re-closure protocol?
- If yes, what is the threshold that triggers a re-closure?



## 2. Closure Length

- How long is the initial closure?

# Trigger Value



- A higher trigger value closes fishery later and closer to spawning while a lower trigger value closes the fishery earlier to provide protection to maturing fish
- Current trigger value (25) results in spawning closures that start within a few days of the population reaching 25% spawning
- Is initiating a closure when ~25% of population is spawning appropriate?
  - Lowering the trigger value would reduce fishery-spawning interactions
  - Lower trigger value would implement a closure earlier, so may need a longer closure to provide protection throughout spawning season
  - Lower trigger value (and earlier closure) may shorten time available to collect spawning samples

# Closure Length & Re-Closure



- Is current 4 week closure length sufficient?
- In the past three years, MA/NH spawning season lasted 4 weeks, 2.3 weeks, and 4.9 weeks
  - Greater confidence in longer seasons due to higher number of samples in those years
- TC concluded that 4 week closure would likely result in frequent use of re-closure protocol
  - Longer initial closure could increase protection during spawning and simplify closure protocol by removing need for re-closure
  - Longer closure may increase chance of multiple areas being closed at once



# Management Issues and Alternatives



# 1. Trigger Value



<b>Option A: Status Quo</b> <b>(Trigger Value = 25)</b> ~ 25% of population spawning	Eastern Maine	August 28
	Western Maine	October 4
	MA/NH	October 4
<b>Option B: Trigger Value = 25</b> <b>w/ Updated Default Dates</b> ~ 25% of population spawning	Eastern Maine	August 28
	Western Maine	October 1
	MA/NH	October 1
<b>Option C: Trigger Value = 23</b> ~ 20% of population spawning	Eastern Maine	August 28
	Western Maine	September 23
	MA/NH	September 23
<b>Option D: Trigger Value = 22</b> ~ 15% of population spawning	Eastern Maine	August 28
	Western Maine	September 19
	MA/NH	September 19

## 2. Closure Length



**Option A:** Status Quo (4 week initial closure)

**Option B:** 5 week initial closure

**Option C:** 6 week initial closure

**Option D:** 8 week initial closure

# 3. Re-Closure Protocol



## Option A: Re-Closure Protocol

- Spawning closure can be extended for 2 additional weeks if a sample taken from a spawning closure area indicates a significant number of spawn herring
  - Sub-Option 1 (Status quo): A significant number of spawn herring is defined as **25%** or more mature herring
  - Sub-Option 2: A significant number of spawn herring is defined as **20%** or more mature herring
  - Sub-Option 3: A significant number of spawn herring is defined as **15%** or more mature herring

## Option B: No Re-Closure Protocol

- There is no re-closure of a spawning closure.

# Mgmt. Options are Connected



## Table 2

<b>GSI<sub>30</sub> Trigger Value</b>	<b>Approx. % of Spawners in Population When Closure Begins</b>	<b>Avg. Spawning Season Length (2015-2017)</b>	<b>Range of Spawning Season Length</b>
25 (status quo)	25%	3.7 weeks	2.3 – 4.9 weeks
23	20%	4.3 weeks	2.7 – 5.7 weeks
22	15%	5.1 weeks	3.4 – 6.6 weeks

# Questions





# Atlantic Herring Advisory Panel Report



February 5, 2019

# Purpose of AP Meeting



- At Annual Meeting, the Board discussed a motion to initiate an addendum in order to provide greater flexibility when setting the annual quota periods
- The motion was postponed to allow an opportunity for AP review and discussion

*Move to initiate an Addendum which considers providing the Atlantic Herring Board greater flexibility to set annual quota period specifications for the Area 1A fishery. This issue can be included in the addendum initiated regarding the Gulf of Maine herring spawning protections, or it can be a separate document. Task the PDT to expand the quota period options to increase flexibility when distributing Area 1A herring quota. During years in which sub-ACLs are lower, it may be prudent to concentrate harvest during the months of July through September. However, in years of higher sub-ACLs, choose options that would allow for an expansion of harvest to meet the needs of the market.*

# AP Meeting Overview



- The AP met via conference call on January 3<sup>rd</sup>
- Nine AP members participated
  - Mary Beth Tooley (ME)
  - Glenn Robbins (ME)
  - Stephen Weiner (ME)
  - Shawn Joyce (NH)
  - Joseph Jurek (MA)
  - Gerry O'Neill (MA)
  - Patrick Paquette (MA)
  - Beth Casoni (MA)
  - Jeff Kaelin (NJ, Chair)
- Staff reviewed the existing quota period options in Amendment 3, the postponed motion from October 2018, and the quota periods selected by the Board for 2019



# AP Comments on Motion



- 3 AP members did not support the motion
  - Board already has flexibility in setting the Area 1A quota periods and this has resulted in decreased access for MWTs in 2019; Board overstepping its reach in management of a federal species
  - Already enough flexibility in Amendment 3; additional regulations are burdensome on industry
  - No clear reason why this action is being considered given the fishery can meet its goals under Amendment 3. A new addendum would complicate management of the species, increase the regulatory burden on fishermen, and ultimately decrease flexibility in the fishery

# AP Comments on Motion



- 3 AP members supported the motion, although 2 commented that their support was weak
  - Support additional flexibility in Area 1A, particularly when facing low quotas, because the fishery shouldn't be locked into a single management regime. It is important that herring are caught when demand is highest.
  - Support concept of flexibility but would like to see data on herring catches to understand impacts on different gear types
  - Support for motion would be stronger if there was a clear explanation as to why the action is being considered and data to analyze (i.e. landings data from multiple bait species)

# AP Comments on Motion



- One AP member wasn't in favor of additional regulations but did recommend a quota period where 80% is allocated June-September and 20% is allocated October – December
- One AP member didn't feel the data necessary to make a recommendation was available but did note the importance of spreading herring landings throughout the year
- One AP member abstained from saying whether he supported the motion but commented that Atlantic herring is a federal fishery with federal permit holders who could be negatively impacted by the motion

# Comments on 2019 Quota Periods



Several AP members expressed concern about the Board's decision to use bi-monthly quota periods in the 2019 fishery

- Decision made without landings data so the impact of the changes was not evaluated; would have liked an opportunity for AP input
- Access to the fishery by MWTs was negatively impacted
- MA lobster fleet relies on bait caught by MWTs in the fall so changes to the quota periods have broader impacts
- Under the bi-monthly approach, fishery could close every other month which could create chaos

<b>2018 Quota Periods</b>
May – September: 72.8%
October – December: 27.2%
<b>2019 Quota Periods</b>
June: 16.4%
July/August: 40.1%
September/October: 34.0%
November/December: 9.5%

# Questions?

