



# Atlantic Herring Draft Addendum II For Board Review



Atlantic States Marine Fisheries Commission

April 30, 2019

# Presentation Outline

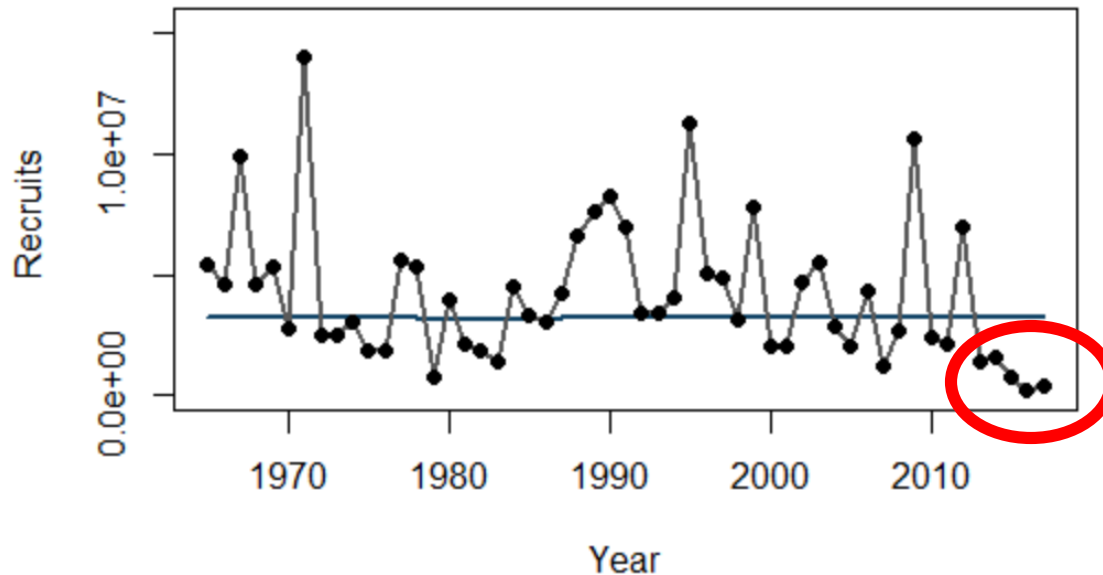


- Statement of the Problem
- Addendum Overview
- Public Comment Summary
- Questions

# Statement of the Problem



- 2018 Stock Assessment showed reduced levels of recruitment over the last five years
- In response, Board initiated Draft Addendum II to strengthen existing spawning protections in Area 1A
- Addendum considers measures including the  $GSI_{30}$  trigger value, the closure period length, and re-closure protocol

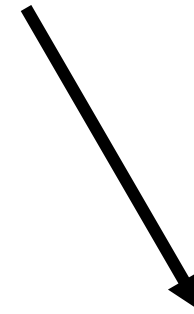
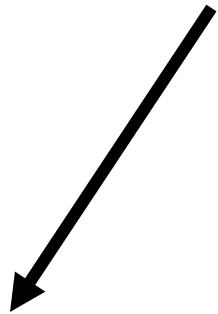


# Addendum II Overview



## 1. Trigger Value

- What is the trigger value used to initiate a closure?



## 3. Re-Closure Protocol

- Should there be a re-closure protocol?
- If yes, what is the threshold that triggers a re-closure?



## 2. Closure Length

- How long is the initial closure?

# Public Comment Overview



- Public hearings held in 3 jurisdictions
  - 21 attendees, nearly all provided comment
  
- Written Comments (9 total)
  - 4 From individual stakeholders
  - 5 Organizations submitted letters



# Management Issues and Alternatives

# 1. Trigger Value



<p><b>Option A: Status Quo</b>  <b>(Trigger Value = 25)</b>                      ~ 25% of population spawning</p>	Eastern Maine	August 28
	Western Maine	October 4
	MA/NH	October 4
<p><b>Option B: Trigger Value = 25</b>  <b>w/ Updated Default Dates</b>                      ~ 25% of population spawning</p>	Eastern Maine	August 28
	Western Maine	October 1
	MA/NH	October 1
<p><b>Option C: Trigger Value = 23</b>                      ~ 20% of population spawning</p>	Eastern Maine	August 28
	Western Maine	September 23
	MA/NH	September 23
<p><b>Option D: Trigger Value = 22</b>                      ~ 15% of population spawning</p>	Eastern Maine	August 28
	Western Maine	September 19
	MA/NH	September 19

# Public Comment



<b>Issue 1: GSI30 Trigger Value</b>				
	<b>Option A</b>	<b>Option B</b>	<b>Option C</b>	<b>Option D</b>
	Status Quo: GSI30 Trigger Value = 25	GSI30 Trigger Value = 25 with Updated Default Dates	GSI30 Trigger Value = 23	GSI30 Trigger Value = 22
Individual	2			1
Organization	2		1	
Hearings				
ME			2	
NH				
MA				1
<b>TOTAL</b>	<b>4</b>	<b>0</b>	<b>3</b>	<b>2</b>

## 2. Closure Length



**Option A:** Status Quo (4 week initial closure)

**Option B:** 5 week initial closure

**Option C:** 6 week initial closure

**Option D:** 8 week initial closure

# Public Comment



## Issue 2: Spawning Closure Length

	<b>Option A</b>	<b>Option B</b>	<b>Option C</b>	<b>Option D</b>
	Status Quo: 4 Week Initial Closure	5 Week Initial Closure	6 Week Initial Closure	8 Week Initial Closure
Individual	2		1	
Organization	2	1		
Hearings				
ME	1	1		
NH				
MA				1
<b>TOTAL</b>	<b>5</b>	<b>2</b>	<b>1</b>	<b>1</b>

# 3. Re-Closure Protocol



## Option A: Re-Closure Protocol

- Spawning closure can be extended for 2 additional weeks if a sample taken from a spawning closure area indicates a significant number of spawn herring
  - Sub-Option 1 (Status quo): A significant number of spawn herring is defined as **25%** or more mature herring
  - Sub-Option 2: A significant number of spawn herring is defined as **20%** or more mature herring
  - Sub-Option 3: A significant number of spawn herring is defined as **15%** or more mature herring

## Option B: No Re-Closure Protocol

- There is no re-closure of a spawning closure.

# Public Comment



<b>Issue 3: Re-closure Protocol</b>		
	<b>Option A</b>	<b>Option B</b>
	Status Quo	No Re-closure Protocol
Individual	2	1
Organization	3	
Hearings		
ME	1	
NH	2	
MA	1	
<b>TOTAL</b>	<b>9</b>	<b>1</b>

# Public Comment



## Issue 3: Re-closure Protocol (Option A Sub-Options)

	Sub-Option 1	Sub-Option 2	Sub-Option 3
	Status Quo ("Significant number" = 25%)	"Significant number" = 20%	"Significant number" = 15%
Individual	1		1
Organization	2	1	
Hearings			
ME	1		
NH		2	
MA			1
<b>TOTAL</b>	<b>4</b>	<b>3</b>	<b>2</b>

# Additional Comments



- Consider measures that are consistent with Federal FMP, allow fishery to utilize optimal yield.
  - Specifically, shorter spawning closures and more flexible re-closure protocols
- Opposition to further restrictions on Area 1A fishery; recommend postponing final action on Addendum
- Current sampling is not sufficient in Area 1A
  - Need quicker closures and longer closed periods
- Mid-water trawlers have a disproportionate impact on the resource
- Low recruitment is being driven by issues in available food sources for larvae fish
- Protecting spawning in GOM needs reciprocal protection on Georges Bank



# Questions



# 2020-2021 Atlantic Herring Specifications



Atlantic Herring Management Board

April 29, 2019

# Overview



- 2019 Specifications were previously set (February 2019)
- New England Fishery Management Council met earlier this month to consider Framework 6
  - 2020-2021 Specifications

# 2020-2021 Specs



- Framework 6
  - Developed to set 2020-2021 specifications based on new information from the 2018 benchmark assessment
  - Council agreed to include two overfishing definitions for 2020 specifications

Fishing Year 2020	Alternative 1 (No Action)	Alternative 2 (Original)	Alternative 2 (Updated)
OFL	<b>30,688 mt</b>	<b>41,830 mt</b>	<b>40,574 mt</b>
ABC	<b>21,266 mt</b>	<b>16,131 mt</b>	<b>14,265 mt</b>



# Framework 6 cont'd



- Management Uncertainty Buffer
  - Will include 3, 5, and 10 year avg of New Brunswick Weir Fishery Catch
  - 1,000 mt will roll back to Area 1A on Oct 1 if Weir Fishery has not landed majority of the buffer
- Border Transfer
  - Include two alternatives: 0mt and 250mt
- US at-Sea Processing: 0mt



# Framework 6 cont'd



- Maintain sub-ACLs proportions (Area 1A = **28.9%**)
- Maintain Seasonal sub-ACLs (for Area 1A 0% Jan- May; 100% June-December)
- RSA: maintain 3% for each of the sub-ACLs
- Proportionally reduce FGSA
- River Herring/Shad Catch Caps

River Herring/Shad Catch Caps	Allocation in Metric Tons
Midwater Trawl (GOM)	<b>76.7 mt</b>
Midwater Trawl (Cape Cod)	<b>32.4 mt</b>
Midwater Trawl SNE and MA	<b>129.6 mt</b>
Bottom Trawl SNE and MA	<b>122.3 mt</b>



# Next Steps



- PDT, AP, and NEMFC Herring will meet in May
- Council is expected to take final action in June



# Questions?





# Progress Update on Atlantic Herring Draft Addendum III



Atlantic States Marine Fisheries Commission

April 30, 2019

# Presentation Outline



- Background
- Update
- Requested feedback
- Questions

# Background



- Board initiated Draft Addendum III at 2018 Annual Meeting
  - Addendum was initiated to develop a spawning program in Area 3
- Board also requested NEMFC consider herring spawning protection in its 2019 priorities
  - Commission sent Letter to NEFMC in November 2018

# Update

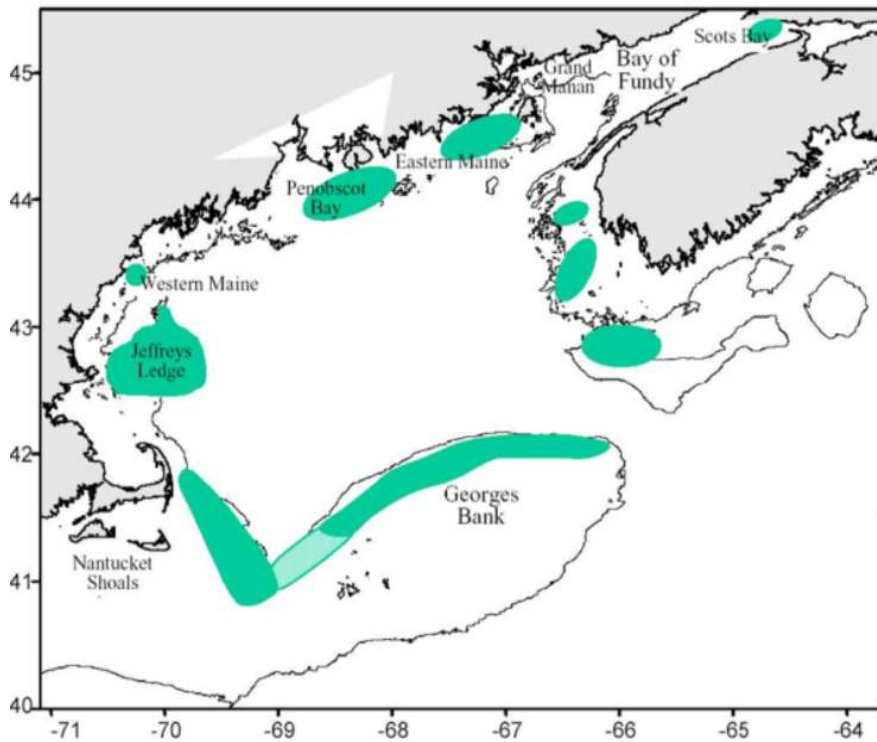


- Council added Herring Spawning Protection to its 2019 priorities
  - Plans to hire a consultant to support development of discussion document
- No progress has been made in drafting Addendum III
- April 2019 NEFMC PDT Sub-group Call
  - Challenges identified
  - Key Questions for Board members

# Spawning Locations & Protections

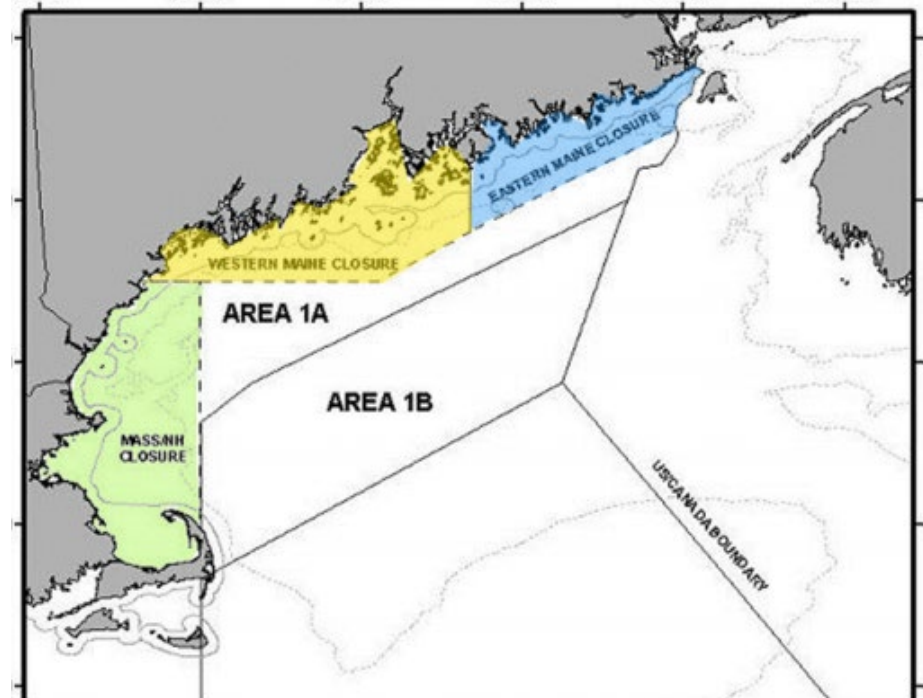


## Primary spawning locations



Overholtz et al. 2004

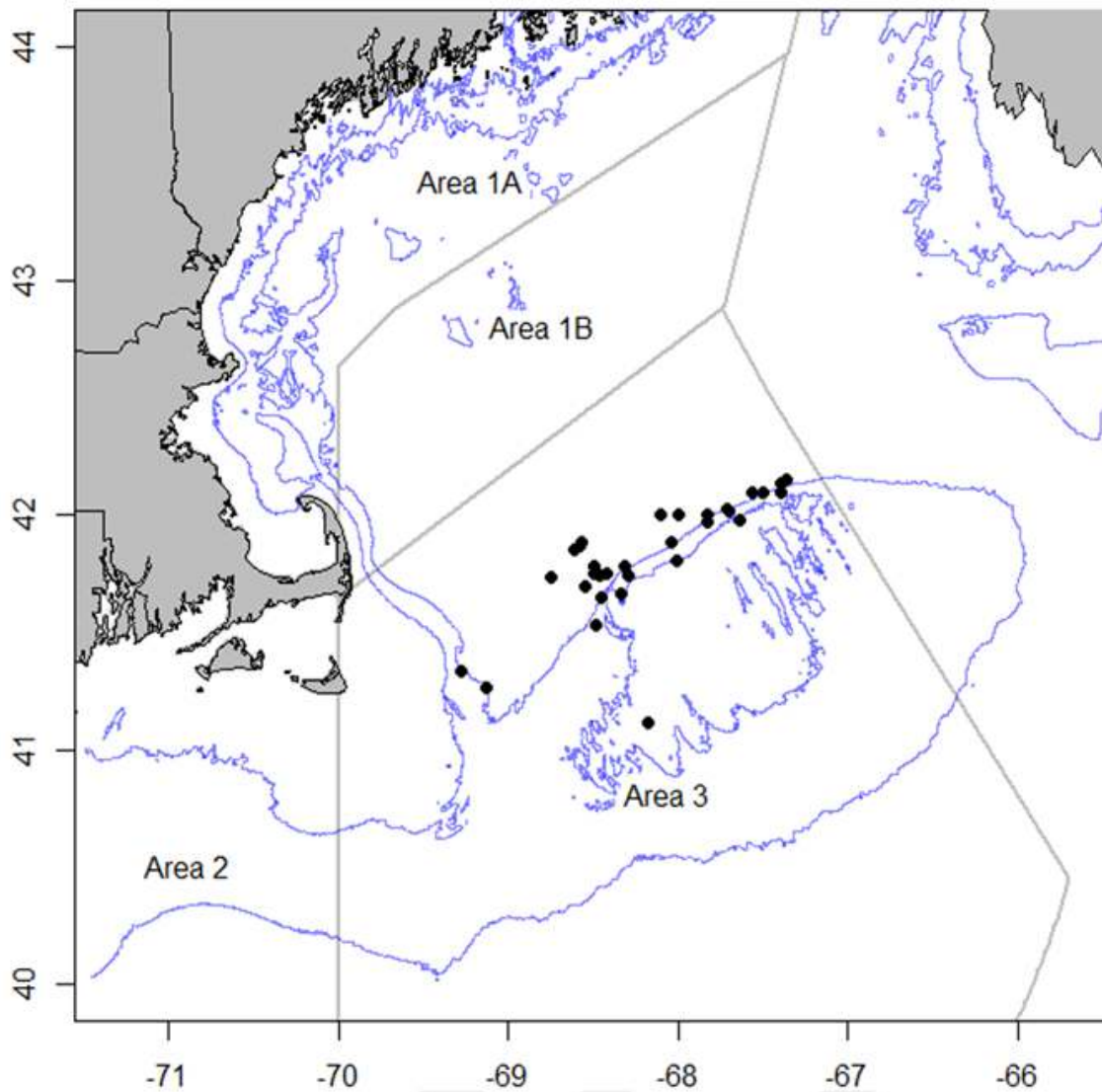
## Current GOM spawning closures



# Challenges



- Area 3 is large
  - Many unknowns regarding timing and location of spawning events
    - may be occurring at different times, in multiple large areas
  - Current sampling of spawning herring in Area 3 is limited
    - No dedicated fishery independent sampling currently
- Reduced Quotas in future years will limit fishery dependent sampling



Year	Trips sampled
1998	2
1999	0
2000	8
2001	0
2002	5
2003	1
2004	0
2005	1
2006	0
2007	0
2008	0
2009	0
2010	1
2011	2
2012	4
2013	5
2014	5
2015	4
2016	3
2017	2
2018	3
Total	46

# Tentative Council Timeline



- **May 2019:** Hire Consultant to develop Discussion Document
- **Summer 2019:** Develop Discussion Document in consultation with ASMFC TC and NEFMC PDT
- **September 2019:** Present Discussion Document to Council and discuss possible next steps

# Key Questions



- 1) Is the goal of the Board motion from October 2018 to have discreet spatial spawning closures or one large spawning closure?
  - Discreet Area Closures: Georges Bank, Nantucket Shoals, etc.
  - Large Area Closure: Area 3
  
- 2) If yes to either, what type of monitoring or protocol would inform spawning closures?

# Motion from October 2018



Move to request that the ASMFC Executive Committee direct funds for increased spawning sampling in Georges Bank and Nantucket Shoals.

The Board initiates an addendum to develop a herring spawning protection program in Area 3. Recognizing the New England Fishery Management Council as a federal partner in the management of Atlantic herring, the Board requests the Council consider herring spawning protection in its 2019 priorities.



# Management Tools Used to Set Days Out Measures



Atlantic Herring Management Board

April 30, 2019

# Overview



- 2019 sub-ACL is much lower than previous years
  - 31,962 mt in 2018 to 3,850 mt this year
- April 2019 Days Out Meeting
  - Board moved to bi-monthly quota periods for 2019
  - Quota could be harvested as quickly as 3 weeks depending on variables
- Discussion on Days Out Management Tools
  - Consider lower sub-ACL in 2020

# Area 1A Tools



- **Days Out**

- Prohibit landings days or the possession of herring for only Category A permit holders.
- Category C Limited Access Permit and Category D Open Access permits: only those designated Small Mesh Bottom Trawl can be submit to days out measures
- All other permit holders are no subject to days out measures unless stipulated by state regulations



# Area 1A Tools



- **Weekly Landings Limit**

- Limits the amount of herring a vessel may land on a weekly basis for Category A permit holders



# Area 1A Tools



- **Restrictions on Transfers At-Sea and Carrier Vessels**
  - Restricts who (harvester/carrier) can transfer at sea and the number of transfer that can occur
  - States can elect to allow to transfers at sea, allow limited transfers, or prohibit transfers
  - When prohibiting transfers at sea, State can chose to restrict
    - Harvester to Harvester
    - Harvester to Carrier
    - Both



# Next Steps



- Staff and the states will monitor the effectiveness of the current management tools during the first few quota periods
  - Will provide an update to the Board at their next Meeting
- Discussion on utility of current Area 1A management tools given changes in the abundance of Atlantic herring



# Questions?





# Atlantic Herring FMP Review for the 2018 Fishing Year



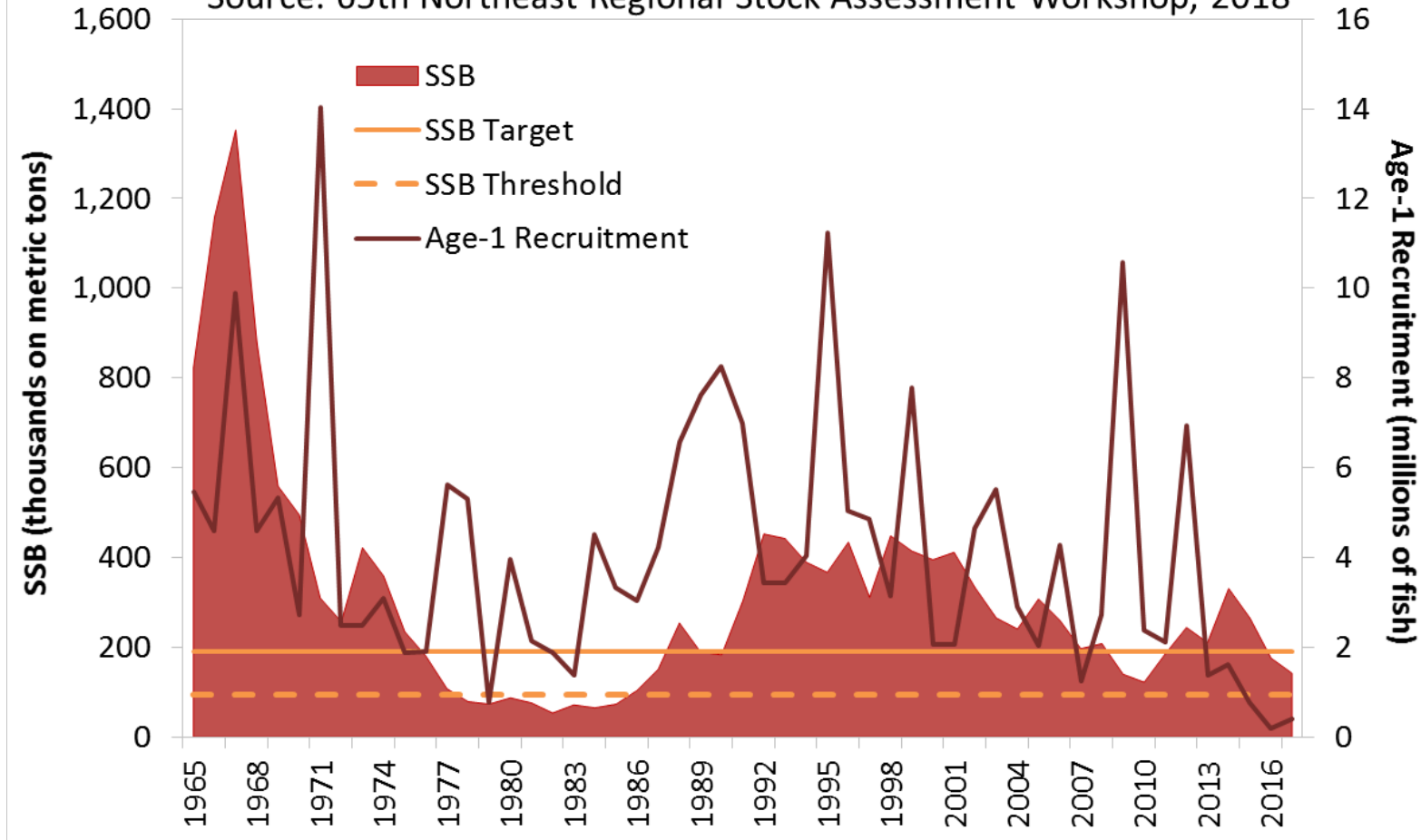
Atlantic Herring Board  
April 30, 2019

# Status of the Stock



## Atlantic Herring Spawning Stock Biomass & Recruitment

Source: 65th Northeast Regional Stock Assessment Workshop, 2018

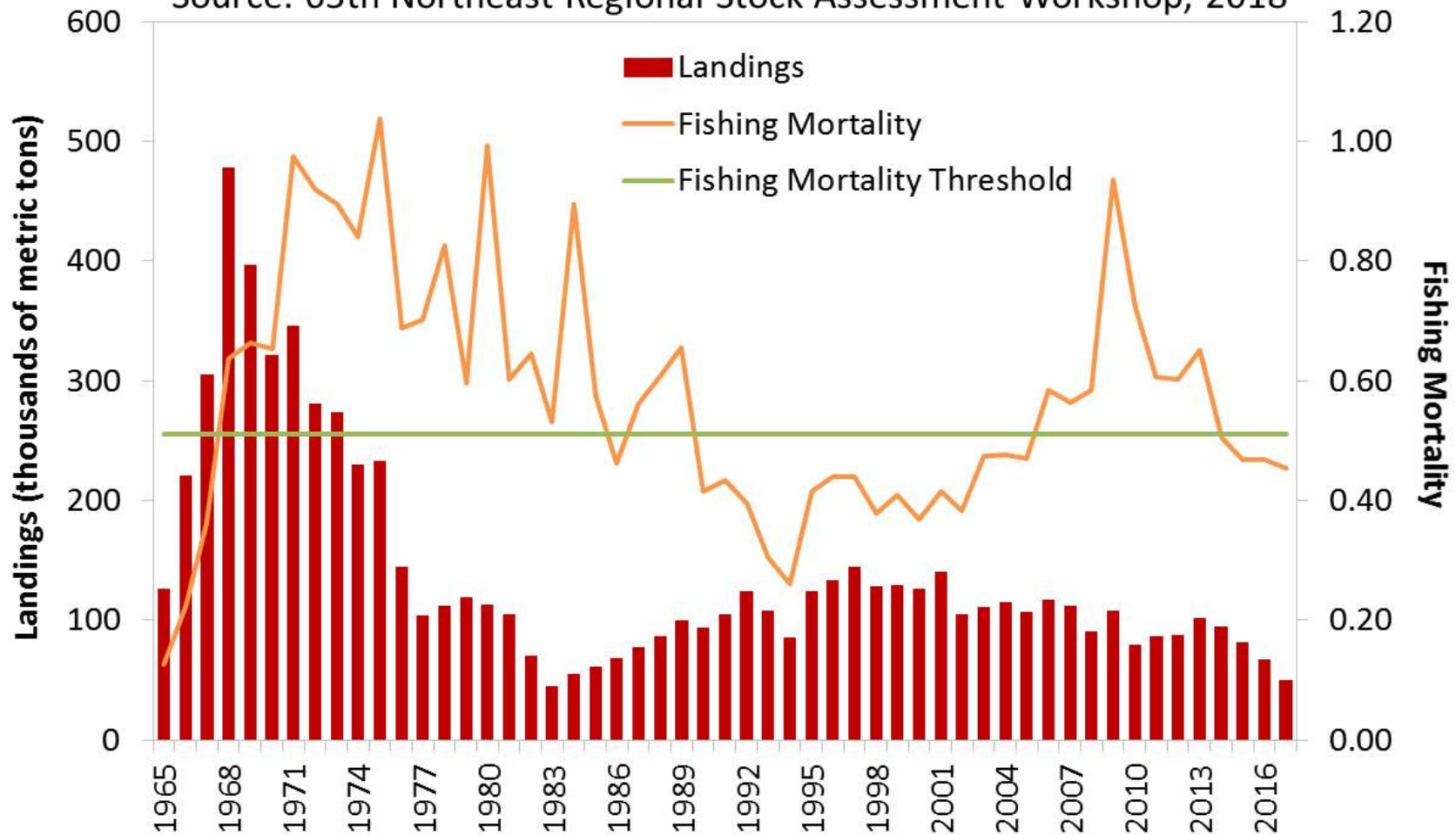


# Status of the Fishery



## Atlantic Herring Commercial Landings

Source: 65th Northeast Regional Stock Assessment Workshop, 2018



# 2018 Days Out Measures



Trimester	Date Effective	Consecutive Landing Days for Category A Permit	Weekly Landings Limit for Category A Permit	Poundage that can be Transferred to a Carrier Vessel
<b>2</b>	June 1, 2018	4	480,000	80,000
	July 22* 2018	5	640,000	160,000
	August 22, 2018**	5	640,000	160,000
	September 10, 2018	0	0	0
<b>3</b>	October 1, 2018	5	NA	NA
	November 16, 2018	7	NA	NA

# Spawning Closures



## **Eastern Maine Spawning Area**

- Closed on the default date of August 28<sup>th</sup> through September 24<sup>th</sup>, given there was no samples from the area at the time.

## **Western Maine Spawning Area**

- Closed on the default date of October 4<sup>th</sup> through 31<sup>st</sup>, due to a lack of samples.

## **Massachusetts/New Hampshire Spawning Area**

- Based on GSI<sub>30</sub> model, closed on the projected date of October 26<sup>th</sup> and continued through November 22<sup>nd</sup>.
- Closure was based on eight samples

# State Compliance and *De Minimis*



## State Compliance

- PRT finds all states in compliance with Atlantic Herring FMP

## *De Minimis*

- State may be eligible for *de minimis* if its combined average of the last 3 years of commercial landings constitute less than 1% of the coastwide commercial landings for the same 3-year period.
- NY has requested and met the requirements of *de minimis* status

# Questions?



PRT recommends the Atlantic Herring Section approve the 2018 Atlantic Herring FMP Review, state compliance reports, and de minimis status for NY