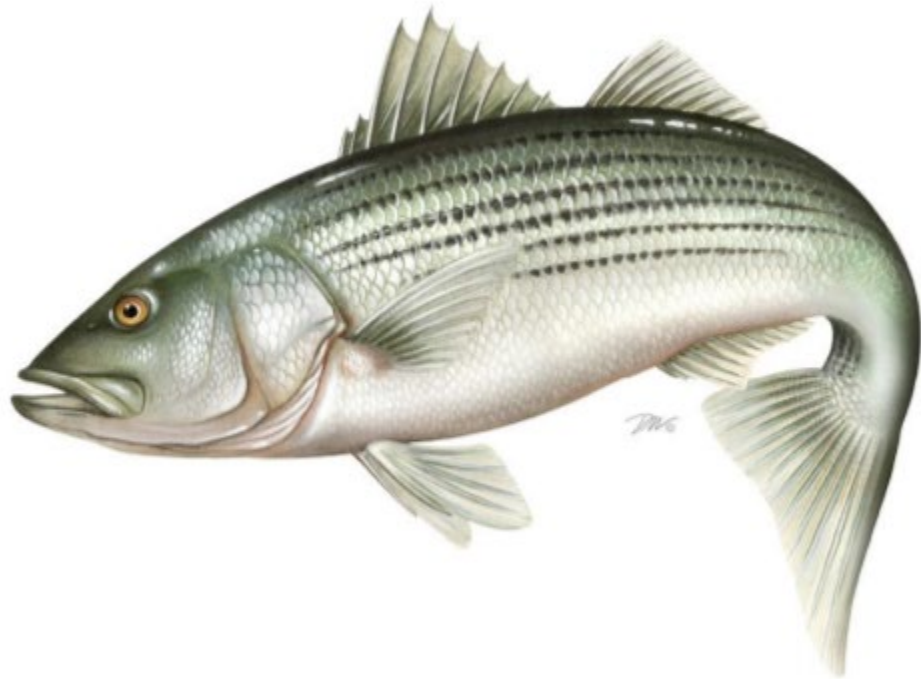


# ATLANTIC STATES MARINE FISHERIES COMMISSION

## REVIEW OF THE INTERSTATE FISHERY MANAGEMENT PLAN

FOR ATLANTIC STRIPED BASS  
*(Morone saxatilis)*

2011 FISHING YEAR



Prepared by the Plan Review Team

Approved by the Atlantic Striped Bass Management Board  
October 2012

## **Executive Summary**

Atlantic striped bass from Maine through North Carolina are managed under Amendment 6 to the Interstate Fishery Management Plan, and Addendum I, II and III to Amendment 6.

Stock status was estimated in 2011. The stock was not overfished and overfishing was not occurring in 2010, although total striped bass population abundance declined 37 percent from 2004. A benchmark assessment is underway and is expected to undergo peer review in June 2013. The review of the juvenile abundance indices did not trigger any recommendations for management action. Recruitment failure is defined as a value that is below 75% of all values in a fixed time series appropriate to each juvenile abundance index.

Total striped bass harvest in 2011 is estimated at 3.178 million fish or 32.2 million pounds, which is a 13.7% increase by weight and a 9.5% increase by number from 2010. Recreational anglers harvested 2.12 million fish (26.3 million pounds) in 2011, while commercial fishermen harvested 1.05 million fish (6.8 million pounds). Dead discards from the recreational fishery are estimated at 0.5 million fish.

All states have implemented management programs consistent with Amendment 6. Two states exceeded their coastal commercial quotas in 2010, requiring reduced 2011 quotas. The Chesapeake Bay quota in 2010 was 8.9 million pounds and was not exceeded.

All states have implemented monitoring programs consistent with Amendment 6. Requirements vary by state, and may include monitoring commercial and/or recreational catch, effort, and catch composition, and performing juvenile abundance surveys, spawning stock surveys, and tagging programs.

## Table of Contents

Executive Summary .....	1
Table of Contents .....	2
I. Status of the Fishery Management Plan.....	3
II. Status of the Stocks .....	6
III. Status of the Fishery.....	7
IV. Status of Assessment Advice .....	8
V. Status of Research and Monitoring.....	8
VI. Status of Management Measures and Issues.....	9
Status of Amendment 6 .....	9
Coastal Commercial Quota.....	9
Chesapeake Bay Quota.....	9
Chesapeake Bay Spring Trophy Fishery .....	10
Wave-1 Recreational Harvest Estimates .....	10
Law Enforcement .....	<b>Error! Bookmark not defined.</b>
Juvenile Abundance Indices .....	10
Albemarle/Roanoke Striped Bass FMP .....	11
VII. Annual State Compliance .....	12
VIII. Recommendations.....	<b>Error! Bookmark not defined.</b>
IX. References.....	14
X. Figures.....	16
XI. Tables.....	2

## **I. Status of the Fishery Management Plan**

<u>Date of FMP Approval:</u>	Original FMP – 1981
<u>Amendments:</u>	Amendment 1 – 1984 Amendment 2 – 1984 Amendment 3 – 1985 Amendment 4 – 1989; Addendum I – 1991, Addendum II – 1992, Addendum III – 1993, Addendum IV – 1994 Amendment 5 – 1995; Addendum I – 1997, Addendum II – 1997, Addendum III – 1998, Addendum IV – 1999, Addendum V – 2000 Amendment 6 – 2003; Addendum I – 2007, Addendum II – 2010, Addendum III – 2012
<u>Management Unit:</u>	Migratory stocks of Atlantic striped bass from Maine through North Carolina
<u>States With Declared Interest:</u>	Maine - North Carolina, including Pennsylvania
<u>Additional Jurisdictions:</u>	District of Columbia, Potomac River Fisheries Commission, National Marine Fisheries Service, United States Fish and Wildlife Service
<u>Active Boards/Committees:</u>	Atlantic Striped Bass Management Board, Advisory Panel, Technical Committee, Stock Assessment Subcommittee, Tagging Subcommittee, Plan Review Team, and Plan Development Team

The Atlantic States Marine Fisheries Commission (Commission) developed a fisheries management plan (FMP) for Atlantic striped bass in 1981 in response to declining juvenile recruitment and landings. The FMP recommended increased restrictions on commercial and recreational fisheries, such as minimum size limits and harvest closures on spawning grounds. Two amendments were passed in 1984 recommending additional management measures to reduce fishing mortality. To strengthen the management response, the Atlantic Striped Bass Conservation Act (P.L. 98-613) was passed in late 1984, which mandated the implementation of striped bass regulations passed by the Commission.

The first enforceable plan, Amendment 3, was approved in 1985, and required size regulations to protect the 1982 year class, which was the first modest size cohort since the previous decade. The objective was to increase size limits to allow at least 95% of the females in the cohort to spawn at least once. Smaller size limits were permitted in producer areas than along the coast. Several states, beginning with Maryland in 1985, opted for a more conservative approach and imposed a total moratorium on striped bass landings for several years. The amendment contained a trigger mechanism to reopen the fisheries when the 3-year moving average of the Maryland juvenile abundance index (JAI) exceeded an arithmetic mean of 8.0. That level was attained with the recruitment of the 1989 year class.

Consequently, Amendment 4 was adopted to allow state fisheries to reopen in 1990 under a target fishing mortality (F) of 0.25, which was half the estimated F needed to achieve maximum

sustainable yield (MSY). The amendment allowed an increase in the target F once spawning stock biomass (SSB) was restored to levels estimated during the late 1960s and early 1970s. The dual size limit concept was maintained, and a recreational trip limit and commercial season implemented to reduce the harvest to 20% of that in the historic period of 1972-1979. The amendment and its four addenda aimed to rebuild the resource, rather than maximize yield.

In 1995, coastal striped bass were declared restored by the Commission, and Amendment 5 was adopted to increase the target F to 0.33, midway between the existing F target (0.25) and  $F_{MSY}$ , which was revised to 0.40. Regulations were developed to allow 70% of the historic harvest and achieve the target F, although states were allowed to submit proposals for alternative regulations that were conservationally equivalent. From 1997-2000, a series of five addenda were implemented to respond to the latest stock status information.

In 2003, Amendment 6 was adopted to address five limitations within the management program: 1) potential inability to prevent the Amendment 5 exploitation target from being exceeded; 2) perceived decrease in availability or abundance of large striped bass in the coastal migratory population; 3) a lack of management direction with respect to target and threshold biomass levels; 4) inequitable effects of regulations on the recreational and commercial fisheries, and coastal and producer area sectors; 5) and excessively frequent changes to the management program. Amendment 6 was fully implemented by January 1, 2004, and completely replaced all previous Commission plans for Atlantic striped bass.

The goal of Amendment 6 is to perpetuate, through cooperative interstate management, migratory stocks of striped bass; to allow commercial and recreational fisheries consistent with the long-term maintenance of a broad age structure, a self-sustaining spawning stock; and also to provide for the restoration and maintenance of their essential habitat. In support of this goal, the following objectives are included:

- Manage striped bass fisheries under a control rule designed to maintain stock size at or above the target female spawning stock biomass level and a level of fishing mortality at or below the target exploitation rate.
- Manage fishing mortality to maintain an age structure that provides adequate spawning potential to sustain long-term abundance of striped bass populations.
- Provide a management plan that strives, to the extent practical, to maintain coastwide consistency of implemented measures, while allowing the States defined flexibility to implement alternative strategies that accomplish the objectives of the FMP.
- Foster quality and economically viable recreational, for-hire, and commercial fisheries.
- Maximize cost effectiveness of current information gathering and prioritize state obligations in order to minimize costs of monitoring and management.
- Adopt a long-term management regime that minimizes or eliminates the need to make annual changes or modifications to management measures.
- Establish a fishing mortality target that will result in a net increase in the abundance (pounds) of age 15 and older striped bass in the population, relative to the 2000 estimate.

Amendment 6 modified the F targets and thresholds, and introduced a new set of biological reference points (BRPs) based on females spawning stock biomass (SSB), as well as a list of management triggers based on the BRPs. (The targets and thresholds were updated in 2008; see Sections II and IV for more information.) The coastal commercial quotas for striped bass were restored to 100% of the states' average landings during the 1972-1979 historical period, except for Delaware's coastal commercial quota, which remained at the level allocated in 2002. In the recreational fisheries, all states were required to implement a two fish bag limit with a minimum size limit of 28 inches, except for the Chesapeake Bay fisheries, Albemarle/Roanoke fisheries, and states with approved alternative regulations. The Chesapeake Bay and Albemarle/Roanoke regulatory programs are predicated on a more conservative F target than the coastal migratory stock, which allows these jurisdictions to implement separate seasons, harvest caps, and size and bag limits as long as they remain under that F target. No minimum size limit can be less than 18 inches. The same minimum size standards regulate the commercial fisheries as the recreational fisheries, except for a minimum 20 inch size limit in the Delaware Bay spring gillnet fishery.

States are permitted the flexibility to deviate from these standards by submitting proposals for review by the Striped Bass Technical Committee, Advisory Panel, and Plan Review Team and contingent upon the approval of the Management Board. A state may request a change only if it can demonstrate that the action is "conservationally equivalent" to the management standards or will not contribute to the overfishing of the resource. This practice has resulted in a variety of regulations among states (see Tables 1 and 2).

In 2007, Addendum I was implemented to establish a bycatch monitoring and research program to increase the accuracy of data on striped bass discards and also recommend development of a web-based angler education program. In 2010, Addendum II modified the definition of recruitment failure as a value that is below 75% of all values in a fixed time series appropriate to each juvenile abundance index. In 2012, Addendum III was approved by the Board. This addendum requires all states and jurisdictions with a commercial fishery to implement a commercial harvest tagging program. The addendum was initiated in response to significant poaching events in the Chesapeake Bay and aims to limit illegal harvest of striped bass.

The Exclusive Economic Zone (EEZ) has been closed to the harvest and possession of striped bass since 1990, with the exception of a defined route to and from Block Island in Rhode Island. A recommendation was made in Amendment 6, and submitted to the Secretary of Commerce, to re-open federal waters to commercial and recreational fisheries. Starting in July 2003 and continuing for several years, National Marine Fisheries Service (NMFS) took steps in the rulemaking process to consider the proposal. In September 2006, NMFS concluded that it would be imprudent to open the EEZ to striped bass fishing and chose not to proceed further in its rulemaking. Specifically, NMFS concluded that: 1) it could not be certain, especially after taking into account the overwhelming public perception that large trophy sized fish congregate in the EEZ, that opening the EEZ would not increase effort and lead to an increase in mortality that would exceed the threshold, and 2) both the Commission's and NMFS' ability to immediately respond to an overfishing and/or overfished situation is a potential issue, particularly given the timeframe within which Amendment 6 was created, and given the lag time in which a given year's data is available to management (71 FR 54261-54262).

Additionally, in October 2007, President George W. Bush issued an executive order prohibiting the sale of striped bass (and red drum) caught within the EEZ. The Order also requires the Secretary of Commerce to encourage management for conservation of the resources, including State designation as gamefish where the State determines appropriate under applicable law, and to periodically review the status of the populations within US jurisdictional waters. The most recent report to Congress on the status of the striped bass population was submitted in 2012 (NOAA 2012).

## II. Status of the Stocks

The most recent striped bass stock assessment was conducted by the Striped Bass Technical Committee, Stock Assessment Subcommittee, and Tagging Subcommittee in 2011 and includes data through 2010 (ASMFC 2011). Two models were included to assess stock status: an age-based statistical catch-at-age (SCA) model, and a tag-based catch equation (CE) model. Based on the results of both models and comparison to the biological reference points, below, Atlantic striped bass are not overfished and are not experiencing overfishing.

	<i>Female Spawning Stock Biomass</i>	<i>Fully-Recruited Fishing Mortality</i>
<i>Threshold</i>	SSB <sub>1995</sub> = 30,000 metric tons	F <sub>msy</sub> = 0.34
<i>Target</i>	SSB <sub>threshold</sub> x 1.25 = 37,500 metric tons	0.30 (0.27 in Chesapeake Bay and Albemarle/Roanoke)

The SCA model estimated that the resource remains at a high level with female spawning stock biomass (SSB) at 50,548 metric tons (mt), or 168% of the threshold and 134% of the target (Figure 1). The 2010 estimate of SSB was a decrease from the 2008 estimate of 55,500 mt and SSB estimates continue to be less than the time series maximum of 63,588 mt in 2004. Recruitment estimated in the SCA model as age-1 abundance averaged 13.5 million fish from 1994-2004 (Figure 2). The 2003 cohort (age 1 in 2004) remains the second largest year-class since 1982 at 20.8 million fish. The 2009 and 2010 estimates (7.1 million and 9.1 million, respectively) were near the average recruitment observed during 2005-2010 (8.1 million fish), but well below the 1994-2004 average. The SCA model estimated the 2010 fishing mortality rate (F) on age 8–11 fish to be F=0.23, which is well below the fishing mortality threshold and target (Figure 3).

Overall, the conclusion is that stock abundance has declined since the assessment time series high of 2004. The decrease in abundance is reflected in a decline in coastwide catch in 2009 and 2010, particularly in recreational discards comprised of smaller fish. The decline is more prevalent in areas largely dependent on contributions from the Chesapeake stocks (such as Maine) than areas such as New York that are dominated by the Hudson stock (Waldman et al 1990). Despite the decline in abundance, the spawning stock in 2010 remained relatively high due to the growth and maturation of the 2003 year class and the accumulation of spawning stock biomass from year classes prior to 1996.

Because Amendment 6 implemented distinct management programs for the Chesapeake Bay and Albemarle/Roanoke area with a fishing mortality target of 0.27, separate estimates of fishing

mortality for the areas are required. The 2011 stock assessment includes the estimates for the Chesapeake Bay. Based on application of Maryland and Virginia tagging data to the CE model, Chesapeake Bay F estimates for fish 18 – 28 inches ranged from 0.01 to 0.15 throughout the time series (1987-2010), and was estimated at 0.16 for 2010.

In March 2010, the North Carolina Division of Marine Fisheries used the Age Structured Assessment Program (NOAA Fisheries Toolbox <http://nft.nefsc.noaa.gov/>) to determine stock status (data through 2008). Currently, the stock is not experiencing overfishing. Fishing mortality on ages 4-6 striped bass has declined steadily since 2004 and was estimated at 0.10 in 2008. The JAI continues to fluctuate around the average observed since the stock was declared recovered in 1997. The age structure of the stock continues to expand, with an overall increase in abundance of age 9+ fish in the population. The current maximum age observed on the spawning grounds is 17 (captured during the 2008 sampling season). Estimated abundance of age 4-6 striped bass in the stock increased steadily and peaked in 2000 at about 550,000 fish. Age 4-6 abundance declined slightly and varied without trend at about 470,000 fish through 2006, and has since fallen to an estimated 336,000 fish in 2008. The low abundance of age 4-6 fish in 2008 is due to poor recruitment from the 2003 and 2004 year classes.

### **III. Status of the Fishery**

Total striped bass commercial and recreational harvest in 2011 (excluding Albemarle Sound/Roanoke River Management Area) is estimated at 32.2 million pounds or 3.178 million fish (Figures 4 and 5; Tables 3 - 6). This is a 13.7% increase by weight and a 9.5% increase by number from 2010. The commercial and recreational fisheries harvested 19 and 81 percent, respectively.

The commercial fishery (coastal and Chesapeake Bay combined) landed 6.8 million pounds in 2011, slightly lower than landings in 2010 (6.97 million pounds). The Chesapeake Bay jurisdictions dominated the 2011 commercial landings; by pounds, Maryland landed 30%, Virginia landed 21%, and PRFC landed 10%. Additional landings came from Massachusetts (17%), New York (13%), North Carolina (4%), Rhode Island (3%), and Delaware (3%).

The total coastal commercial harvest in 2011 was 2.874 million pounds, which was a fractional decrease from the 2010 coastal landings of 2.899 million pounds. The total Chesapeake Bay commercial harvest in 2011 was 4.1 million pounds in 2011, which represent a 6.8% decrease from the 2011 landings of 4.4 million pounds.

In 2011, the recreational fishery (coastal and Chesapeake Bay combined) landed an estimated 2.12 million fish (26.3 million pounds). This was similar to the 2010 landings by number (1.9 million fish) but a 23% increase by weight from 2010 (21.33 million pounds). The coastal recreational harvest was 23.39 million pounds. The recreational Bay-wide harvest was 2.91 million pounds and represents an 8% decrease in harvest from 2010.

Recreational releases decreased for the fifth consecutive year to 5.744 million fish; releases peaked in 2006 at 25.88 million fish (Figure 6; Table 7). The 2011 recreational catch estimate of 8.03 million fish is the lowest on record since 1995, and represents a 72% decline from the peak in 2006. Anglers are keeping more of the fish they catch in recent years or catching fewer sub-



legal fish. The proportion of catch that is released declined to 71% in 2011, the lowest since 1983. Using a 9% release mortality rate, recreational dead discards are estimated to be 517,000 million fish in 2011. Total recreational removals (landings and dead discards combined) in 2011 (2.64 million fish) was similar to the previous year. New York landed the largest percent of the coastwide recreational landings in number of fish (26.2%), followed by Maryland (19.6%), Massachusetts (17%), New Jersey (12%), and Connecticut (10.7%). The remaining states each landed less than 5% of the 2011 recreational landings by number of fish.

#### **IV. Status of Assessment Advice**

The 2011 Atlantic striped bass stock assessment is an update to the 2007 benchmark stock assessment (NEFSC 2008a, NEFSC 2008b). The benchmark assessment was favorably peer reviewed at the 46<sup>th</sup> Stock Assessment Workshop (SAW). The Stock Assessment Review Committee (SARC) identified several topics deserving special attention or improvement in future assessments, including: examining sensitivity of assessment results to discard estimates and improving those estimates; age determination for striped bass older than about age 10; extracting more information out of the young-of-year indices; employing better methods of averaging multiple survey indices; using regional surveys to get direct information about differences in recruitment levels for the sub-stocks of the fishery; and better standardization of state surveys (NEFSC 2008a). The SARC found that the SCA model “best estimated parameters that could be judged against the current biological benchmarks.”

The SARC also advised the assessment team to re-estimate the F threshold ( $F_{msy}$ ) based on data and stock estimates from the SCA model, and link the female SSB target and threshold to the SCA model’s 1995 SSB estimate. The assessment team undertook this work and in August 2008 the Board approved updated Amendment 6 BRPs (see Section II).

The next benchmark assessment is currently underway and is scheduled for peer review in June 2013 at the 56<sup>th</sup> SAW.

#### **V. Status of Research and Monitoring**

The management plan requires certain jurisdictions to implement fishery-dependent monitoring programs for striped bass. All jurisdictions with commercial fisheries or substantial recreational fisheries are required to define the catch composition of these fisheries. Jurisdictions with substantial commercial fisheries and those agencies monitoring recreational fisheries are required to gather representative catch and effort data for these fisheries.

The management plan also requires certain states to monitor the striped bass population independent of the fishery. Juvenile abundance indices are required from Maine (Kennebec River), New York (Hudson River), New Jersey (Delaware River), Maryland (Chesapeake Bay tributaries), Virginia (Chesapeake Bay tributaries), and North Carolina (Albemarle Sound). Spawning stock sampling is mandatory for New York (Hudson River), Pennsylvania (Delaware River), Delaware (Delaware River), Maryland (Upper Chesapeake Bay and Potomac River), Virginia (Rappahannock River and James River), and North Carolina (Roanoke River and Albemarle Sound). Amendment 6 requires NOAA Fisheries, USFWS, Massachusetts, New

York, New Jersey, Maryland, Virginia, and North Carolina to continue their tagging programs, which provide data used to determine survivorship and migration patterns.

## **VI. Status of Management Measures and Issues**

### ***Status of Amendment 6***

Amendment 6 and Addendum I to Amendment 6 set the regulatory measures in 2009. Management requirements include size limits, bag limits, coastal commercial quotas, and regulatory measures in the Chesapeake Bay and Albemarle Sound/Roanoke River set to not exceed target fishing mortality rates.

In May 2009, the Management Board initiated the development of an addendum to consider options to roll over unused coastal commercial quota up to fifty percent, and approved sending the draft addendum out for public comment in August 2009. In November 2009, the Board voted for status quo management in regards to unused quota rollover.

In February 2010, the Management Board initiated the development of an addendum to consider options to increase the coastal commercial quota. The Board approved the draft addendum for public comment in May 2010, with the addition of an option to consider adopting a Technical Committee recommendation to revise the JAI management trigger. Adopting the Technical Committee recommendation would modify the definition of recruitment failure, such that each index would have a fixed numerical value indicating failure, rather than one that changes from year to year. The Board approved the revised JAI management triggers. The new definition of recruitment failure is a value that is below 75% of all values in a fixed time series appropriate to each juvenile abundance index.

In 2012, Addendum III was approved by the Board. This addendum requires all states and jurisdictions with a commercial fishery to implement a commercial harvest tagging program. The addendum was initiated in response to significant poaching events in the Chesapeake Bay and aims to limit illegal harvest of striped bass.

### ***Coastal Commercial Quota***

In 2011, four states had coastal commercial quotas lower than their Amendment 6 allocation due to quota overages in 2010 and/or conservation equivalencies related to minimum size limits: Massachusetts (overage), Rhode Island (overage and size limit), New York (size limit), and Maryland (size limit) (Table 8). In 2011, two states exceeded their coastal commercial quotas and should have their 2012 quotas reduced accordingly. Massachusetts exceeded its adjusted coastal commercial quota by 90,731 pounds, resulting in an adjusted 2012 quota of 1,069,019 pounds. New York exceeded its adjusted coastal commercial quota by 10,651 pounds, for an adjusted 2012 quota of 232,974 pounds.

### ***Chesapeake Bay Quota***

Amendment 6 includes a separate management program for the Chesapeake Bay due to the size availability of striped bass in this area. Based on a target fishing mortality rate of  $F=0.27$ , Maryland, Virginia, and the Potomac River Fisheries Commission (PRFC) annually establish a bay-wide quota for resident fish using the Harvest Control Model (Table 9). In 2011, the bay-wide quota was 8,825,510 pounds. Shares are allocated to Maryland, the PRFC, and Virginia

based on historical harvest, and each jurisdiction then allocates portions of the quota to its recreational and commercial fisheries. In 2011, the bay-wide harvest was 6,839,701 pounds and within the quota.

### ***Chesapeake Bay Spring Trophy Fishery***

Recreational fishermen in the Chesapeake Bay are permitted to take adult migrant fish during a limited seasonal fishery, commonly referred to as the Spring Trophy Fishery. From 1993 to 2007 the fishery operated under a quota. Beginning in 2008, the Board approved non-quota management until stock assessment indicates that corrective action is necessary to reduce F on the coastal stock. After several years of varying size limits in Maryland and the Potomac River to account for quota overages, a 28 inch size limit has been in place since 2008; Virginia's trophy fish size limit has been higher at 32 inches. The trophy season in Virginia is also shorter.

In 2011, the estimate of migrant fish harvested during the trophy season is 35,323 fish (35,182 fish in Maryland and 141 fish in Virginia [state compliance reports 2012]) and represents a 77% increase from 2010. In weight of fish, the estimate is 595,806 pounds total (593,691 pounds in Maryland and 2,115 pounds in Virginia). Harvest of migrant striped bass in the spring fishery in 2011 was below the 2006-2011 average (47,704 fish). In Maryland, the break down between private angler and charter boat harvest is 22,616 fish and 12,566 fish, respectively.

### ***Wave-1 Recreational Harvest Estimates***

Evidence suggests that North Carolina, Virginia, and possibly other states have had sizeable wave-1 (January/February) recreational striped bass fisheries beginning in 1996 (NEFSC 2008b). The Marine Recreational Fisheries Statistics Survey (MRFSS) has sampled for striped bass in North Carolina during wave-1 since 2004. Other states are not currently covered during wave-1.

### ***Juvenile Abundance Indices***

Amendment 6 requires the following states to conduct juvenile abundance index (JAI) surveys on an annual basis: Maine for the Kennebec River; New York for the Hudson River; New Jersey for the Delaware River; Maryland for the Maryland Chesapeake Bay tributaries; Virginia for the Virginia Chesapeake Bay tributaries; and North Carolina for the Roanoke River/Albemarle Sound . Refer to Figure 5 for the results of the juvenile abundance surveys.

The Striped Bass Technical Committee (TC) annually reviews trends in all required JAIs. Under Amendment 6, recruitment failure was defined as a value that was lower than 75 percent of all the other values in the dataset for three consecutive years. This was therefore a constantly moving value with each additional year of data. Under the new definition of recruitment failure, per Addendum II to Amendment 6, recruitment failure is defined as a value that is below 75% (the first quartile, or Q1) of all values in a fixed time series appropriate to each JAI. If any survey's JAI falls below their respective Q1 for three consecutive years, then appropriate action should be recommended by the TC to the Management Board. The Management Board is the final arbiter in all management decisions.

For the 2012 review of the JAIs, the trigger analysis evaluated the 2009, 2010, and 2011 index values. Three consecutive years of recruitment failure did not occur in any of the surveyed areas, thus no action is triggered. Within the 2009-2011 evaluation period single years of recruitment

failure did occur in Maine (2010), New York (2011), and North Carolina (2009) and are identified with the open circle. For the 2011 JAI, two surveys were below their long term average (Maine and New York) while the other four surveys were well above their long term averages.

### ***Albemarle/Roanoke Striped Bass FMP***

The Interstate FMP for Atlantic Striped Bass requires North Carolina to inform the Commission of changes to striped bass management in the Albemarle Sound/Roanoke River (A/R) System. North Carolina must adhere to the compliance criteria in Amendment 6. After a Technical Committee review, the PRT previously determined that North Carolina's FMP complies with the mandatory components of Amendment 6.

The A/R System is managed jointly for striped bass by the North Carolina Department of Environment and Natural Resources, Division of Marine Fisheries, which manages the Albemarle Sound Management Area (ASMA), and the North Carolina Wildlife Resources Commission, Division of Inland Fisheries, which manages the Roanoke River Management Area (RRMA). The 2004 FMP, which updated the 1994 FMP, set a target fishing mortality rate equal to 0.22 and threshold spawning stock biomass equal to 400,000 pounds for the A/R System. The annual total allowable catch (TAC) of 550,000 pounds is allocated evenly between the recreational and commercial fisheries, with 25% for the RRMA recreational fishery, 25% for the ASMA recreational fishery, and 50% for the ASMA commercial fishery.

Total 2011 harvest in the A/R System was estimated at 248,195 pounds, an increase from the 203,028 pounds harvested in 2010, but still 301,805 pounds below the 2011 TAC. Each sector harvested within its quota allocation. The commercial harvest in the ASMA was estimated at 134,098 pounds. Recreational harvest in the ASMA was estimated at 42,536 pounds and in the RRMA at 71,561 pounds.

A peer-reviewed statistical catch at age stock assessment model was completed in 2010 (see Section II for more results), at which time a Plan Development Team and Advisory Committee were convened to review the 2004 NC Estuarine Striped Bass FMP. An updated draft Amendment I NC Estuarine Striped Bass FMP was developed and approved to go out for public comment by the NC Marine Fisheries Commission in September 2011.

### ***Law Enforcement Reporting***

The following section describes law enforcement cases that were included in the 2012 compliance reports and does not necessarily cover all striped bass law enforcement violations in 2011.

- Pennsylvania conservation officers cited recreational anglers for violations that would have represented a maximum detected illegal harvest of 25 striped bass in 2011.
- Maryland Natural Resources Police seized, through multiple operations, 24,161 pounds of striped bass from illegally fished nets in February. Including confiscated fish, the February striped bass gill net fishery quota was not exceeded.
- The Virginia Marine Police confiscated 1,281 pounds of striped bass in 2011, and this amount is similar to the 1,476 pounds of striped bass confiscated in 2010. Using a

traditional average weight (4.7 pounds), the 2011 confiscations amounted to 272 striped bass.

- In 2011 North Carolina Marine Patrol confiscated 170 striped bass that weighed 1,723 pounds. Additionally, Marine Patrol responded to two events of discarded fish from the Atlantic Ocean trawl fishery in January and February.

## **VII. Annual State Compliance**

Based on the annual state compliance reports, the Plan Review Team determines that each state/jurisdiction implemented a management program for 2011 that was approved by the Striped Bass Management Board and was consistent with the requirements of Amendment 6. Refer to Tables 1 and 2 for state-by-state regulations.

The following regulatory changes for were documented in the compliance reports:

- Effective June 8, 2012, the NJDEP Division of Fish and Wildlife is indefinitely suspending the Party/Charter Boat facet of the Striped Bass Bonus Program. This does not impact the individual angler facet of the SBBP nor does it affect the current recreational fisheries regulations for striped bass. Recreational anglers without a SBBP permit, including those fishing on for-hire vessels, can still harvest two striped bass per day at 28 inches or larger. Party/Charter Boat anglers can still harvest a 'bonus' bass if they obtain a SBBP permit from the Division's website prior to their fishing trip and have the permit in possession while fishing on the for-hire vessel.
- Although the 2012 Maryland Chesapeake Bay quota was unchanged from 2011, 5% of the commercial quota was withheld to account for management uncertainty in harvest reporting.
- Effective January 1, 2011, all pound nets in the Potomac River must have at least six PRFC approved fish cull panels properly installed in each pound net to help release undersize fish. These fish cull panels were being used by some pound netters on a voluntary basis prior to 2011.

Following the first full year of implementation of an alternative management program approved by the Management Board, the PRT is responsible for evaluating the effects of the program. The Management Board approved a conservation equivalency proposal from New Jersey in May 2010 that would permit anglers to take 1 fish at 24 inches or greater and 1 fish at 32 inches or greater (rather than 2 fish at 28 inches or greater). The state has not implemented this proposal to date. The Management Board requested that the Technical Committee re-evaluate the conservation equivalency of the alternative measure three years post-implementation.

Amendment 6 includes compliance requirements for monitoring programs (summarized in *Section V*). Compliance with these requirements is summarized in Table 10. The PRT found that all states carried out the required monitoring programs in the 2011 fishing year.

No monitoring program changes were documented in the compliance reports or provided via personal communication.

## VIII. Recommendations

### Management Recommendations

- None

### Research Recommendations

#### STOCK ASSESSMENT AND POPULATION DYNAMICS

##### *High Priority*

- Develop method to integrate catch-at-age and tagging models to produce a single estimate of F and stock status.
- Develop a spatial and temporal catch at age model incorporating tag-based movement information.
- Develop methods for combining tag results from programs releasing fish from different areas on different dates.
- Examine potential biases associated with the number of tagged individuals, such as gear-specific mortality (associated with trawls, pound nets, gill nets, and electrofishing), tag-induced mortality, and tag loss.
- Continue improvements to statistical catch-at-age model as recommended by 46<sup>th</sup> SARC (e.g., include error from catch estimates, fit each sector of removals individually, run additional diagnostics, account for spatial differences in indices, incorporate stock-recruitment relationship).
- Review model averaging approach to estimate annual fishing mortality with tag-based models; review validity and sensitivity to year groupings.
- Evaluate to what extent rising natural mortality (M) among Chesapeake Bay stripers affects the existing F and SSB thresholds, which are based on a fixed M assumption ( $M = 0.15$ ).

##### *Medium Priority*

- Improve methods for determining population sex ratio for use in estimates of spawning stock biomass and biological reference points.
- Evaluate the overfishing definition relative to uncertainty in biological parameters.
- Develop studies to provide information on gear-specific discard mortality rates and to determine the magnitude of bycatch mortality (ongoing, G. Nelson).
- Develop refined and cost-efficient fisheries-independent coastal population index for striped bass stocks.
- Examine methods to estimate annual variation in natural mortality (ongoing, Striped Bass Tagging Subcommittee).
- Examine causes of different tag-based survival estimates among programs estimating similar segments of the population.
- Evaluate truncated matrices and covariate-based tagging models.
- Develop reliable estimates of poaching loss from striped bass fisheries.
- Develop maturity ogyve applicable to coastal migratory stock.
- Improve estimates of striped bass harvest removals in coastal areas during wave 1 and in inland waters of all jurisdictions year-round.
- Develop tag-based reference points.

### ***Low Priority***

- Develop simulation models to look at the implications of overfishing definitions relative to development of a striped bass population that will provide “quality” fishing. Quality fishing must first be defined.
- Examine issues with time saturated tagging models for the  $\geq 18$  inch length group.

## **RESEARCH AND DATA NEEDS**

### ***High Priority***

- Continue in-depth analysis of migrations, stock compositions, etc. using mark-recapture data. Continue evaluation of striped bass dietary needs and relation to health condition.
- Continue analysis to determine linkages between the mycobacteriosis outbreak in Chesapeake Bay and sex ratio of Chesapeake spawning stock, Chesapeake juvenile production, and recruitment success into coastal fisheries.
- Develop field or modeling studies to aid in estimation of natural mortality or other factors affecting the tag return rate.

### ***Medium Priority***

- Continue to conduct research to determine limiting factors affecting recruitment and possible density implications.
- Evaluate the percentage of fishermen using circle hooks.
- Conduct study to calculate the emigration rates from producer areas now that population levels are high and conduct multi-year study to determine inter-annual variation in emigration rates.
- Examine the potential public health trade-offs between the continued reliance on the use of high minimum size limits (28 inches) on coastal recreational anglers and its long-term effects on enhanced PCB contamination among recreational stakeholders.

### ***Low Priority***

- Determine inherent viability of eggs and larvae.
- Conduct additional research to determine the pathogenicity of the IPN virus isolated from striped bass to other warm water marine species, such as flounder, menhaden, shad, and largemouth bass.

### **Habitat Recommendations**

A comprehensive list of habitat research, conservation, and restoration recommendations is provided in Greene et al. (2009).

## **IX. References**

- Atlantic States Marine Fisheries Commission (ASMFC). 2011. 2011 Stock Assessment for Atlantic Striped Bass. Washington (DC): ASMFC. A report prepared by the Atlantic Striped Bass Technical Committee. 281 p.
- Greene KE, Zimmerman JL, Laney RW, Thomas-Blate JC. 2009. Atlantic coast diadromous fish habitat: A review of utilization, threats, recommendations for conservation, and research needs. Washington (DC): Atlantic States Marine Fisheries Commission. Habitat Management Series No 9. 484 p.

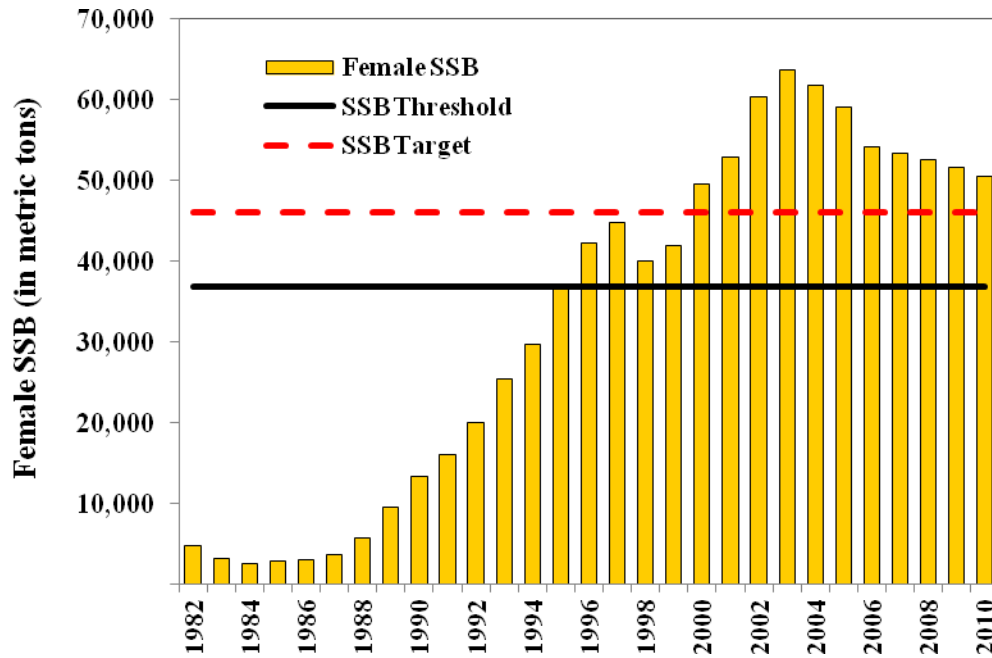
- Horne J, Durell E, Giuliano A, Barker L. 2009. Estimate of the 2009 Harvest of Spring Coastal Migrant Striped Bass in Chesapeake Bay. Annapolis (MD): Maryland Department of Natural Resources. 12 p.
- Murphy, M, Darby C, Klaer N, Tingley G. Summary Report of the 46<sup>th</sup> Northeast Regional Stock Assessment Review Committee (SARC 46). Prepared for 46<sup>th</sup> SAW, January 2, 2008. 30 p. Available from: National Marine Fisheries Service, 166 Water Street, Woods Hole, MA 02543-1026.
- Northeast Fisheries Science Center (NEFSC). 2008a. 46th Northeast Regional Stock Assessment Workshop (46th SAW) Assessment Summary Report. US Dept Commer, Northeast Fish Sci Cent Ref Doc. 08-01; 24 p. Available from: National Marine Fisheries Service, 166 Water Street, Woods Hole, MA 02543-1026.
- NEFSC. 2008b. 46th Northeast Regional Stock Assessment Workshop (46th SAW) Assessment Report. US Dept Commer, Northeast Fish Sci Cent Ref Doc. 08-03a; 252 p. Available from: National Marine Fisheries Service, 166 Water Street, Woods Hole, MA 02543-1026.
- National Oceanic and Atmospheric Administration (NOAA). 2010. 2009 Biennial Report to Congress on the Progress and Findings of Studies on Striped Bass Populations. Washington (DC): US Department of Congress, NOAA National Marine Fisheries Service. 30 p.



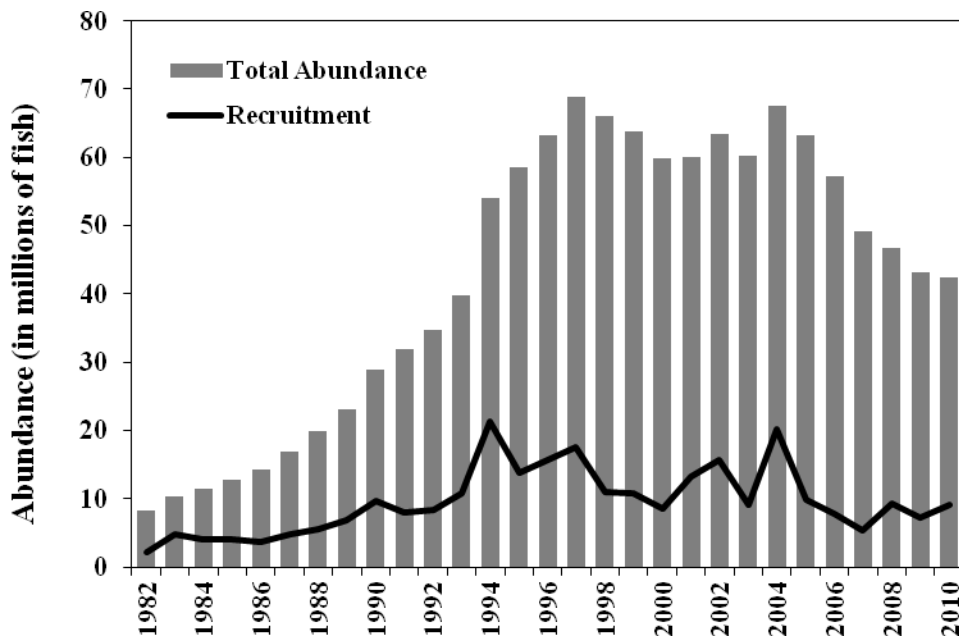
## X. Figures

**Figure 1. Striped bass spawning stock biomass (SSB) estimates and biological reference points**

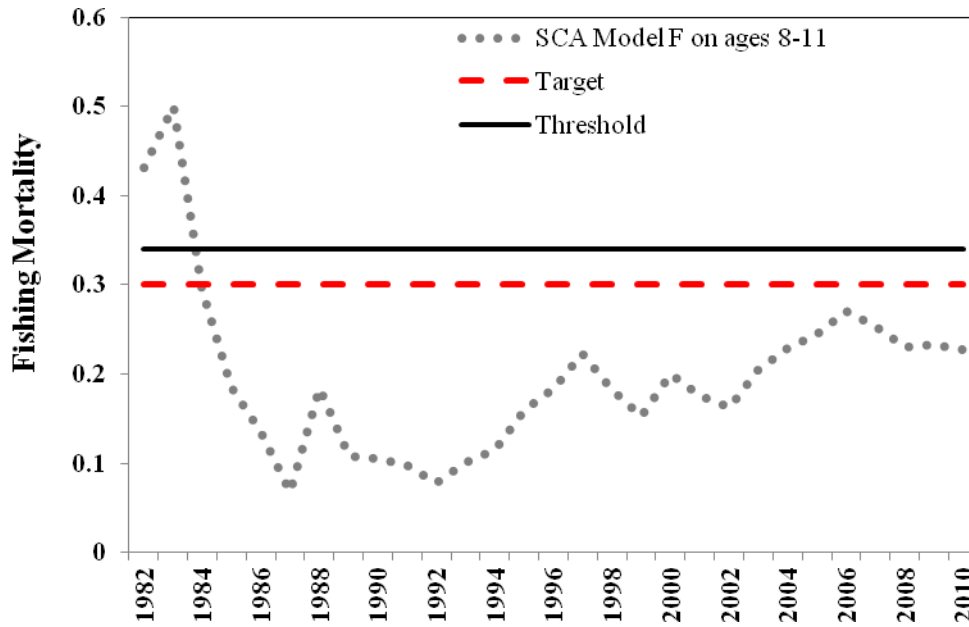
Source: ASMFC 2011



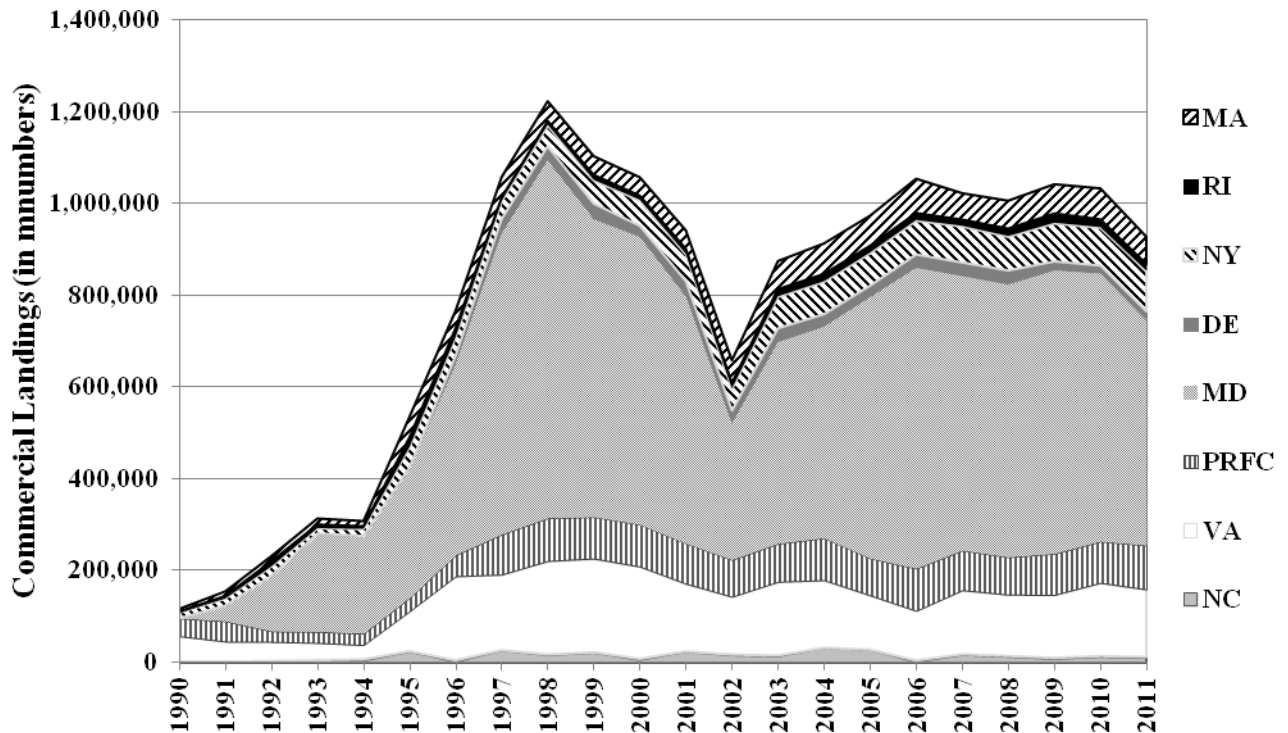
**Figure 2. Striped bass abundance and recruitment estimates.** Source: ASMFC 2011



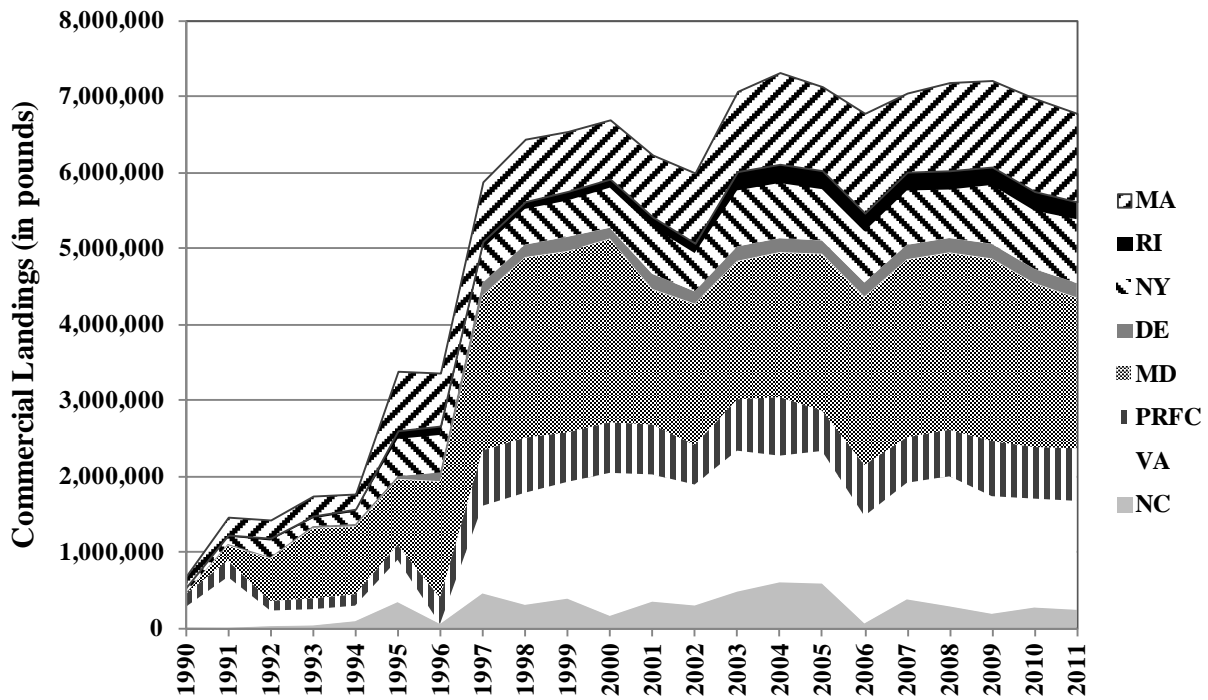
**Figure 3. Striped bass fishing mortality (F) estimates from the statistical-catch-at-age (SCA) model and biological reference points.** Source: ASMFC 2011



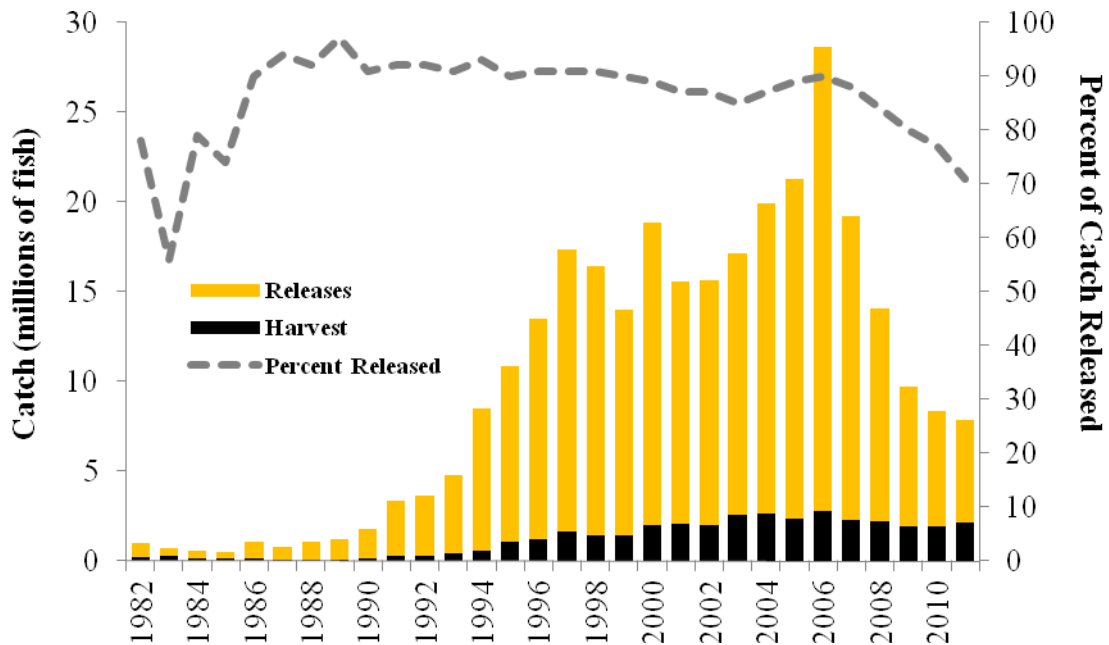
**Figure 4. Commercial landings, in numbers, of migratory striped bass, by state, 1990 – 2011.** Note: All harvests are based on the calendar year. MD and VA harvests include Chesapeake Bay harvest. NC is Atlantic Ocean only. Source: ASMFC 2012 Compliance Reports.



**Figure 5. Commercial landings, in pounds, of migratory striped bass, by state, 1990 – 2011.**  
 Note: All harvests are based on the calendar year. MD and VA harvests include Chesapeake Bay harvest. NC is Atlantic Ocean only. Source: ASMFC 2012 Compliance Reports.



**Figure 6. Recreational catch and the proportion of fish released, 1982-2011**  
 Source: personal communication with NMFS Fisheries Statistics Division, Silver Spring, MD



**Figure 5. Juvenile abundance indices from Maine, New York, Jew Jersey, Maryland, Virginia, and North Carolina.** Source: 2012 State Compliance Reports. Q1 = first quartile, which is the value that is below 75% of all values in a specified time series.

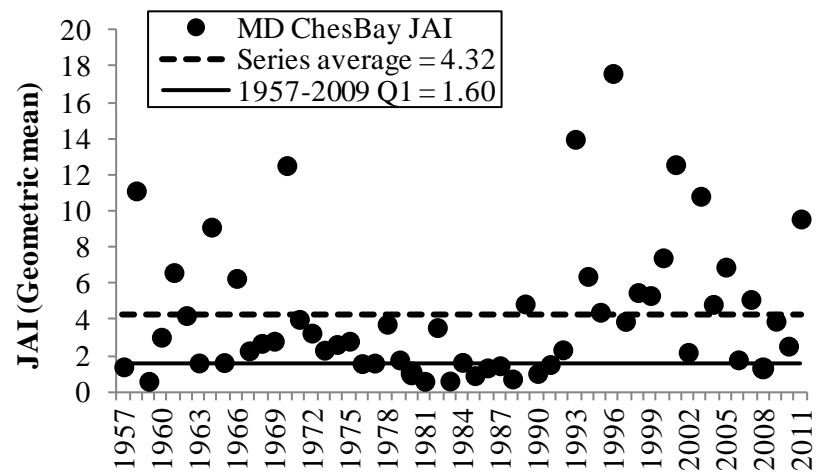
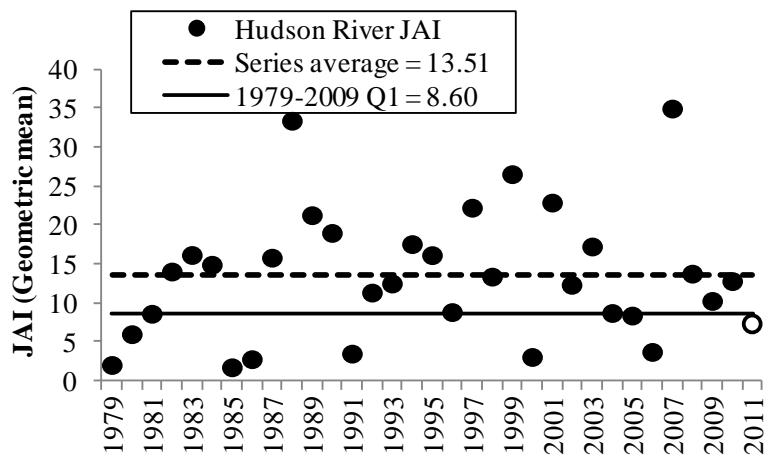
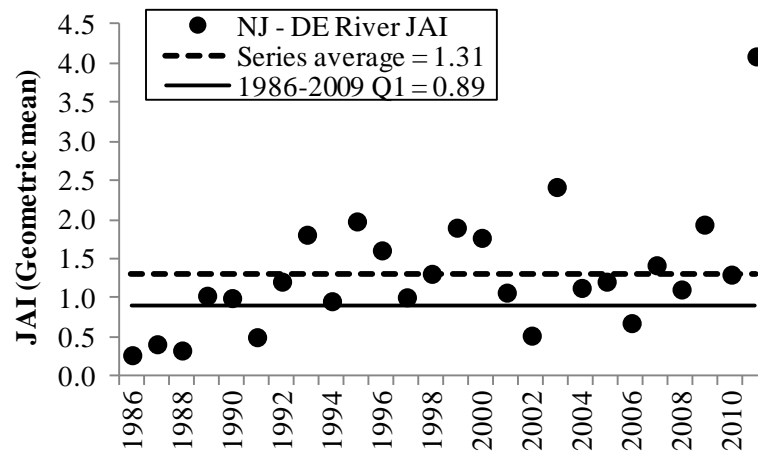
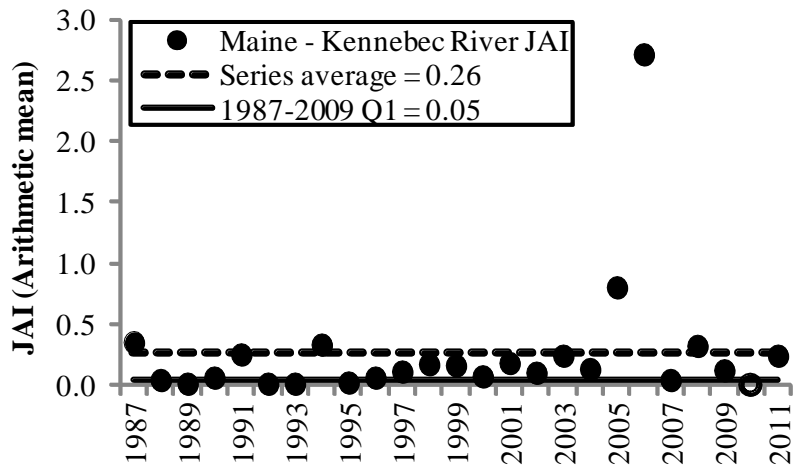
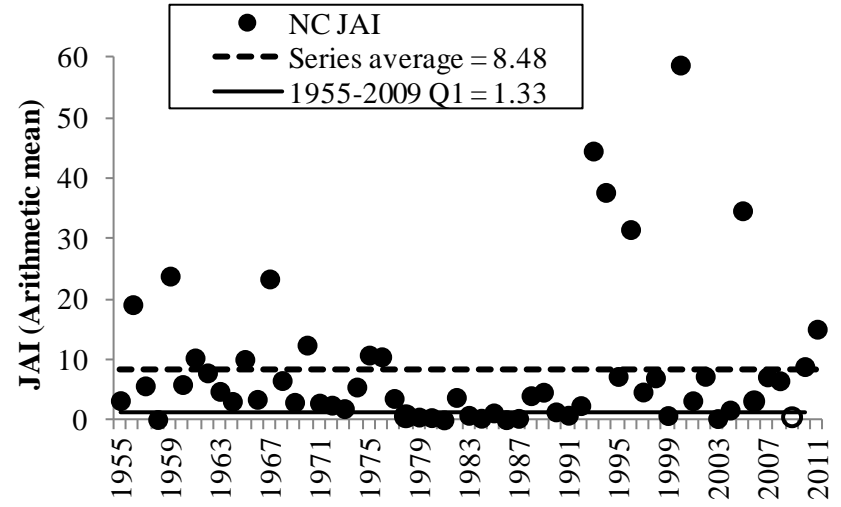
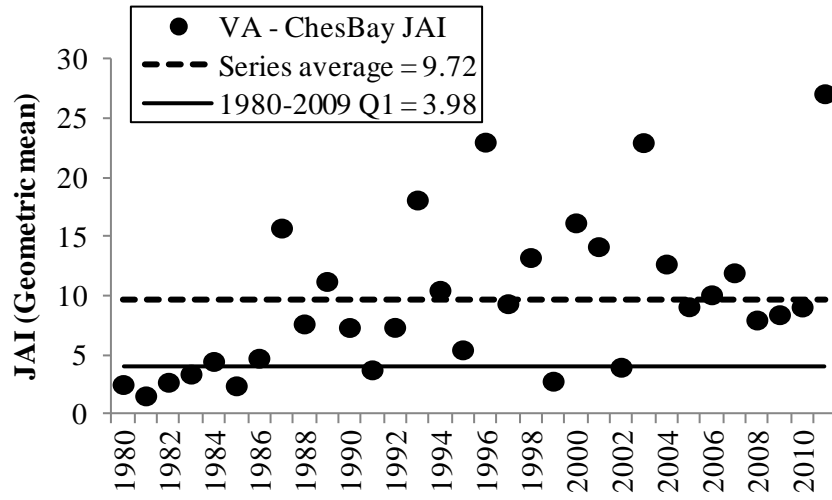


Figure 5. continued.



2010 Striped Bass FMP Review

XI. Tables

**Table 1. Summary of Atlantic Striped Bass Commercial Regulations in 2011**

STATE	SIZE LIMITS	SEASONAL QUOTA	OPEN SEASON
ME	Commercial fishing prohibited		
NH	Commercial fishing prohibited		
MA	34" min.	1,159,750 lb. (minus any overage from previous year) Hook & line only	7.12 until quota reached; 5 fish/day on Sun; 30 fish/day Tues-Thurs
RI	Floating fish trap: 26" min.  General category (mostly rod & reel): 34" min.	Total: 239,963 lb. (minus any overage from previous year) Split 39:61 between trap and general category. Gill netting prohibited.	Trap: 1.1 until quota reached; if 80% quota harvested before 8.26, a 500 lb/trap/day limit is imposed; from 8.27–12.31, 10,000 lb. quota set-aside available. General Category: 6.1-8.31 or 75% quota; 9.13-12.31 or 100% quota; 5 fish/day Sun-Thu.
CT	Commercial fishing prohibited		
NY	24–36" Ocean only (Hudson River closed to commercial harvest)	828,293 lb. (minus any overage from previous year). Pound nets, gill nets (6-8" stretched mesh), hook & line.	7.1 – 12.15 Gill nets <6 or >8", 7 fish/trip; trawls 21 fish/trip. Gill nets prohibited in Great South, South Oyster, and Hempstead Bays.
NJ	Commercial fishing prohibited		
PA	Commercial fishing prohibited		
DE	28" minimum except 20" spring gillnet in DE Bay/River & Nanticoke River (5.5" max mesh & 0.28mm max twine)	193,447 lb. (minus any overage from previous year)	Gillnet: 2.15-5.31 (3.1-31 for Nanticoke) & 11.15-12.31; drift nets only 2.15-28 & 5.1-31; no fixed nets in DE River Hook and Line: 4.1–12.31 Except 4.1-5.31 closed spawning areas
MD	Bay and Rivers: 18–36"  Ocean: 24"	Bay and River: 2,254,831 lbs (part of Baywide quota) Gear specific quotas and landing limits  Ocean: 126,396 lb. (minus any overage from previous year)	Bay Pound Net: 6.1-11.30, Mon-Sat Bay Haul Seine: 6.7-11.30, Mon-Fri Bay Hook & Line: 6.7-11.30, Mon-Thu Bay Drift Gill Net: 1.1-2.28, 12.1-12.31, Mon-Fri Ocean Drift Gill Net & Trawl: 1.1-4.30, 11.1-12.31, Mon-Fri

**2011 Striped Bass FMP Review**

(Table 1 continued – Summary of commercial regulations in 2011)

<b>STATE</b>	<b>SIZE LIMITS</b>	<b>SEASONAL QUOTA</b>	<b>OPEN SEASON</b>
PRFC	18” min all year 36” max 2.15–3.25	835,960 lbs (part of Baywide quota)	Hook & line: 2.15-3.25, 6.1-12.31 Pound Net & Other: 2.15-3.25, 6.1-12.15 Gill Net: 1.1-3.25
DC	Commercial fishing prohibited		
VA	Bay and Rivers: 18” min, 28” max & complimentary gill net mesh size limit 3.26–6.15 Ocean: 28” minimum	Bay and Rivers: 1,538,022 lbs in 2010 (part of Baywide quota)  Ocean: 184,853 lb. (minus any overage from previous year)	Bay and Rivers: 2.1-12.31  Ocean: 2.1-12.31
NC	Albemarle Sound: 18”  Ocean: 28”	Albemarle Sound: 275,000 lb Ocean: 480,480 lb. (minus any overage from previous year) split 160,160 lbs each to beach seine, gill net & trawl	Albemarle Sound: 1.1-4.30, 10.1-12.31; daily trip limit ranging from 5 to 15 fish; striped bass cannot exceed 50% by weight of total finfish harvest; season and daily trip limits set by proclamation. Ocean: gear requirements; open days and trip limits for beach seine, gill net, and trawl set via proclamation

2011 Striped Bass FMP Review

Table 2. Summary of Atlantic Striped Bass Recreational Regulations in 2011

STATE	SIZE LIMITS	BAG LIMIT	OTHER	OPEN SEASON
ME	20 – 26” OR ≥40”	1 fish	Hook & line only	All year, except spawning areas are closed 12.1 – 4.30 and catch and release only 5.1 – 6.30
NH	1 fish 28–40” & 1 fish >28”	2 fish	No netting; no gaffing; must be landed with head and tail intact; no culling	All year
MA	28” min	2 fish	Hook & line only	All year
RI	28” min	2 fish		All year
CT	28” min, except Connecticut River Bonus Program: 22-28”	2 fish, except CR Bonus: 1 fish	CR Bonus Quota: 4,025 fish	All year, except CR Bonus 5.4-6.30 (limited to I-95 bridge to MA border)
NY	Ocean Private: 1 fish 28-40” & 1 fish > 40” Ocean Charter: 28” min Hudson River: 18” min DE River: 28” min	Ocean: 2 fish  Hudson R.: 1 fish DE River: 2 fish	Angling or spearing only	Ocean: 4.15 – 12.15  Hudson River: 3.16 – 11.30 Delaware River: All year
NJ	28” min	2 fish, plus 1 additional through Bonus Program	Bonus program quota: 321,750 lb. No netting. Non-offset circle hooks required 4.1-5.31 in DE River if using natural bait.	All year except 1.1-2.28 in intra-coastal waters plus 4.1-5.31 in lower DE River
PA	Non-tidal DE River: 28” min; Delaware Estuary: 28” min. except 20-26” from 4.1-5.31	2 fish		Year round
DE	28” min. except 20-26” from 7.1-8.31 in Del. River, Bay & tributaries	2 fish	Hook & line, spear (for divers) only. Circle hooks required in spawning season.	All year except 4.1-5.31 in spawning grounds (catch & release allowed)



2011 Striped Bass FMP Review

(Table 2 continued – Summary of recreational regulations in 2011)

STATE	SIZE LIMITS	BAG LIMIT	OTHER	OPEN SEASON
MD	Susquehanna Flats (SF): 18-26”  Chesapeake Bay Trophy: 28” min Chesapeake Bay Regular: 18” min with 1 fish > 28” Ocean: 28” min	SF: 1 fish  Chesapeake Bay Trophy: 1 fish Chesapeake Bay Regular: 2 fish  Ocean: 2 fish	SF: non-off set circle hook if baited hooks & gap>0.5”  Chesapeake Bay Quota: 2,956,463 lbs (part of Baywide quota; includes Susquehanna Flats harvest, excludes trophy harvest)	SF: 3.1-5.31; catch & release only 3.1-5.3  Chesapeake Bay Trophy: 4.18-5.15 (most tribs closed) Chesapeake Bay Regular: 5.16-12.15 (most tribs closed until 6.1)  Ocean: All year
PRFC	Trophy: 28” Regular: 18” min with 1 fish > 28”	Trophy: 1 fish Regular: 2 fish	Quota: 683,967 lbs. (part of Baywide quota; excludes trophy harvest)	Trophy: 4.18 -5.15 Regular: 5.16-12.31
DC	18” min with 1 fish > 28”	2 fish	Hook & line only	5.16-12.31
VA	Bay/Coastal Trophy: 32” min (28” Potomac tribs) CB Spring: 18-28”; 1 fish >32” CB Fall: 18–28”; 1 fish >34” Potomac Tribs: 18-28”; 1 fish >28” Ocean: 28”	Bay/Coastal Trophy: 1 fish  CB Spring: 2 fish  CB Fall: 2 fish Potomac Tribs: 2 fish Ocean: 2 fish	Hook & line, rod & reel, hand line only  Chesapeake Bay Quota: 1,538,022 lbs in 2010 (part of Baywide quota; excludes trophy harvest)	Bay Trophy: 5.1-6.15 (open 4.18 Potomac tribs) Coastal Trophy: 5.1-5.15 CB Spring: 5.16-6.15 (no fish >32” in spawning areas) CB Fall: 10.4-12.31 Potomac Tribs: 5.16-12.31 Ocean: 1.1-3.31, 5.16-12.31
NC	Roanoke River: 2 fish 18- 22” OR 1 fish 18-22” and 1 fish >27” Albemarle Sound: 18” min.  Ocean: 28” min	Roanoke River: 2 fish Albemarle Sound: 3 fish Ocean: 2 fish	Roanoke River quota: 137,500 lb.  Albemarle Sound quota: 137,500 lb.	Roanoke River: 3.1 – 4.30 (single barbless hook required 3.1-6.30 from Roanoke Rapids dam downstream to US 258 bridge) Albemarle Sound: Spring 1.1 – 4.30; Fall 10.1-12.31 Ocean: All year

**2011 Striped Bass FMP Review**

**Table 3. Commercial harvest (pounds) of migratory striped bass by state, 1990-2011.**

Source: personal communication with NMFS. Note: All harvests based on the calendar year. MD and VA harvests include Chesapeake Bay. NC is Atlantic Ocean only.

<b>Year</b>	<b>ME</b>	<b>NH</b>	<b>MA</b>	<b>RI</b>	<b>CT</b>	<b>NY</b>	<b>NJ</b>	<b>DE</b>	<b>MD</b>	<b>PRFC</b>	<b>VA</b>	<b>NC</b>	<b>Total</b>
<b>1990</b>		37	148,000	4,000		81,870		6,509	2,887	169,060	267,735	9,797	689,895
<b>1991</b>			235,000	28,000		105,163		21,079	191,066	216,755	668,454	6,186	1,471,703
<b>1992</b>			239,200	39,000		226,611		17,795	552,451	127,398	204,338	27,702	1,434,495
<b>1993</b>			262,600	40,000		109,362		28,032	916,764	142,742	213,665	36,463	1,749,628
<b>1994</b>			199,600	39,810		171,279		33,897	884,970	149,891	204,124	92,605	1,776,176
<b>1995</b>			782,000	113,461		500,784		38,198	856,568	198,478	557,741	343,707	3,390,937
<b>1996</b>			696,815	122,562		504,350		117,560	1,523,293	346,834		55,771	3,367,185
<b>1997</b>			785,942	96,519		460,762		165,978	2,030,061	731,114	1,153,743	458,524	5,882,643
<b>1998</b>			822,000	94,663		484,900		163,169	2,368,393	726,179	1,476,502	308,068	6,443,874
<b>1999</b>		33	788,171	119,679		491,790		187,096	2,377,393	653,266	1,538,220	389,454	6,545,102
<b>2000</b>			779,736	111,812		542,659		140,634	2,411,554	666,001	1,883,856	162,736	6,698,988
<b>2001</b>			815,054	129,654		633,095		198,802	1,774,758	658,676	1,675,469	350,280	6,235,788
<b>2002</b>			924,870	129,172		518,573		160,560	1,852,634	521,048	1,592,910	299,508	5,999,275
<b>2003</b>			1,055,439	246,312		753,261		188,419	1,813,727	676,574	1,856,831	482,123	7,072,686
<b>2004</b>		203	1,206,305	245,204		741,668		181,974	1,899,539	772,333	1,668,307	604,824	7,320,357
<b>2005</b>			1,104,737	242,303		689,821		173,815	2,055,558	533,456	1,746,247	588,601	7,134,538
<b>2006</b>			1,312,168	238,797		688,446		185,987	2,207,350	673,508	1,413,914	63,458	6,783,628
<b>2007</b>			1,040,328	240,627		729,743		188,668	2,336,886	599,261	1,534,799	380,380	7,050,692
<b>2008</b>			1,160,122	245,988		653,100		188,719	2,326,023	611,789	1,714,564	288,410	7,188,715
<b>2009</b>			1,138,291	234,368		789,891		192,311	2,394,620	727,197	1,549,145	189,995	7,215,818
<b>2010</b>			1,224,356	249,520		782,402		185,410	2,150,577	680,496	1,434,219	272,632	6,979,612
<b>2011</b>			1,163,865	228,163		854,731		188,620	1,976,473	694,151	1,434,636	242,600	6,783,239

2011 Striped Bass FMP Review

**Table 4. Commercial harvest (numbers) of migratory striped bass by state, 1990-2011.**

Source: personal communication with NMFS. Note: All harvests based on the calendar year. MD and VA harvests include Chesapeake Bay. NC is Atlantic Ocean only.

Year	ME	NH	MA	RI	CT	NY	NJ	DE	MD	PRFC	VA	NC	Total	<i>Dead Discards</i>
1990			5,927	784		11,784		698	534	38,884	56,222	803	115,636	510,011
1991			9,901	3,596		15,426		3,091	31,880	44,521	44,970	413	153,798	327,167
1992			11,532	9,095		20,150		2,703	119,286	23,291	42,912	1,745	230,714	186,601
1993			13,099	6,294		11,181		4,273	211,089	24,451	39,059	3,414	312,860	347,839
1994			11,066	4,512		15,212		4,886	208,914	25,196	32,382	5,275	307,443	359,518
1995			44,965	19,722		43,704		5,565	280,051	29,308	88,274	23,325	534,914	515,454
1996			38,354	18,570		39,707		20,660	415,272	46,309	184,495	3,151	766,518	394,824
1997			44,841	7,061		37,852		33,223	656,416	87,643	165,583	25,562	1,058,181	216,743
1998			43,315	8,835		45,149		31,386	780,893	93,299	204,911	16,040	1,223,828	326,031
1999			40,838	11,559		49,795		34,841	650,022	90,575	205,143	21,010	1,103,783	236,620
2000			40,256	9,418		54,894		25,188	627,777	91,471	202,227	6,480	1,057,711	666,996
2001			40,248	10,917		58,296		34,373	538,808	87,809	148,346	22,936	941,733	310,900
2002			48,926	11,653		47,142		30,440	296,635	80,300	127,211	15,784	658,091	168,201
2003			61,262	15,497		68,354		31,530	439,482	83,090	161,778	13,823	874,816	262,078
2004			66,555	16,040		70,367		28,406	461,064	91,980	147,998	31,014	913,424	518,847
2005			65,703	14,949		70,560		26,336	569,964	80,615	119,244	26,572	973,943	776,951
2006			75,063	15,429		73,528		30,212	655,951	92,288	109,395	2,798	1,054,664	216,753
2007			57,634	13,934		78,287		30,717	598,495	86,695	140,602	16,621	1,022,985	726,700
2008			61,075	16,616		73,263		31,866	594,655	81,720	134,603	12,903	1,006,701	395,400
2009			63,876	20,725		82,574		20,696	618,076	89,693	138,303	8,675	1,042,619	558,255
2010			67,802	17,256		81,896		18,562	584,554	90,258	160,595	12,670	1,033,592	242,962
2011			59,792	14,343		87,349		20,517	490,969	96,126	148,063	10,701	1,054,529	<i>Not Available</i>

**2011 Striped Bass FMP Review**

**Table 5. Recreational harvest (pounds) of migratory striped bass by state, 1990-2011**

Source: personal communication with NMFS. Note: All harvests based on the calendar year. Estimates are for March to December, except for North Carolina. Maryland and Virginia harvests include Chesapeake Bay. North Carolina is Atlantic Ocean only.

<b>Year</b>	<b>ME</b>	<b>NH</b>	<b>MA</b>	<b>RI</b>	<b>CT</b>	<b>NY</b>	<b>NJ</b>	<b>DE</b>	<b>MD</b>	<b>VA</b>	<b>NC</b>	<b>Total</b>
<b>1990</b>	60,483	11,363	319,092	73,349	193,011	505,440	588,974	18,115	12,967	443,751		2,226,545
<b>1991</b>	58,177	6,731	440,605	496,723	125,309	1,053,589	643,571	25,501	456,954	333,743	3,882	3,644,785
<b>1992</b>	107,693	44,612	972,116	203,108	196,278	921,201	746,343	25,677	613,174	187,852	16,197	4,034,251
<b>1993</b>	11,953	28,115	1,113,446	292,429	400,067	1,575,938	874,296	52,540	794,853	505,742	3,029	5,652,408
<b>1994</b>	66,451	66,017	1,686,049	109,818	355,829	1,974,759	438,080	63,832	1,096,409	870,140	71,195	6,798,579
<b>1995</b>	45,933	67,992	1,504,390	436,061	671,647	3,296,025	3,141,222	175,347	2,057,450	955,822	158,096	12,509,985
<b>1996</b>	44,802	102,271	1,291,706	950,978	915,418	4,809,381	1,736,508	281,481	1,560,389	1,340,414	199,675	13,233,023
<b>1997</b>	185,178	206,904	2,891,970	927,921	920,465	4,449,564	821,784	232,186	1,962,947	2,813,471	607,978	16,020,368
<b>1998</b>	178,584	114,342	2,973,456	671,847	989,923	2,318,291	1,333,329	236,926	1,908,344	1,581,560	415,585	12,722,187
<b>1999</b>	98,623	84,255	1,822,818	886,668	824,031	3,171,344	3,342,372	100,541	1,137,940	1,741,857	556,922	13,767,371
<b>2000</b>	269,325	71,370	2,618,216	1,160,305	515,962	4,050,569	4,286,040	369,030	2,100,854	2,005,721	187,276	17,634,668
<b>2001</b>	290,233	223,072	3,644,561	1,138,978	628,044	2,996,805	5,341,867	382,498	2,072,943	2,140,713	608,617	19,468,331
<b>2002</b>	383,270	152,342	4,304,883	1,192,296	600,482	2,813,596	4,133,678	266,920	1,423,515	2,648,115	602,586	18,521,683
<b>2003</b>	253,910	281,549	4,889,036	1,502,455	1,251,538	3,409,573	4,258,557	292,167	2,808,923	2,789,745	848,416	22,585,869
<b>2004</b>	171,741	121,566	5,466,059	1,169,587	921,737	2,388,825	5,458,534	311,025	2,333,042	3,101,870	5,574,787	27,018,773
<b>2005</b>	322,996	291,662	5,093,748	1,590,072	1,643,946	3,936,227	3,793,471	254,018	3,533,652	2,655,119	2,195,043	25,309,954
<b>2006</b>	385,598	212,012	4,907,270	873,965	1,388,296	4,820,089	6,623,538	206,432	3,541,582	4,133,292	2,153,231	29,245,305
<b>2007</b>	316,331	73,283	4,784,948	1,407,549	1,718,924	5,767,505	2,441,469	112,071	3,178,237	1,729,112	1,048,581	22,578,010
<b>2008</b>	238,452	92,179	5,516,183	732,564	1,799,097	7,009,424	4,743,038	209,995	2,637,998	1,767,646	938,703	25,685,279
<b>2009</b>	288,741	146,004	4,525,166	1,093,321	877,614	4,380,891	3,807,088	313,296	4,558,773	1,259,314	209,856	21,460,064
<b>2010</b>	109,531	53,962	4,062,205	1,037,147	1,050,820	6,480,208	4,693,882	193,723	2,552,257	389,775	714,145	21,337,655
<b>2011</b>	91,705	269,921	3,504,522	1,257,302	758,216	8,969,762	5,382,744	241,149	2,640,309	1,160,914	2,042,981	26,319,525

**2011 Striped Bass FMP Review**

**Table 6. Recreational harvest (numbers) of migratory striped bass by state, 1982- 2009**

Source: personal communication with NMFS. Note: All harvests based on the calendar year. Estimates are for March to December except for North Carolina. Maryland and Virginia harvests include Chesapeake Bay. North Carolina is Atlantic Ocean only. Values for North Carolina (1996-2003) and Virginia (1996-2008) include Technical Committee estimates of wave 1 harvest.

<b>Year</b>	<b>ME</b>	<b>NH</b>	<b>MA</b>	<b>RI</b>	<b>CT</b>	<b>NY</b>	<b>NJ</b>	<b>DE</b>	<b>MD</b>	<b>VA</b>	<b>NC</b>	<b>Total</b>
<b>1990</b>	2,912	617	20,515	4,677	6,082	24,799	44,878	2,009	736	56,017		163,242
<b>1991</b>	3,265	274	20,799	17,193	4,907	54,502	38,300	2,741	77,873	42,224	391	262,469
<b>1992</b>	6,357	2,213	57,084	14,945	9,154	45,162	41,426	2,400	99,354	21,118	967	300,180
<b>1993</b>	612	1,540	58,511	17,826	19,253	78,560	64,935	4,055	104,682	78,481	264	428,719
<b>1994</b>	3,771	3,023	74,538	5,915	16,929	87,225	34,877	4,140	199,378	127,945	7,426	565,167
<b>1995</b>	2,189	3,902	73,806	29,997	38,261	155,821	254,055	15,361	355,237	149,103	11,450	1,089,182
<b>1996</b>	1,893	6,461	68,300	60,074	62,840	225,428	127,952	22,867	337,415	250,731	35,996	1,199,957
<b>1997</b>	35,259	13,546	199,373	62,162	64,639	236,902	67,800	19,706	334,068	518,483	96,189	1,648,127
<b>1998</b>	38,094	5,929	207,952	44,890	64,215	166,868	88,973	18,758	391,824	383,786	45,768	1,457,057
<b>1999</b>	21,102	4,641	126,755	56,320	55,805	195,261	237,010	8,772	263,191	411,873	65,658	1,446,388
<b>2000</b>	62,186	4,262	181,295	95,496	53,191	270,798	402,302	39,543	506,462	389,126	20,452	2,025,113
<b>2001</b>	59,947	15,291	288,032	80,125	54,165	189,714	560,208	41,195	382,557	355,020	58,876	2,085,130
<b>2002</b>	71,907	12,857	308,749	78,190	51,060	202,075	416,455	29,149	282,429	411,248	109,052	1,973,171
<b>2003</b>	57,765	24,878	407,100	115,471	95,983	313,761	391,842	29,522	525,191	455,812	127,727	2,545,052
<b>2004</b>	36,886	10,359	400,252	84,814	75,244	242,623	448,524	25,178	380,461	633,018	278,270	2,615,629
<b>2005</b>	68,638	26,026	368,422	112,918	114,965	298,387	327,016	19,955	490,275	403,792	104,997	2,335,391
<b>2006</b>	72,827	14,748	339,994	73,650	83,390	313,464	489,319	19,076	648,644	607,344	90,753	2,753,209
<b>2007</b>	71,443	7,070	347,102	102,112	109,856	370,722	206,275	10,095	679,024	366,964	45,502	2,316,165
<b>2008</b>	49,172	6,642	343,347	56,056	112,972	448,271	318,115	16,994	442,280	396,950	44,890	2,235,689
<b>2009</b>	52,997	10,761	336,470	75,051	72,901	329,402	269,162	21,762	530,395	213,406	7,375	1,919,682
<b>2010</b>	18,749	5,089	354,157	79,450	87,557	501,728	314,698	14,838	469,161	71,175	39,971	1,956,573
<b>2011</b>	18,105	23,976	255,507	88,635	63,288	674,844	320,413	18,023	445,170	122,241	94,182	2,124,384

2011 Striped Bass FMP Review

**Table 7. Recreational releases (numbers) of migratory striped bass by state, 1982-2009, and annual dead discard estimates**

Source: personal communication with NMFS. Note: All harvests based on the calendar year. MD and VA harvests include Chesapeake Bay. NC is Atlantic Ocean only.

Year	ME	NH	MA	RI	CT	NY	NJ	DE	MD	VA	NC	Total	Dead Discards <sup>^</sup>
1990	12,542	15,518	339,511	67,509	89,490	265,099	254,384	14,411	420,084	175,046		1,653,594	148,823
1991	67,490	6,559	448,735	30,975	301,476	756,663	166,198	38,334	1,036,011	208,350	256	3,061,047	275,494
1992	31,177	27,613	779,814	120,410	292,259	799,149	413,506	36,932	749,959	115,899	679	3,367,397	303,066
1993	373,064	14,979	833,566	100,993	271,318	694,107	308,253	89,543	1,556,848	100,374	1,524	4,344,569	391,011
1994	363,703	43,501	2,102,514	138,989	489,967	1,132,707	568,047	103,992	2,785,392	197,022	5,005	7,930,839	713,776
1995	505,758	285,486	3,280,882	356,324	507,124	1,209,585	694,889	115,363	2,401,277	370,949	16,225	9,743,862	876,948
1996	1,626,705	292,820	3,269,746	314,336	1,051,612	1,436,091	776,165	99,372	2,545,238	759,916	116,667	12,288,668	1,105,980
1997	1,417,976	279,298	5,417,751	606,746	722,708	1,018,892	736,734	130,073	4,019,987	1,232,323	135,853	15,718,341	1,414,651
1998	691,378	243,301	7,184,358	613,421	1,026,192	884,626	488,319	185,016	2,641,680	796,372	173,704	14,928,367	1,343,553
1999	649,816	145,730	4,576,208	360,121	704,025	1,228,628	1,152,682	105,696	2,387,615	940,755	263,445	12,514,721	1,126,325
2000	942,593	209,606	7,382,031	541,516	926,367	1,373,069	885,289	151,838	3,244,731	1,022,040	129,729	16,808,809	1,512,793
2001	870,522	164,336	5,410,899	377,474	1,107,707	824,278	965,650	162,677	2,890,054	620,947	49,953	13,444,497	1,210,005
2002	1,392,200	238,003	5,718,984	530,402	696,976	588,155	715,099	114,650	2,928,589	706,729	63,269	13,693,056	1,232,375
2003	846,708	260,167	4,361,710	448,707	843,037	1,083,808	925,885	169,012	4,652,800	970,554	48,945	14,611,333	1,315,020
2004	748,388	196,806	5,891,661	669,975	1,079,304	1,492,703	1,323,535	151,179	3,738,523	1,767,596	230,356	17,290,026	1,556,102
2005	3,024,291	512,771	4,839,752	741,022	1,713,541	1,348,377	1,197,440	224,841	3,753,328	1,484,540	109,535	18,949,438	1,705,449
2006	4,062,579	567,892	8,657,473	1,356,245	1,682,372	1,578,167	2,101,816	245,682	3,895,798	1,689,642	37,713	25,875,379	2,328,784
2007	1,105,347	288,985	5,772,100	740,941	1,831,899	1,456,055	1,494,572	251,074	2,998,085	913,849	16,195	16,869,102	1,518,219
2008	470,237	83,533	3,641,258	435,629	2,372,205	1,277,102	1,452,248	260,733	1,405,613	442,048	14,002	11,854,608	1,066,915
2009	247,157	65,587	2,490,380	358,484	1,281,439	922,277	719,181	152,557	1,218,342	355,140	3,666	7,814,210	703,279
2010	191,442	44,424	1,922,058	211,940	777,433	1,097,322	506,745	78,767	1,445,550	123,022	21,097	6,419,800	577,782
2011	142,505	81,800	973,192	214,302	612,367	1,506,080	690,340	110,084	1,124,289	178,988	110,150	5,744,097	516,969

<sup>^</sup> Dead discards are estimated by multiplying the number of released fish by a mortality rate of 9%.

2010 Striped Bass FMP Review

**Table 8. Coastal commercial quotas and harvests (in pounds).**

	<b>Amendment 6 Allocation</b>	<b>2011 Quota</b>	<b>2011 Harvest</b>	<b>Overage</b>	<b>2012 Quota</b>
<b>MA</b>	1,159,750	1,073,134	1,163,865	90,731	1,069,019
<b>RI*</b>	243,625	232,974	228,163		239,963
<b>NY^</b>	1,061,060	828,293	854,731	26,438	801,855
<b>NJ+</b>	321,750	321,750	16,332		321,750
<b>DE</b>	193,447	193,447	188,620		193,447
<b>MD^</b>	131,560	126,396	21,401		126,396
<b>VA</b>	184,853	184,853	158,811		184,853
<b>NC~</b>	480,480	480,480	242,600		480,480

^ Beginning in 2003, NY and MD quotas reduced due to conservation equivalency; MA and RI quotas reduced in 2003 due to quota overages in previous year.

\* Beginning in 2007, RI quota reduced due to conservation equivalency.

+ NJ quota applied to recreational bonus fish program

~ NC harvests and quotas are for the December 1 to November 30 fishing year

**Table 9. Chesapeake Bay Quotas and Harvests (pounds), 2011**

<b>2011</b>	<b>Jurisdiction</b>	<b>Quota</b>	<b>Harvest</b>
<b>Commercial Fisheries</b>	Maryland	1,963,873	1,955,072
	PRFC	739,097	694,151
	Virginia	1,430,361	1,275,825
	<b>Subtotal</b>	<b>4,188,961</b>	<b>3,925,048</b>
<b>Recreational Fisheries</b>	Maryland	2,657,102	2,044,028
	PRFC	604,716	*
	Virginia	1,430,361	870,625
	<b>Subtotal</b>	<b>4,737,695</b>	<b>2,914,653</b>
<b>Chesapeake Bay Total</b>		<b>8,825,510</b>	<b>6,839,701</b>

Notes: Recreational harvest in the Potomac River is included in Maryland and Virginia harvest estimates. Estimates of recreational harvest in Maryland do not include migratory fish harvested in the spring season. These fish are not counted against Maryland's portion of the Chesapeake Bay recreational quota. The 2011 migratory harvest is estimated at 35,182 fish and 593,691 pounds. The PRFC recreational quota includes the charter boat quota of 67,191 pounds.

2010 Striped Bass FMP Review

**Table 10. Status of compliance with monitoring and reporting requirements, 2010**

(JAI = juvenile abundance index survey, SSB = spawning stock biomass survey, tag = participation in coastwide tagging program, Y = compliance standards met, N = compliance standards not met, na = not applicable)

Jurisdiction	Fishery-independent monitoring		Fishery-dependent monitoring		Annual reporting
	Requirement(s)	Status	Requirement(s)	Status	Status
ME	JAI	Y	x	na	Y
NH	x	na	x	na	Y
MA	tag	Y	composition, catch & effort (C&R)	Y	Y
RI	x	na	composition (C&R), catch & effort (R)	Y	Y
CT	x	na	composition, catch & effort (R)	Y	Y
NY	JAI, SSB, tag	Y	composition, catch & effort (C&R)	Y	Y
NJ	JAI, tag	Y	composition, catch & effort (R)	Y	Y
PA	SSB	Y	x	na	Y
DE	SSB, tag	Y	composition, catch & effort (C)	Y	N
MD	JAI, SSB, tag	Y	composition, catch & effort (C&R)	Y	Y
PRFC	x	na	composition, catch & effort (C&R)	Y	Y
DC	x	na	x	na	Y
VA	JAI, SSB, tag	Y	composition, catch & effort (C&R)	Y	Y
NC	JAI, SSB, tag	Y	composition (C)	Y	Y